

DO NOT
SCALE FROM
THIS PRINT

TABLE 2		
POS	"A"	"B"
-030	.839 [21.31]	.793 [20.13]
-060	1.627 [41.31]	1.580 [40.13]
-090	2.417 [61.38]	2.368 [60.13]
-120	3.204 [81.38]	3.155 [80.14]
-150	3.991 [101.37]	3.943 [100.14]

TABLE 1	
No OF POS	COPLANARITY INCLUDING GROUND PLANE
-030 THRU -060	.004 [0.10]
-090 THRU -150	.006 [0.15]

QSH-XXX-01-X-D-XXX

No OF POSITIONS

-030, -060, -090,
*-120, *-150 (PER ROW)
(* = SEE NOTE 11)

LEAD STYLE

-01: .1280[3.25]

PLATING SPECIFICATION

(SEE NOTES 8, 10 & 12)

-S: 30µ" SELECTIVE GOLD IN CONTACT AREA,
MATTE TIN ON TAIL
(USE C126-21-S/T-1G2-01-L)
-F: 3µ" FLASH SELECTIVE IN CONTACT AREA,
MATTE TIN ON TAIL
(USE C126-21-F/T-1G2-01-F)
(SEE NOTE 8)
-L: 10µ" LIGHT SELECTIVE GOLD IN CONTACT
AREA, MATTE TIN ON TAIL
(USE C126-21-L/T-1G2-01-L)
-H: 30µ" HEAVY GOLD IN CONTACT AREA,
3µ" GOLD ON TAIL
(USE C126-21-H/T-1G2-01-G)
-C: 50µ" ELECTRO-POLISHED SELECTIVE GOLD
IN CONTACT AREA, MATTE TIN ON TAIL
(USE C126-21-C/T-1G2-01-L)

OPTION

-A: ALIGNMENT PINS
(USE QSH-30-01-D-XX-A)
(NOT AVAILABLE WITH -LC)
-LC: LOCKING CLIPS
(USE LC-08-TM-01, SEE FIG 2, SHT 2)
(NOT AVAILABLE WITH -A)
(SEE NOTE 13)
-GP: GUIDE POSTS
(USE QSH-30-01-D-XX-X-GP)
(SEE FIG 4, SHT 3)
(TAPE & REEL FOR -GP, -060 POS MAX)
-K: POLYIMIDE FILM PAD
(USE K-DOT-325-450-005, SEE FIG 3, SHT 2)
-TR: TAPE & REEL (-090 POS MAX)
-FL: FRICTION LOCKS
(SEE FIG 5, SHT 3)
(NOT AVAILABLE WITH -GP)
-RT1: RETENTION (MUST USE -A OPTION)
(USE QSH-30-01-D-XX-A-RT1
& SUB-SC-05-01-F, SEE FIG 6, SHT 4)
(NOT AVAILABLE WITH -LC, -GP, OR -FL)
(NOT AVAILABLE WITH -120 & -150 POS)
-L: LATCHING
(USE QSH-30-01-D-XX-A-L, SEE FIG 7, SHT 4)
(NOT AVAILABLE WITH -LC, -GP, -FL, OR -RT1)
(NOT AVAILABLE WITH -090, -120, & -150 POS)

ROW SPECIFICATION

-D: DOUBLE (USE QSH-30-01-D-XX)

No OF BANKS

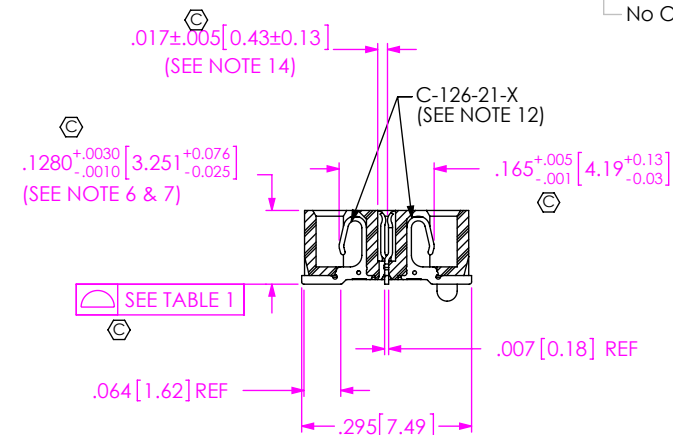
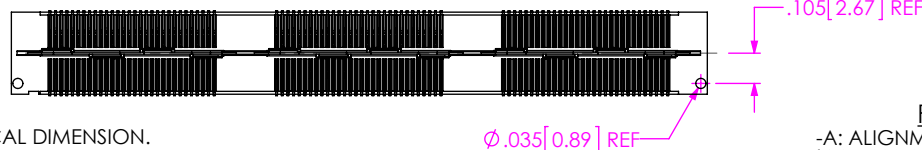
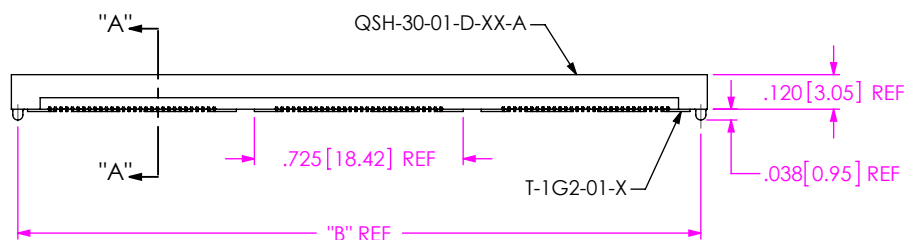
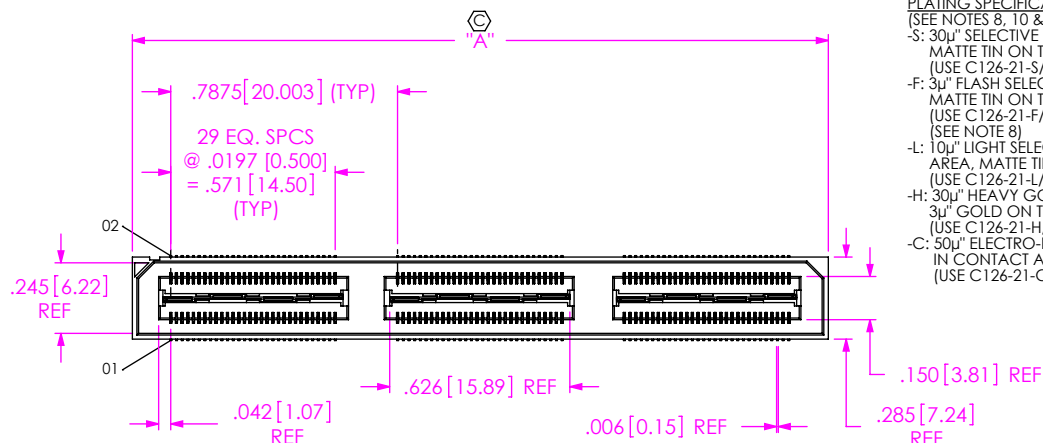
SECTION "A"- "A"
SCALE 3:1

FIG 1

-A: ALIGNMENT PIN OPTION
(QSH-090-01-X-D-A SHOWN)

NOTES:

1. (C) REPRESENTS A CRITICAL DIMENSION.
2. NOTE DELETED.
3. CONTACT RETENTION: 8 OZ. MINIMUM.
4. GROUND PLANE RETENTION: 8 OZ. MINIMUM.
5. BURR ALLOWANCE: .0015[0.038] MAX.
6. MAX VARIANCE: .002[0.05].
7. DIMENSION APPLIES TO CONTACT & GROUND PLANE.
8. -L PLATING CAN BE SUBSTITUTED FOR -F PLATING.
9. SUB-SC-05-01-XX RETENTION TO BE 1.0 LBF IN BODY.
10. MAY SUB C-126-01 FOR C-126-21.
11. FOR NEW APPLICATIONS REQUIRING THESE POSITIONS, PLEASE CONTACT SAMTEC INTERCONNECT PROCESSING GROUP.
12. FOR -120, -150 POSITIONS USE C-269-11-X. DO NOT SUB C-126.
13. DUE TO THE HIGH AMOUNT OF INSERTION FORCE NEEDED, THE -LC OPTION IS NOT COMPATIBLE WITH AUTO PLACEMENT. SAMTEC RECOMMENDS MANUAL PLACEMENT FOR ALL ASSEMBLIES WITH THE -LC OPTION.
14. CHECK ONCE PER BANK ALTERNATING SIDES FOR MULTIPLE BANK PARTS.

UNLESS OTHERWISE SPECIFIED,
DIMENSIONS ARE IN INCHES.

TOLERANCES ARE:

DECIMALS

ANGLES

.XX: ±.01[.3]

2°

.XXX: ±.005[.13]

.XXXX: ±.0020[.051]

PROPRIETARY NOTE

THIS DOCUMENT CONTAINS CONFIDENTIAL AND
PROPRIETARY INFORMATION AND ALL DESIGN,
MANUFACTURING, REPRODUCTION, USE, PATENT RIGHTS
AND SALES RIGHTS ARE EXPRESSLY RESERVED BY SAMTEC,
INC. THIS DOCUMENT SHALL NOT BE DISCLOSED, IN WHOLE
OR PART, TO ANY UNAUTHORIZED PERSON OR ENTITY NOR
REPRODUCED, TRANSFERRED OR INCORPORATED IN ANY
OTHER PROJECT IN ANY MANNER WITHOUT THE EXPRESS
WRITTEN CONSENT OF SAMTEC, INC.

MATERIAL:

DO NOT SCALE DRAWING

SHEET SCALE: 3:2

INSULATOR: LCP UL94V-0, COLOR: BLACK
CONTACT & GROUND PLANE: PHOS BRONZE

DESCRIPTION:

.5mm DOUBLE ROW HS SOCKET ASSEMBLY

DWG. NO.

QSH-XXX-01-X-D-XXX

BY: DEAN P

05/21/1999

SHEET 1 OF 4

F:\DWG\MISC\MKTG\QSH-XXX-01-X-D-XXX-MKT.SLDDRW

520 PARK EAST BLVD, NEW ALBANY, IN 47150
PHONE: 812-944-6733 FAX: 812-948-5047
e-Mail: info@SAMTEC.com code 55322

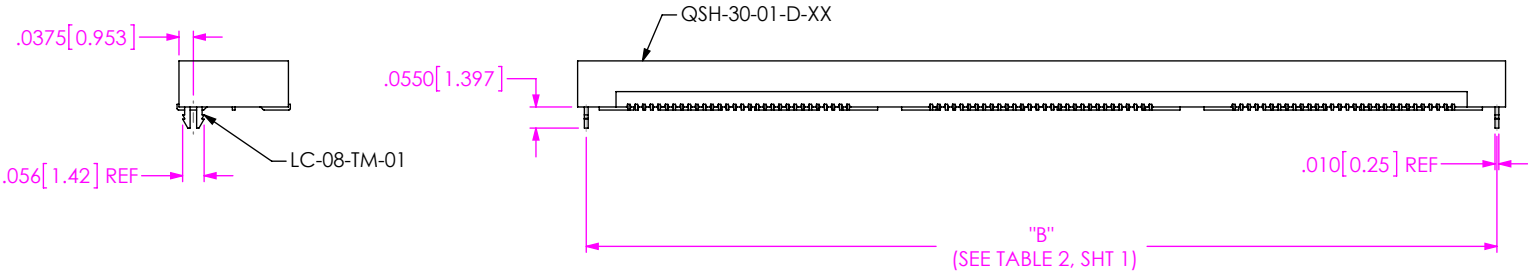


FIG 2
-LC: LOCKING CLIP OPTION
(QSH-090-01-X-D-LC SHOWN)
(SAME AS FIG 1, EXCEPT AS SHOWN)

TABLE 3								
No OF POS	"R"				"S"			
	-LC, -A, -FL	-GP	-RT1	-L	-LC, -A, -FL	-GP	-RT1	-L
-030	.839 [21.31]	1.216 [30.89]	1.438 [36.51]	1.048 [26.61]	.257 [6.53]	.446 [11.32]	.556 [14.13]	.361 [9.18]
-060	1.627 [41.31]	2.004 [50.89]	2.225 [56.52]	1.835 [46.61]	.651 [16.53]	.839 [21.32]	.950 [24.13]	.755 [19.18]
-090	2.417 [61.38]	2.791 [70.89]	3.013 [76.52]	2.623 [66.61]	1.046 [26.56]	1.233 [31.32]	1.344 [34.13]	1.149 [29.18]
-120	3.204 [81.38]	3.579 [90.89]	N/A	N/A	1.440 [36.56]	1.627 [41.32]	N/A	N/A
-150	3.991 [101.37]	4.366 [110.90]	N/A	N/A	1.833 [46.56]	2.021 [51.32]	N/A	N/A

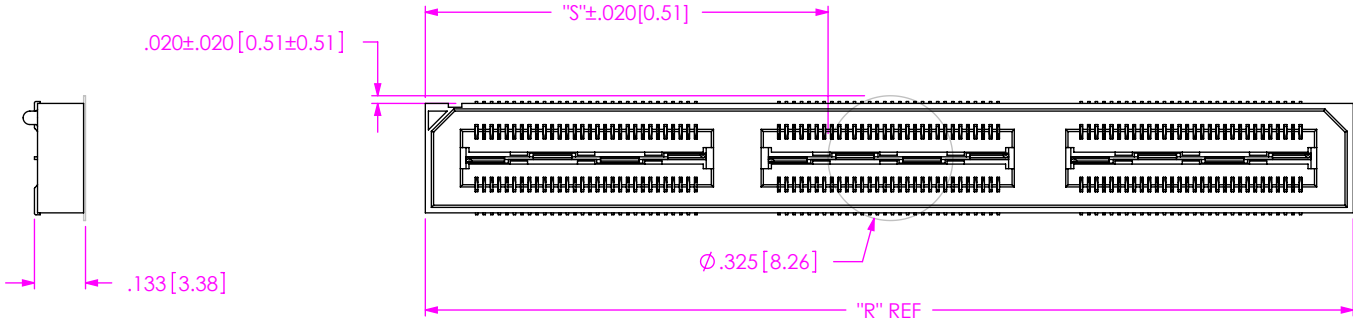


FIG 3
-K: POLYIMIDE FILM PAD
(USE K-DOT-.325-.450-.005)

<p>• PROPRIETARY NOTE •</p> <p>THIS DOCUMENT CONTAINS CONFIDENTIAL AND PROPRIETARY INFORMATION AND ALL DESIGN, MANUFACTURING, REPRODUCTION, USE, PATENT RIGHTS AND SALES RIGHTS ARE EXPRESSLY RESERVED BY SAMTEC, INC. THIS DOCUMENT SHALL NOT BE DISCLOSED, IN WHOLE OR PART, TO ANY UNAUTHORIZED PERSON OR ENTITY NOR REPRODUCED, TRANSFERRED OR INCORPORATED IN ANY OTHER PROJECT IN ANY MANNER WITHOUT THE EXPRESS WRITTEN CONSENT OF SAMTEC, INC.</p>	
DO NOT SCALE DRAWING	DESCRIPTION: .5mm DOUBLE ROW HS SOCKET ASSEMBLY
SHEET SCALE: 2:1	DWG. NO. QSH-XXX-01-X-D-XXX
	BY: DEAN P 05/21/1999 SHEET 2 OF 4

TABLE 4		
POS	"C"	"D"
-030	1.216 [30.89]	1.013 [25.73]
-060	2.004 [50.89]	1.801 [45.73]
-090	2.791 [70.89]	2.588 [65.74]
-120	3.579 [90.89]	3.376 [85.74]
-150	4.366 [110.90]	4.163 [105.74]

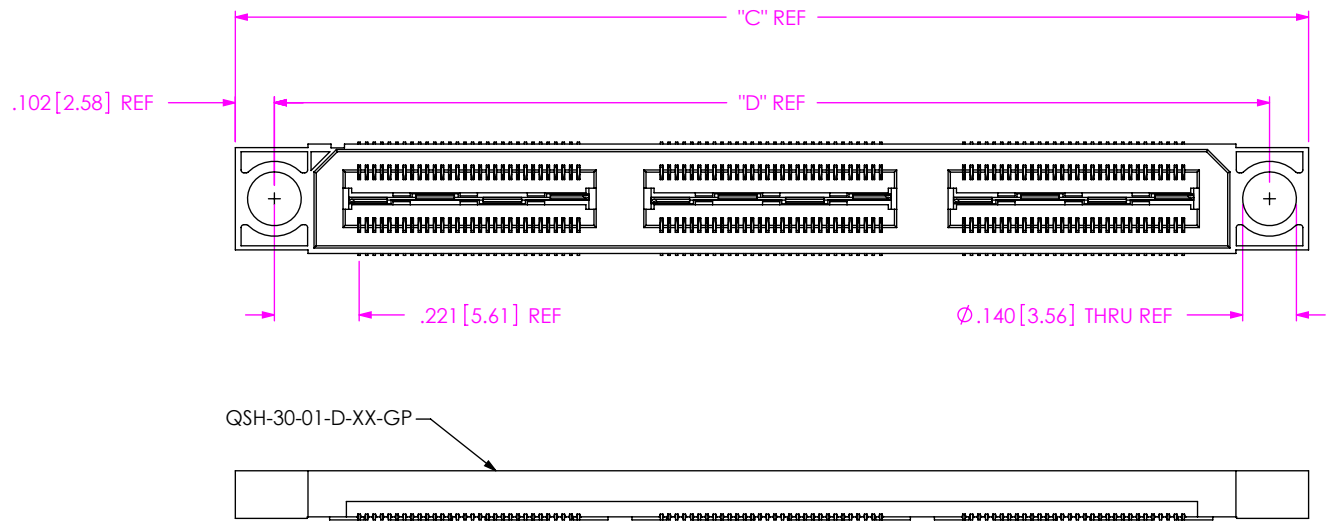
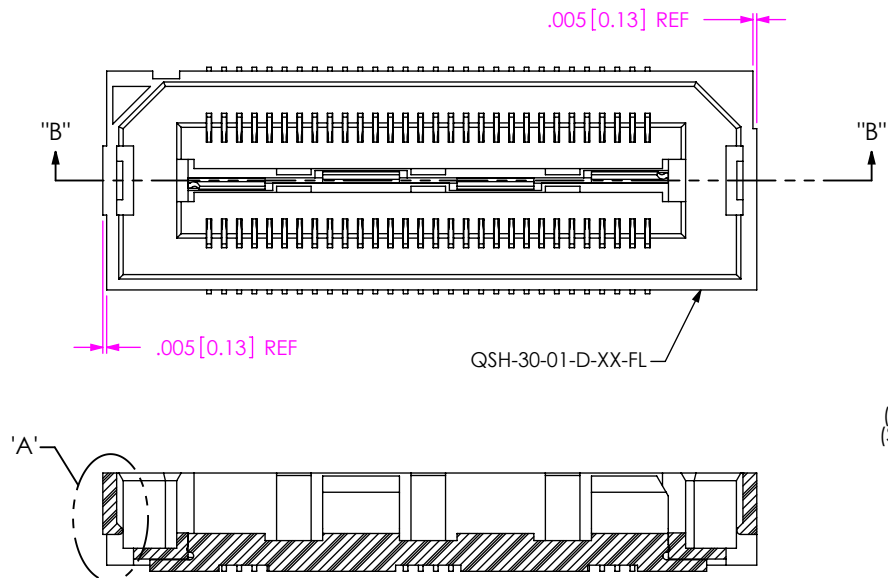
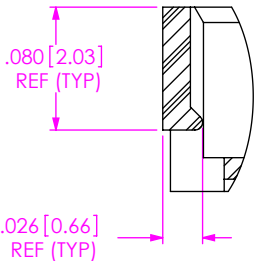


FIG 4
-GP: GUIDE POSTS
(QSH-090-01-X-D-GP SHOWN)
(SAME AS FIG 1, EXCEPT AS SHOWN)



SECTION "B"-"B"
SCALE 4 : 1

FIG 5
-FL: FRICTION LOCKS
(QSH-030-01-X-D-FL SHOWN)
(NOT AVAILABLE WITH -GP OPTION)
(SAME AS FIG 1, EXCEPT AS SHOWN)



DETAIL "A"
SCALE 8 : 1

<p>PROPRIETARY NOTE</p> <p>THIS DOCUMENT CONTAINS CONFIDENTIAL AND PROPRIETARY INFORMATION AND ALL DESIGN, MANUFACTURING, REPRODUCTION, USE, PATENT RIGHTS AND SALES RIGHTS ARE EXPRESSLY RESERVED BY SAMTEC, INC. THIS DOCUMENT SHALL NOT BE DISCLOSED, IN WHOLE OR PART, TO ANY UNAUTHORIZED PERSON OR ENTITY NOR REPRODUCED, TRANSFERRED OR INCORPORATED IN ANY OTHER PROJECT IN ANY MANNER WITHOUT THE EXPRESS WRITTEN CONSENT OF SAMTEC, INC.</p>		<p>520 PARK EAST BLVD, NEW ALBANY, IN 47150 PHONE: 812-944-6733 FAX: 812-948-5047 e-Mail info@SAMTEC.com code 55322</p>
DO NOT SCALE DRAWING		DESCRIPTION: .5mm DOUBLE ROW HS SOCKET ASSEMBLY
SHEET SCALE: 2:1		DWG. NO. QSH-XXX-01-X-D-XXX
		BY: DEAN P 05/21/1999 SHEET 3 OF 4

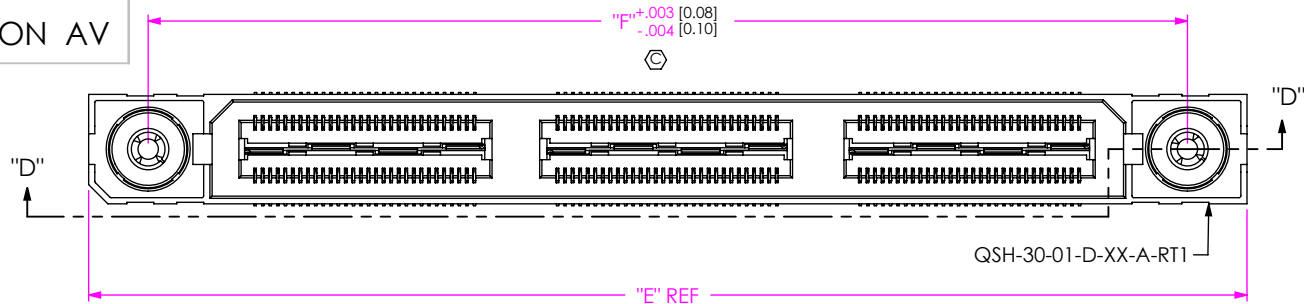
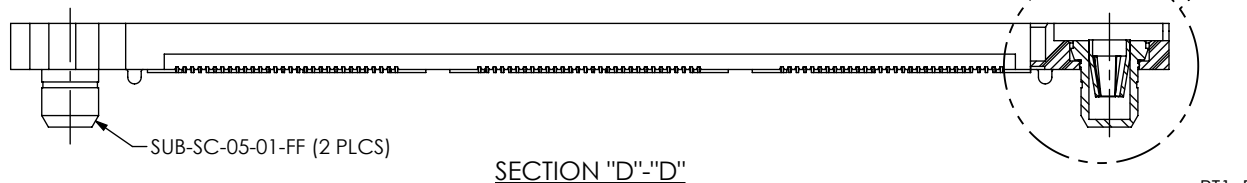
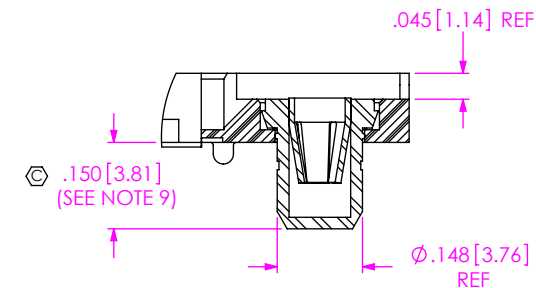


TABLE 5		
POS	"E"	"F"
-030	1.438 [36.51]	1.129 [28.66]
-060	2.225 [56.52]	1.916 [48.67]
-090	3.013 [76.52]	2.704 [68.67]
-120	N/A	N/A
-150	N/A	N/A



SECTION "D"-"D"

FIG 6
-RT1: RETENTION OPTION
(MUST USE -A OPTION)
(QSH-090-01-X-D-A-RT1 SHOWN)
(NOT AVAILABLE WITH -LC, -GP, OR -FL OPTIONS)
(NOT AVAILABLE WITH -120 & -150 POS)
(SAME AS FIG 1, EXCEPT AS SHOWN)



DETAIL 'E'
SCALE 3:1

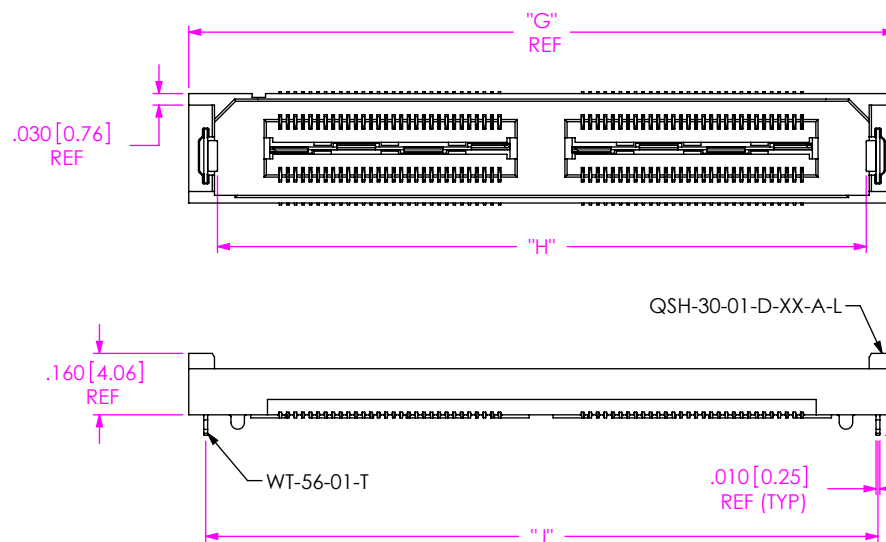


TABLE 6			
POS	"G"	"H"	"J"
-030	1.048 [26.61]	.897 [22.78]	.959 [24.36]
-060	1.835 [46.61]	1.684 [42.78]	1.747 [44.36]
** -090	2.623 [66.61]	2.472 [62.78]	2.534 [64.36]

(** = NOT RELEASED)

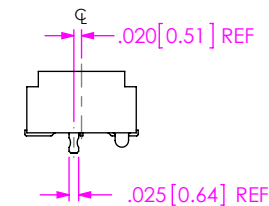


FIG 7
-L: RETENTION OPTION
(QSH-060-01-X-D-A-L SHOWN)
(NOT AVAILABLE WITH -LC, -GP, -FL, OR -RT1 OPTIONS)
(NOT AVAILABLE WITH -090, -120, & -150 POS)
(SAME AS FIG 1, EXCEPT AS SHOWN)

PROPRIETARY NOTE
THIS DOCUMENT CONTAINS CONFIDENTIAL AND PROPRIETARY INFORMATION AND ALL DESIGN, MANUFACTURING, REPRODUCTION, USE, PATENT RIGHTS AND SALES RIGHTS ARE EXPRESSLY RESERVED BY SAMTEC, INC. THIS DOCUMENT SHALL NOT BE DISCLOSED, IN WHOLE OR PART, TO ANY UNAUTHORIZED PERSON OR ENTITY NOR REPRODUCED, TRANSFERRED OR INCORPORATED IN ANY OTHER PROJECT IN ANY MANNER WITHOUT THE EXPRESS WRITTEN CONSENT OF SAMTEC, INC.

DO NOT SCALE DRAWING

SHEET SCALE: 2:1

samtec

520 PARK EAST BLVD, NEW ALBANY, IN 47150
PHONE: 812-944-6733 FAX: 812-948-5047
e-Mail: info@SAMTEC.com code 55322

DESCRIPTION:
.5mm DOUBLE ROW HS SOCKET ASSEMBLY

DWG. NO.
QSH-XXX-01-X-D-XXX

BY: DEAN P 05/21/1999 SHEET 4 OF 4