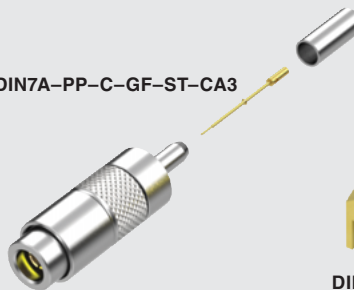
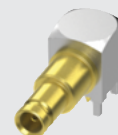




DIN7A-PP-C-GF-ST-CA3



DIN7A-J-P-GF-RA-BH1



DIN7A-J-P-GF-ST-TH1



DIN7A SERIES

75Ω DIN 1.0/2.3 JACKS & PLUGS

Mates with:

RFB8T, RFA6T, RFB6T,
RF179, GRF7H-C

SPECIFICATIONS

For complete specifications see
www.samtec.com?DIN7A-TH,
www.samtec.com?DIN7A-BH or
www.samtec.com?DIN7A-CA

Shell Material:

Brass

Contact:

Copper Alloy

Insulator Material:

PTFE

Operating Temp Range:

-65°C to +125°C

Impedance:

75Ω

Frequency Range:

Testing Now! *

V.S.W.R.:

Testing Now!

Working Voltage:

250 Vrms

Dielectric Withstanding:

750 Vrms

Contact Resistance:

Center Contact: Testing Now!

Outer Contact: Testing Now!

Insulator Resistance:

Testing Now!

DIN7A

GENDER

TYPE

PLATING

ORIENTATION

TERMINATION

-J
= Jack

-P
= PCB
Mount

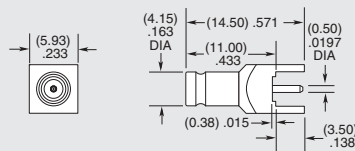
-GF
= 10μ" (0.25 μm)
Gold center
contact,
3μ" (0.08 μm)
Gold outer
contact,
(100μ" (2.54 μm)
Nickel body
-RA only)

-ST
= Straight
(-TH1 only)

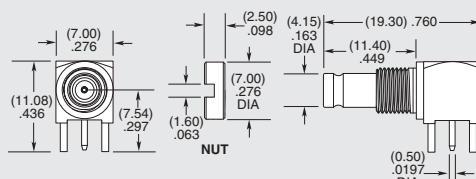
-RA
= Right Angle
(-BH1 only)

-TH1
= Through-hole
(-ST only)

-BH1
= Bulkhead
Through-hole
(-RA only)



-ST-TH1



-RA-BH1

DIN7A

PP

TYPE

PLATING

ORIENTATION

TERMINATION

-PP
= Push Pull Plug

-C
= Cable

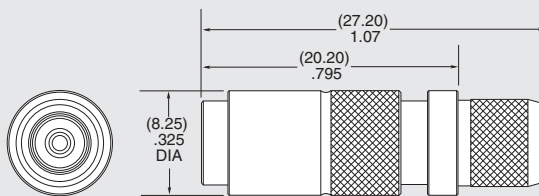
-GF
= 10μ" (0.25 μm)
Gold on
contact,
Flash Gold
on outer
contact,
Nickel on
shell

-ST
= Straight

-CA3
= RG 179 Cable

-CA6
= RG 6 or Belden
1694A Cable

-CA8
= Belden 1855A Cable



-CA6 SHOWN

Note:

Designed to meet SMPTE
424M 3G-SDI specifications.

Supplied with pins and ferrules. See website for dimensions.