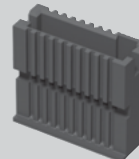


SFM-120-03-L-D



SFM-110-02-L-D

TSDF-10-D-S



T1M44-L-2830-01-G



(1.27 mm) .050"

TSDF, T1M44, SFM SERIES

DISCRETE WIRE COMPONENTS & TOOLING

SPECIFICATIONS

For complete specifications see www.samtec.com?TSDF, www.samtec.com?T1M44-L or www.samtec.com?T1M44-R

TOOLING

- Hand Tool:
CAT-HT-203-2832-11
- Mini Applicator
CAT-MA-144-2830-XX-01
- Extraction Tool:
CAT-EX-169-01

Note: Some sizes, styles and options are non-standard, non-returnable.

TYPE	POSITIONS PER ROW	ROW OPTION	S	TYPE	WIRE GAUGE	01	PLATING
TSDF = Housing	-03, -04, -05, -07, -10, -15, -20, -25, -40, -50 (Standard sizes)	-D = Double Row		T1M44-L = Contact, Loose T1M44-R = Contact, Full Reel (35,000 Parts per Reel)	-2830 = 28 to 30 AWG		-G = 10 μ " (0.25 μ m) Gold on contact

Mates with:
TFSD

SPECIFICATIONS

For complete specifications and recommended PCB layouts see www.samtec.com?SFM

Insulator Material:
Black Liquid Crystal Polymer
Plating:
Au or Sn over
50 μ " (1.27 μ m) Ni
Voltage Rating:
250 VAC mated with TFM
Operating Temp Range:
-55 °C to +125 °C
Contact Resistance: 15 m Ω
RoHS Compliant: Yes

Processing:
Lead-Free Solderable:
Yes

SMT Lead Coplanarity:
(0.10 mm) .004" max (05-25)
(0.15 mm) .006" max (30-50)

RECOGNITIONS

For complete scope of recognitions see www.samtec.com/quality



SFM	1	NO. PINS PER ROW	LEAD STYLE	PLATING OPTION	ROW OPTION
03, 04, 05, 07, 10, 15, 20, 25, 40, 50			-01, -03 = Through-hole Tiger Eye™ Contact (BeCu) -02 = Surface Mount Tiger Eye™ Contact (BeCu)	-L = 10 μ " (0.25 μ m) Gold on contact, Matte Tin on tail	-D = Double Row

OTHER SOLUTIONS

- Many other options available. See SFM, SFML, SFC Series on website or contact Samtec.

LEAD STYLE	A	B
-01	(3.05) .120	(0.51) .020
-03	(1.91) .075	(0.41) .016

WWW.SAMTEC.COM

Due to technical progress, all designs, specifications and components are subject to change without notice.