

NOTES:

1. MAX ALLOWABLE BOW: .005 INCH/INCH.
2. TERMINAL PUSHOUT FORCE: 2 lbs. MIN.
3. MAX PIN ROTATION IN BODY: 2°.
4. CUT FLASH .010 MAX
5. TUBE POSITIONS 8-50 ONLY. POSITIONS 1-7 TO BE BULK PACKAGED.
6. TUBE VIEWS ARE FOR PLUG LOCATION ONLY, THIS IS NOT AN ILLUSTRATION FOR PART ORIENTATION.

CRITICAL DIMENSION INSPECTION TABLE	
ASSEMBLY OPERATION	IN-PROCESS INSPECTION
FILL	*C1
FILL/POLARIZE	*C1
2ND PRESS	*C1

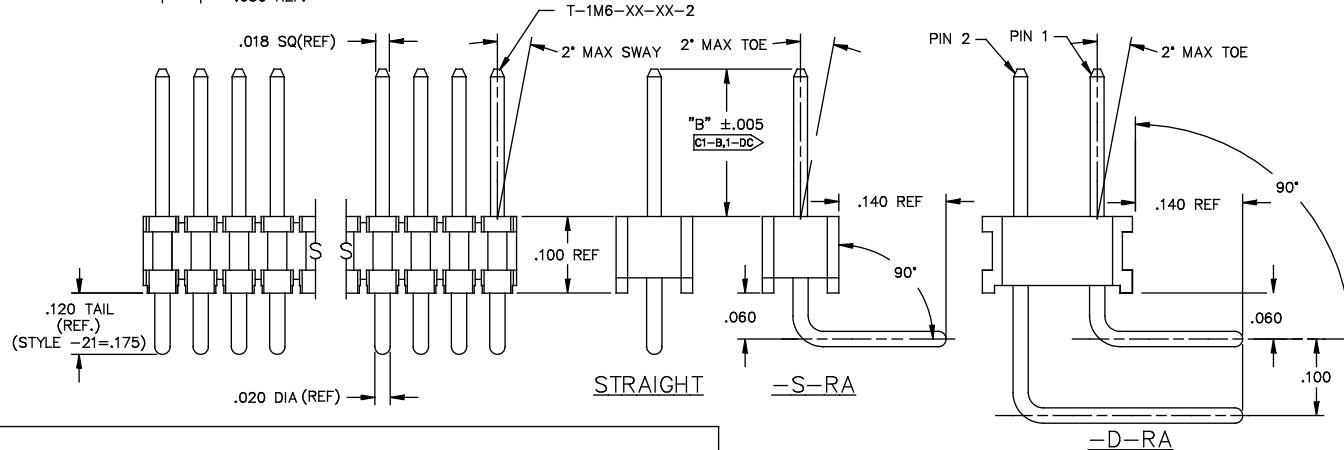
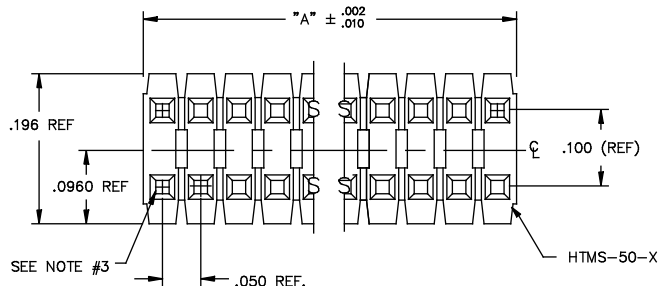
*WHERE APPLICABLE

DIMENSIONS ARE IN INCHES		TOLERANCES ARE:	
ONE PLACE DECIMALS ± .1	THREE PLACE DECIMALS ± .005	ANGLES ± 2°	
TWO PLACE DECIMALS ± .01	FOUR PLACE DECIMALS ± .0020		

TITLE: **TERMINAL MICRO STRIP**

DWG NO: **TMS-1XX-XX-XX-X-XX-XXX**

SHEET 1 OF 1



TMS-1XX-XX-XX-X-XX-XXX

OPTION
-POLARIZING SPECIFICATION
XXX INDICATES POS. TO BE OMITTED
(SEE FIG. 1)

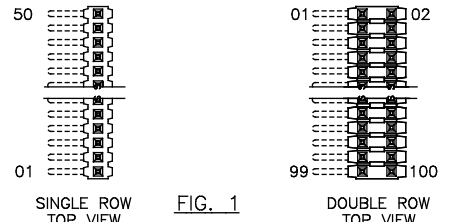
OPTION
-RA: RIGHT ANGLE (SEE TABLE 1)
(SINGLE & DOUBLE RA AVAILABLE
IN STYLE -01, -02, & -03 ONLY)

BODY SPECIFICATION
-S: SINGLE (USE HTMS-50-S)
-D: DOUBLE (USE HTMS-50-D)

PLATING SPECIFICATION
-G: 10μ" GOLD IN CONTACT AREA, 10μ" GOLD ON TAIL
-T: MATTE TIN CONTACT AND TAIL
ONLY AVAILABLE ON LEAD STYLES -01, -02, -51 AND -52.
-S: 30μ" SELECTIVE GOLD IN CONTACT AREA, MATTE TIN ON TAIL
-F: 3μ" FLASH GOLD IN CONTACT AREA, MATTE TIN ON TAIL
-H: 30μ" HEAVY GOLD IN CONTACT AREA, 3μ" GOLD ON TAIL
-FM: 3μ" SELECTIVE FLASH GOLD IN CONTACT AREA, MATTE TIN ON TAIL
-SM: 30μ" SELECTIVE GOLD IN CONTACT AREA, MATTE TIN ON TAIL
-TM: MATTE TIN CONTACT AND TAIL
ONLY AVAILABLE ON LEAD STYLES -01, -02, -51 AND -52.
-L: 10μ" LIGHT SELECTIVE GOLD IN CONTACT AREA, MATTE TIN ON TAIL

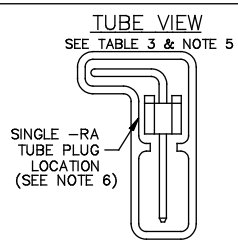
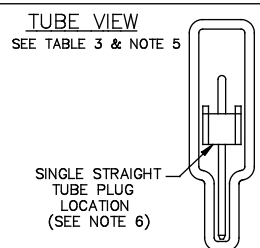
LENGTH	"L"	CONTACT AREA
-01	.440	.140
-02	.410	.140
-03	.610	.190
-04	.505	.190
-05	.705	.190
-12	.425	.165
-13	.625	.190
-14	.555	.190
-15	.755	.190
-16	.825	.190
-17	.320	.060
-18	.450	.190
-19	.650	.190
-21	.505	.190
-25	.330	.060
-26	.373	.075
-27	.398	.100
-28	1.050	.190

* REF FOR PIN LENGTH



BODY STYLE	LEAD STYLE	TUBE	PLUG	
TMS-DOUBLE STRAIGHT STYLES	-01, -21, -51, -52	PT-1-24-01-22	TP-03	
	-02	PT-1-24-01-95	TP-03	
	-53	PT-1-24-02-66	TP-03	
	-55, -56	PT-1-24-01-29	TP-24	
	-54	PT-1-24-02-46	TP-03	
	-57	PT-1-24-02-25	TP-03	
	-58, -59	PT-1-24-16-29	TP-07	
	-60	PT-1-24-18-29	TP-07	
	TMS-SINGLE STRAIGHT STYLES	-01	PT-1-24-01-24	TP-24
		-21	PT-1-24-02-29	TP-24
-58, -59, -60		PT-1-24-10-03	TP-33	
-02		PT-1-24-01-12	TP-12	
-51, -52		PT-1-24-01-66	TP-24	
-53, -54, -55, -56		PT-1-24-02-03	TP-24	
-57		PT-1-24-01-46	TP-24	
TMS-DOUBLE RIGHT ANGLE		-01, -02, -03	PT-1-24-02-66	TP-03
		-01, -02, -03	PT-1-24-01-66	TP-24

STRAIGHT OPTION		RIGHT ANGLE OPTION			ALL
LEAD STYLE	TERMINAL SPEC.	LEAD STYLE	PIN #1	PIN #2	"B"
-01	T-1M6-18-XX-2	-01	T-1M6-14-XX-2	T-1M6-15-XX-2	.230
-02	T-1M6-17-XX-2	-02	T-1M6-12-XX-2	T-1M6-13-XX-2	.100
-03	N/A	-03	T-1M6-18-XX-2	T-1M6-19-XX-2	.125
-21	T-1M6-21-XX-2	-21	N/A	N/A	.230
-51	T-1M6-02-XX-2	-51	N/A	N/A	.190
-52	T-1M6-12-XX-2	-52	N/A	N/A	.205
-53	T-1M6-04-XX-2	-53	N/A	N/A	.285
-54	T-1M6-14-XX-2	-54	N/A	N/A	.335
-55	T-1M6-03-XX-2	-55	N/A	N/A	.390
-56	T-1M6-13-XX-2	-56	N/A	N/A	.405
-57	T-1M6-19-XX-2	-57	N/A	N/A	.430
-58	T-1M6-05-XX-2	-58	N/A	N/A	.485
-59	T-1M6-15-XX-2	-59	N/A	N/A	.535
-60	T-1M6-16-XX-2	-60	N/A	N/A	.605



PROPRIETARY NOTE
THIS DOCUMENT CONTAINS INFORMATION CONFIDENTIAL AND PROPRIETARY TO SAMTEC INC. AND SHALL NOT BE REPRODUCED OR TRANSMITTED IN ANY FORM OR BY ANY MEANS, ELECTRONIC OR MECHANICAL, INCLUDING PHOTOCOPYING, RECORDING, OR BY ANY INFORMATION STORAGE AND RETRIEVAL SYSTEM, WITHOUT THE WRITTEN CONSENT OF SAMTEC INC.

MATERIAL:
BODY:
LIQUID CRYSTAL POLYMER
COLOR: BLACK
TERMINAL:
PHOSPHOR BRONZE



520 PARK EAST BLVD. NEW ALBANY, INDIANA 47151-1147
PHONE (812) 944-6733 P.O. BOX 1147
CODE 55322

MADE BY: PURVIS 8-13-87
CHECKED BY: WILLIAMS 10-21-87
APPROVAL: TMS-1XX-XX-XX-X-XX-XXX
SHEET 1 OF 1