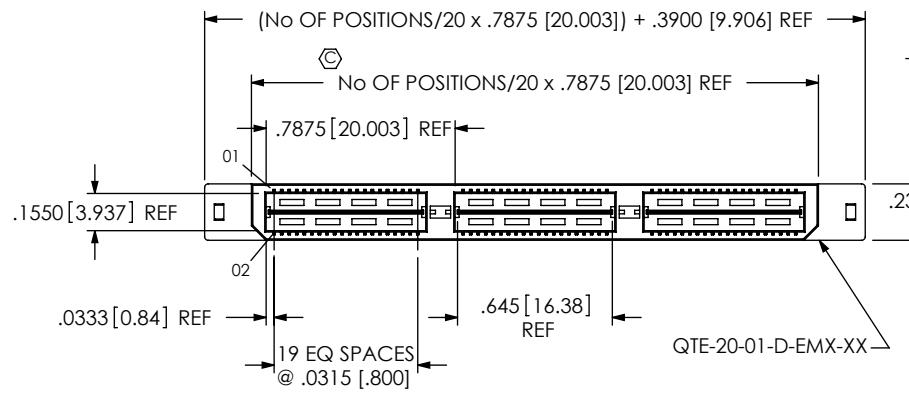


TABLE 2					
EDGE MOUNT THICKNESS	"A"	"B"	"C"	BODY	CONTACT
-EM2	.130[3.30]	.0670[1.702]	.058[1.47]	QTE-20-01-D-EM2-XX	T-1S42-01-XXX
*-EM3	.160[4.06]	.0980[2.489]	.088[2.24]	QTE-20-01-D-EM3-XX	T-1S42-02-XXX

* = SEE NOTE 13

DO NOT SCALE FROM THIS PRINT



QTE-XXX-01-XXX-D-EMX-XX

- No OF POSITIONS: -020, -040, -060, **_080, **_100 (PER ROW)
- **SEE NOTE 16
- LEAD STYLE: -01: .1680[4.267]
- OPTION:
 - GP: GUIDE POST (USE QTE-20-01-D-EMX-XX-GP, SEE FIG 2, SHEET 2)
 - TY: TRAY PACKAGING
- EDGE MOUNT THICKNESS:
 - EM2: .064[1.63] +/- .004 PCB (USE QTE-20-01-D-EM2-XX & T-1S42-01-X)
 - EM3: (USE QTE-20-01-D-EM3-XX & T-1S42-02-X) (SEE NOTE 13)
- ROW SPECIFICATION: -D: DOUBLE (USE QTE-20-XX-D-EMX-XX)
- PLATING SPECIFICATION:
 - F: 3μ" SELECTIVE GOLD IN CONTACT AREA, MATTE TIN ON TAILS (USE T-1S42-XX-F & T-1G1-01-F) (SEE NOTE 11)
 - L: 10μ" SELECTIVE GOLD IN CONTACT AREA, MATTE TIN ON TAILS (USE T-1S42-XX-L & T-1G1-01-L)
 - H: 30μ" GOLD IN CONTACT AREA, 3μ" GOLD ON TAIL (USE T-1S42-XX-H & T-1G1-01-G)
 - C: 50μ" GOLD IN CONTACT AREA, 3μ" GOLD ON TAIL (USE T-1S42-XX-C & T-1G1-01-L)
 - STL: 30μ" SELECTIVE GOLD IN CONTACT AREA, TIN/LEAD (90%/10 +/-5%) TAIL (USE T-1S42-XX-STL & T-1G1-01-STL)
 - FTL: 3μ" SELECTIVE GOLD IN CONTACT AREA, TIN/LEAD (90%/10 +/-5%) TAIL (USE T-1S42-XX-FTL & T-1G1-01-FTL)
- No OF BANKS

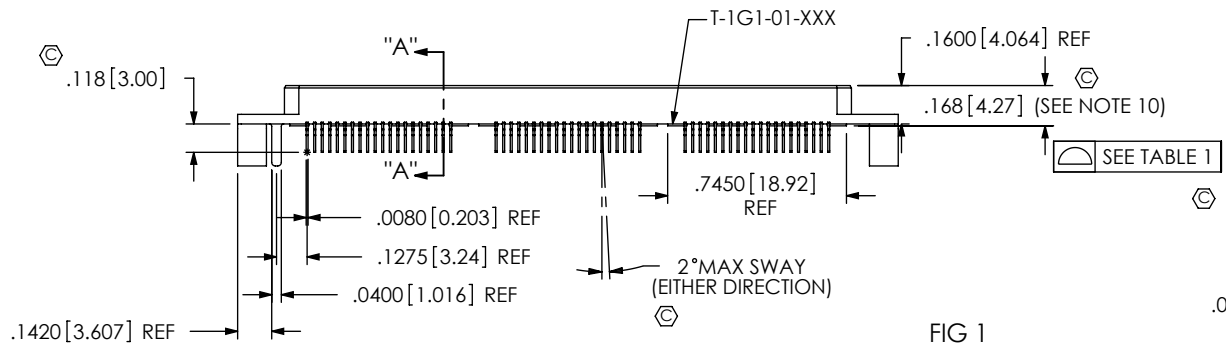
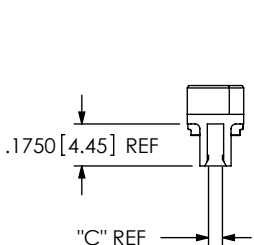


FIG 1 QTE-060-01-XXX-D-EM2 SHOWN

SECTION "A"- "A"

NOTES:

- ⊕ REPRESENTS A CRITICAL DIMENSION.
- NOTE DELETED.
- MAXIMUM BURR ALLOWANCE: .0015 [0.03]
- MINIMUM TERMINAL RETENTION: 6 OZ.
- MINIMUM GROUND PLANE RETENTION: 1 LB.
- PARTS TO BE MOLD-TO-POSITION.
- NOTE DELETED.
- NOTE DELETED.
- NOTE DELETED.
- NOTE DELETED.
- MAXIMUM VARIANCE: .002 [0.05].
- L PLATING CAN BE SUBSTITUTED FOR -F PLATING.
- SEE http://www.samtec.com/processing/edgemt_tectalk/index.htm FOR INFORMATION ON PROCESSING EDGE MOUNT PARTS TO BOARDS.
- EM3 IS NOT A STANDARD OFFERING; AVAILABLE AS AN ASP ONLY. PLEASE CONTACT SAMTEC INTERCONNECT PROCESSING GROUP WITH ORDER INQUIRIES
- NOTE DELETED.
- PARTS WITHOUT -TY OPTION SHALL BE PACKAGED IN TRAYS.
- AVAILABLE FOR EXISTING CUSTOMERS ONLY.

TABLE 1		
No OF POSITIONS	GND PLANE COPLANARITY	ASSEMBLY BOW
-020 THRU -060	.004 [0.10]	.004 [0.10]
**_080 THRU **_100	.005[1.27]	.005[1.27]

** = SEE NOTE 16

UNLESS OTHERWISE SPECIFIED, DIMENSIONS ARE IN INCHES. TOLERANCES ARE:
 DECIMALS: .XX: ±.01 [3] .XXX: ±.005 [13] .XXXX: ±.0020 [051]
 ANGLES: 2°

PROPRIETARY NOTE
 THIS DOCUMENT CONTAINS INFORMATION CONFIDENTIAL AND PROPRIETARY TO SAMTEC, INC. AND SHALL NOT BE REPRODUCED OR TRANSFERRED TO OTHER DOCUMENTS OR DISCLOSED TO OTHERS OR USED FOR ANY PURPOSE OTHER THAN THAT WHICH IT WAS OBTAINED WITHOUT THE EXPRESSED WRITTEN CONSENT OF SAMTEC, INC.

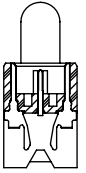
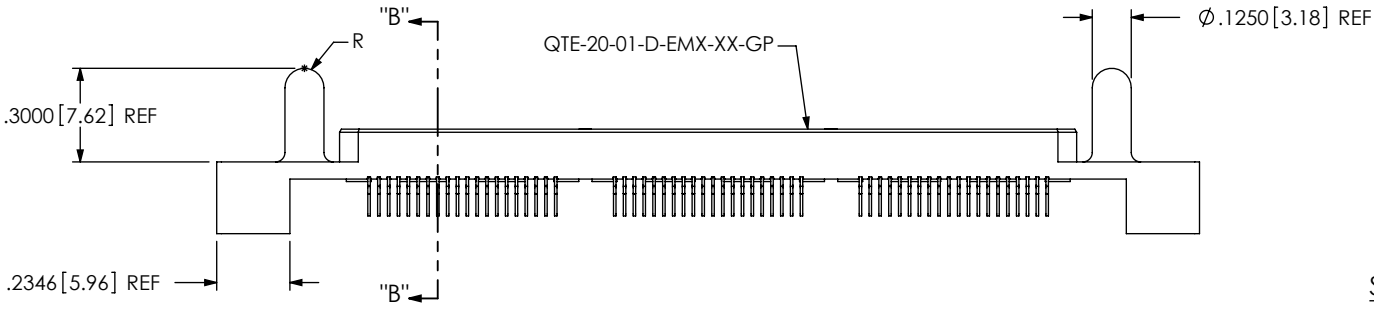
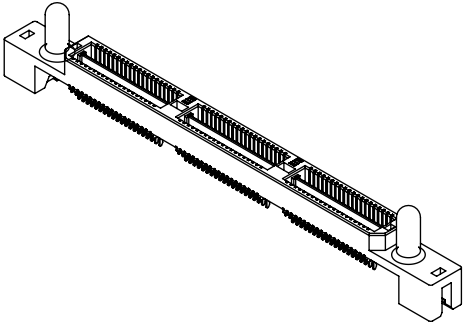
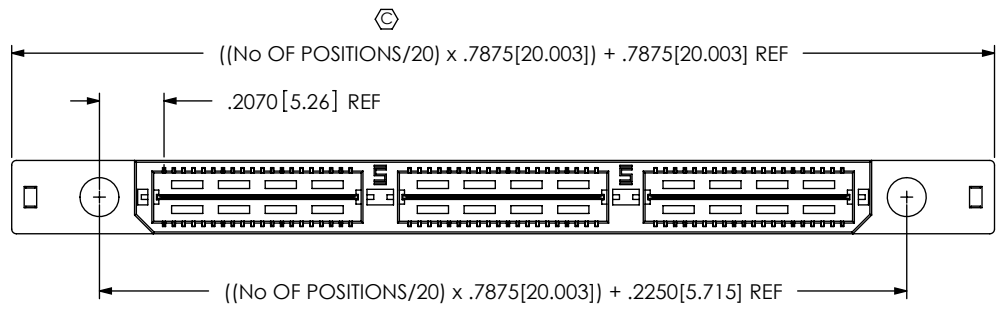


520 PARK EAST BLVD, NEW ALBANY, IN 47150
 PHONE: 812-944-6733 FAX: 812-948-5047
 e-Mail: info@SAMTEC.com code 53322

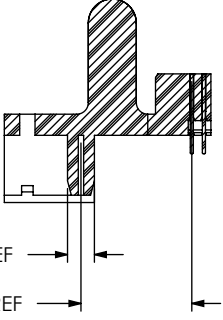
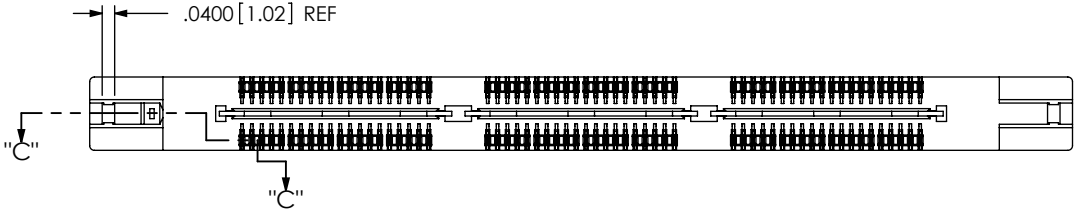
MATERIAL: DO NOT SCALE DRAWING SHEET SCALE: 1:0.8
 INSULATOR: LCP COLOR: BLACK
 TERMINAL & GROUND PLANE: PHOS BRONZE

DESCRIPTION: .8mm EDMOUNT HS TERMINAL ASSEMBLY

DWG. NO. QTE-XXX-01-XXX-D-EMX-XX
 BY: DEAN P 9/2/1999 SHEET 1 OF 2



SECTION "B"-"B"



SECTION "C"-"C"
SCALE 2 : 1

FIG 2
-GP OPTION
(SAME AS FIG 1, UNLESS OTHERWISE STATED)

PROPRIETARY NOTE
 THIS DOCUMENT CONTAINS INFORMATION CONFIDENTIAL AND PROPRIETARY TO SAMTEC, INC. AND SHALL NOT BE REPRODUCED OR TRANSFERRED TO OTHER DOCUMENTS OR DISCLOSED TO OTHERS OR USED FOR ANY PURPOSE OTHER THAN THAT WHICH IT WAS OBTAINED WITHOUT THE EXPRESSED WRITTEN CONSENT OF SAMTEC, INC.

DO NOT SCALE DRAWING
 SHEET SCALE: 1.625:1



520 PARK EAST BLVD, NEW ALBANY, IN 47150
 PHONE: 812-944-6733 FAX: 812-948-5047
 e-Mail info@SAMTEC.com code 55322

DESCRIPTION:
 .8mm EDMOUNT HS TERMINAL ASSEMBLY

DWG. NO.
 QTE-XXX-01-XXX-D-EMX-XX

BY: DEAN P 9/2/1999 SHEET 2 OF 2