

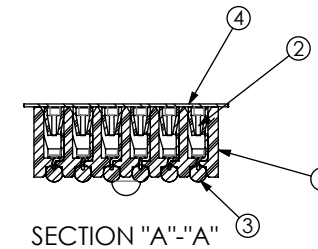
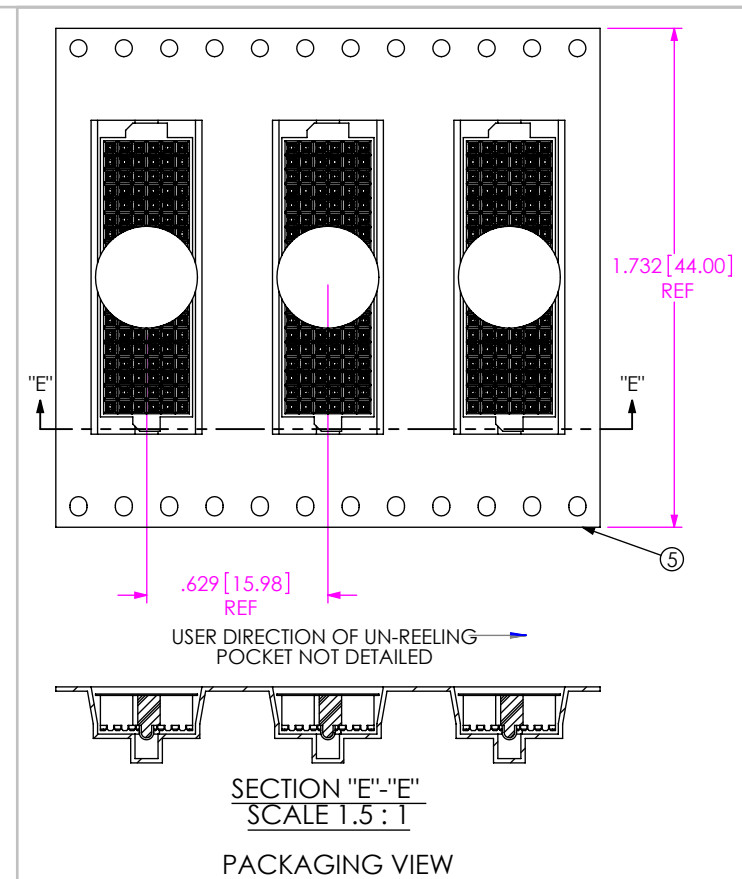
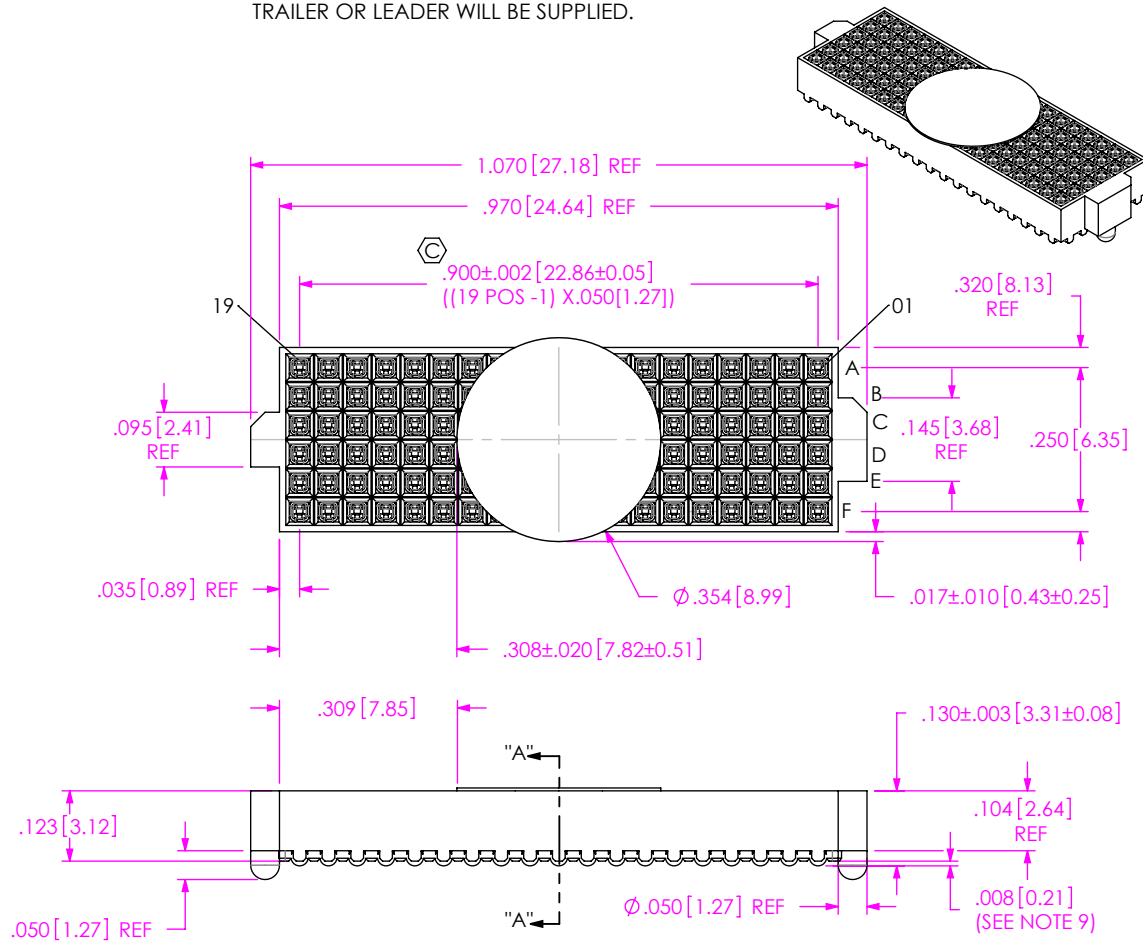


DO NOT
SCALE FROM
THIS PRINT

NOTES:

1. **USE LEAD FREE SOLDER BALLS & ASP-103597-02-B BODY FOR NON-STANDARD 19 POSITION.**
2.  REPRESENTS A CRITICAL DIMENSION.
3. MAXIMUM BURR ALLOWANCE: .0005[0.013].
4. MINIMUM PUSHOUT FORCE: .5 LB [2.22 N].
5. MAXIMUM ALLOWABLE BOW: .002[0.05] INCH/INCH AFTER ASSEMBLY.
6.  CONTACT TO BE FLUSH $\pm .002$ [0.05].
7. ONE REEL MINIMUM PLATING REQUIREMENT (85,000 CONTACTS PER REEL).
8. ALL DIMS TO BE SYMMETRICAL ABOUT THE CENTERLINE WITHIN $\pm .001$ [0.03].
9. MAXIMUM VARIATION BETWEEN SOLDERBALLS: .0025[0.064]
10. REFER TO VISUAL INSPECTION BOARD FOR SOLDERBALL APPEARANCE CHECKS.
11. THE DISTANCE FROM THE CENTER OF ANY SOLDERBALL TO THE CENTER OF ANY ADJACENT INNER PEG SHALL BE $.025 \pm .005$ [0.64 \pm 0.13].
12. PARTS TO BE PACKAGED IN TAPE & REEL. FOR QTY'S LESS THAN 125 PCS, NO TRAILER OR LEADER WILL BE SUPPLIED.

ANY REV MADE TO THIS PRINT MUST HAVE AN UPDATED MKT PRINT



| ITEM NO. | PART NUMBER | QUANTITY | MATERIAL |
|----------|------------------------|----------|------------------------------|
| 1 | ASP-103597-02-B | 1.0000 | LCP, UL 94 V0, COLOR: BLACK |
| 2 | C-226-03-H | 114.00 | PHOS BRONZE, 521 HARD TEMPER |
| 3 | SDB-030-9653 | 114.00 | 96.5% Sn/3% Ag/.5% Cu |
| 4 | K-DOT-.354-.469-.005 | 1.0000 | POLYIMIDE FILM |
| 5 | CT-ASP2830MS | 00200 | CONDUCTIVE POLYMER |

UNLESS OTHERWISE SPECIFIED.
DIMENSIONS ARE IN INCHES.
TOLERANCES ARE:

| DECIMALS | ANGLES |
|--------------------|--------|
| .XX: $\pm .01$ | 2° |
| .XXX: $\pm .005$ | |
| .XXXX: $\pm .0020$ | |

PROPRIETARY NOTE
THIS DOCUMENT CONTAINS INFORMATION
CONFIDENTIAL AND PROPRIETARY TO
SAMTEC, INC. AND SHALL NOT BE REPRODUCED
OR TRANSFERRED TO OTHER DOCUMENTS OR
DISCLOSED TO OTHERS OR USED FOR ANY
PURPOSE OTHER THAN THAT WHICH IT WAS
OBTAINED WITHOUT THE EXPRESSED WRITTEN
CONSENT OF SAMTEC, INC.

PLATING:
CONTACT AREA: .000030 GOLD OVER .000050 NICKEL
REMAINDER: .000003 FLASH GOLD OVER .000050 NICKEL

F:\DWG\MISC\MKTG\ASP-103612-15-MKT.SLDDRW

PROPRIETARY NOTE

THIS DOCUMENT CONTAINS INFORMATION
CONFIDENTIAL AND PROPRIETARY TO
SAMTEC, INC. AND SHALL NOT BE REPRODUCED
OR TRANSFERRED TO OTHER DOCUMENTS OR
DISCLOSED TO OTHERS OR USED FOR ANY
PURPOSE OTHER THAN THAT WHICH IT WAS
OBTAINED WITHOUT THE EXPRESSED WRITTEN
CONSENT OF SAMTEC, INC.

DO NOT SCALE DRAWING

SHEET SCALE: 3:1

samtec

520 PARK EAST BLVD, NEW ALBANY, IN 47150
PHONE: 812-944-6733 FAX: 812-948-5047
e-Mail info@SAMTEC.com code 55322

DESCRIPTION:

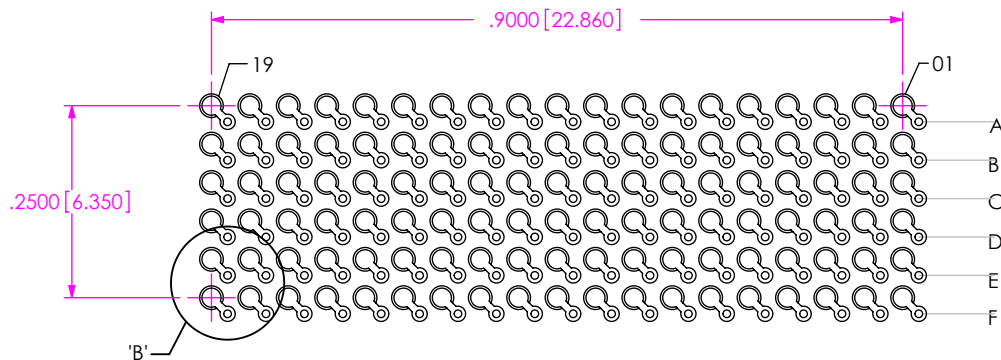
VITA 42 (LEAD FREE) SOCKET ASSEMBLY

DWG. NO.

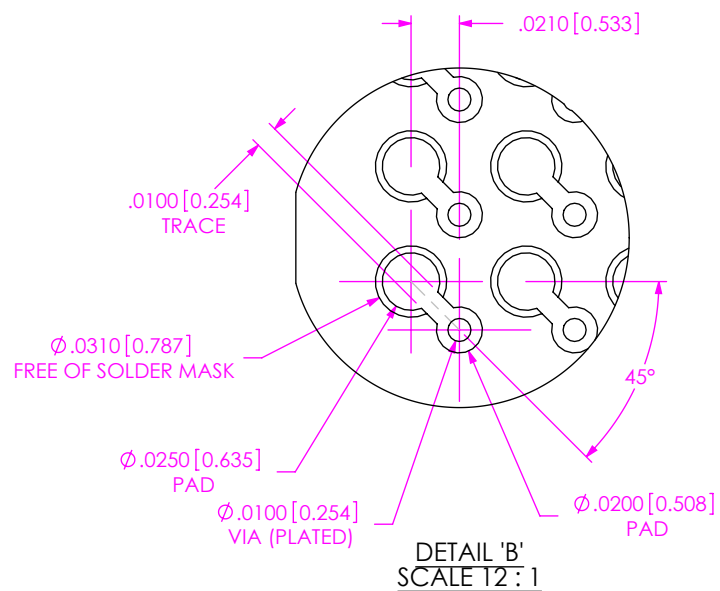
ASP-103612-15

BY: T WHELAN 03/31/11

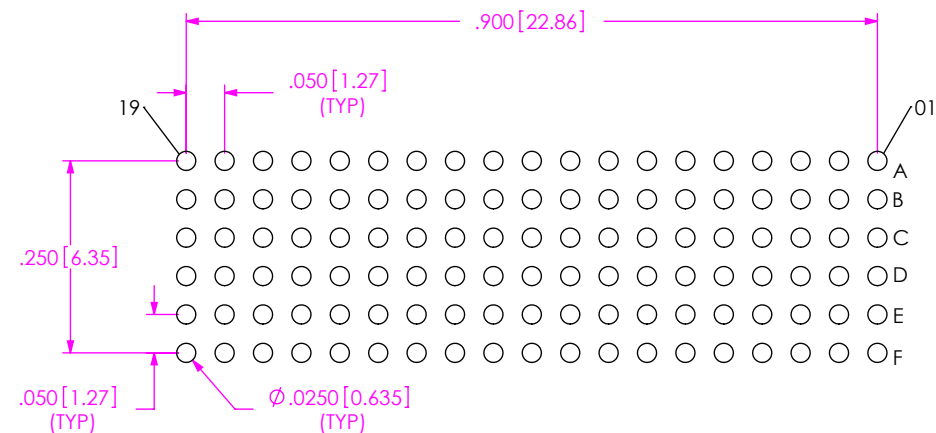
SHEET 1 OF 2

RECOMMENDED BOARD LAYOUT

NOTE:
OUTER ROWS MAY NOT NEED VIAS - THIS IS LEFT TO
THE DISCRETION OF THE BOARD DESIGNER.



RECOMMENDED STENCIL LAYOUT
STENCIL TO BE .0060 [0.152] THICK

PROPRIETARY NOTE

THIS DOCUMENT CONTAINS INFORMATION
CONFIDENTIAL AND PROPRIETARY TO
SAMTEC, INC. AND SHALL NOT BE REPRODUCED
OR TRANSFERRED TO OTHER DOCUMENTS OR
DISCLOSED TO OTHERS OR USED FOR ANY
PURPOSE OTHER THAN THAT WHICH IT WAS
OBTAINED WITHOUT THE EXPRESSED WRITTEN
CONSENT OF SAMTEC, INC.

SHEET SCALE: 4:1

samtec

520 PARK EAST BLVD, NEW ALBANY, IN 47150
PHONE: 812-944-6733 FAX: 812-948-5047
e-Mail info@SAMTEC.com code 55322

DESCRIPTION:
VITA 42 (LEAD FREE) SOCKET ASSEMBLY

DWG. NO.
ASP-103612-15

BY: T WHELAN 03/31/11

SHEET 2 OF 2