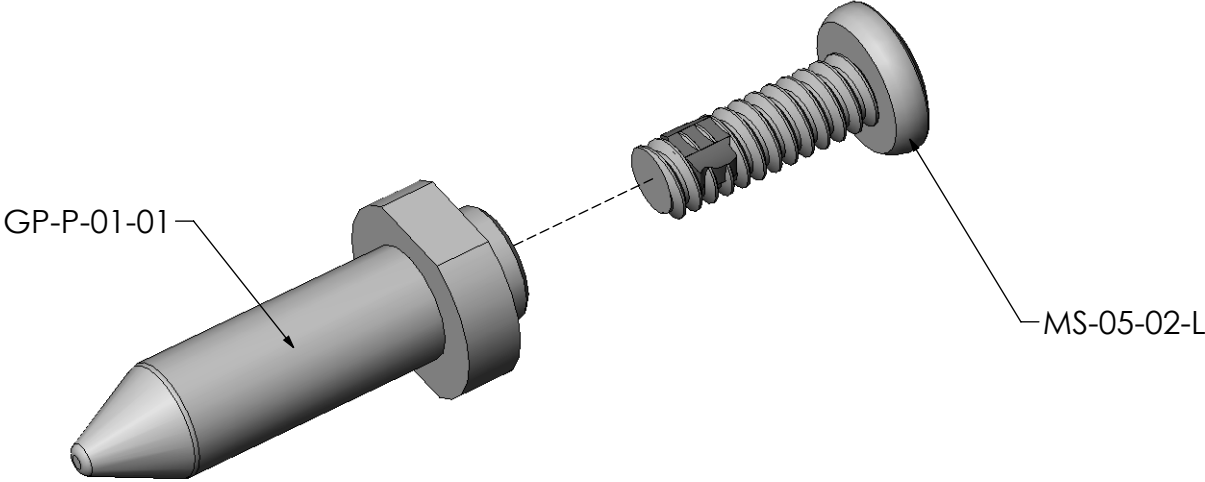
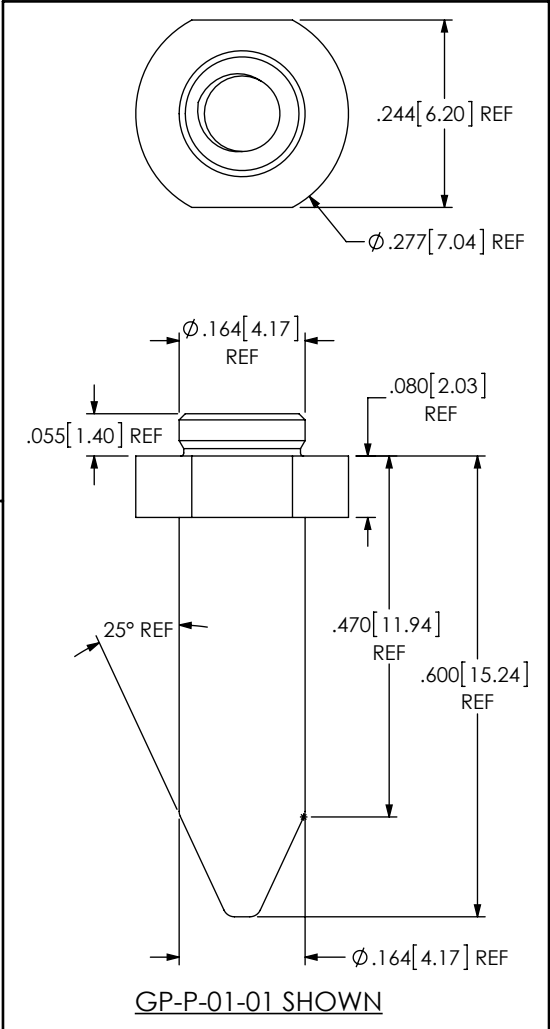
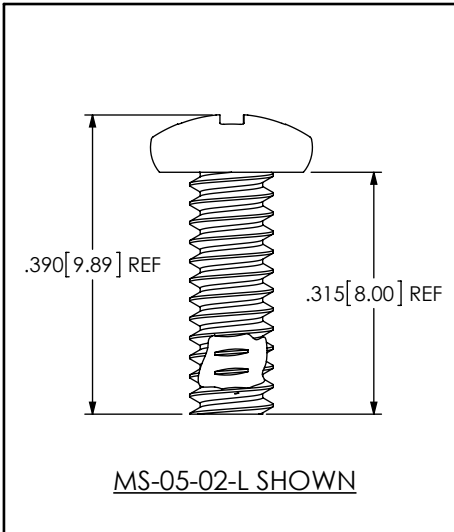


DESIGNED & DIMENSIONED
IN INCHES[MILLIMETERS]


DO NOT
SCALE FROM
THIS PRINT



GPPK-01-XX
 PLUG
 LEAD STYLE
 -01: .600 (FOR SEAM)
 THREADING
 -01: M3 x 0.5



- NOTES:
1. PARTS TO BE PACKAGED IN BAGS AS A KIT.
 2. KIT TO INCLUDE ONE GP-P-01-01 AND ONE MS-05-02-L.

UNLESS OTHERWISE SPECIFIED, DIMENSIONS ARE IN INCHES. TOLERANCES ARE: DECIMALS ANGLES .XX: ±.01 [.3] 2° .XXX: ±.005 [.13] .XXXX: ±.0020 [.051]		<div>PROPRIETARY NOTE</div> <div>THIS DOCUMENT CONTAINS INFORMATION CONFIDENTIAL AND PROPRIETARY TO SAMTEC, INC. AND SHALL NOT BE REPRODUCED OR TRANSFERRED TO OTHER DOCUMENTS OR DISCLOSED TO OTHERS OR USED FOR ANY PURPOSE OTHER THAN THAT WHICH IT WAS OBTAINED WITHOUT THE EXPRESSED WRITTEN CONSENT OF SAMTEC, INC.</div>		<div></div> <div>520 PARK EAST BLVD, NEW ALBANY, IN 47150 PHONE: 812-944-6733 FAX: 812-948-5047 e-Mail info@SAMTEC.com code 55322</div>	
MATERIAL: DO NOT SCALE DRAWING SHEET SCALE: 2:1 GUIDE POST: SUS-301 SCREW: 303 STAINLESS STEEL		DESCRIPTION: SEAM - GPK OPTION KIT			
		DWG. NO. GPPK-01-XX			
c:\enterprise\ault\DWG\MISC\MTKG\GPPK-01-XX-MKT.SLDDRW		BY: VICKY Z 12/23/2010		SHEET 1 OF 1	