

**DESIGNED & DIMENSIONED  
IN MILLIMETERS [INCHES]**

**SEMXX-1XX-XX-XX.X-XX-D-XX-XX**

**BODY OPTION**  
(LEAVE BLANK IF OPTION NOT USED, USE SEM)  
L: FRICTION LOCK  
(USE SEML, SEE FIG 6, SHEET 3)  
S: SLIM  
(USE SEMS, SEE FIG 7, SHEET 3)  
(NOT AVAILABLE WITH -A, -LC, OR -WT)  
(ONLY AVAILABLE WITH -K-TR)

**No OF POSITIONS**  
-05 THRU -50 (PER ROW)  
(IN 5 POS INCREMENTS)

**LEAD STYLE**  
-02: SURFACE MOUNT

**STACK HEIGHT**  
-03.0: 3 MM

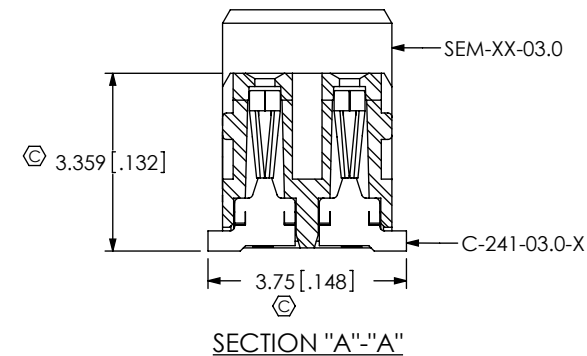
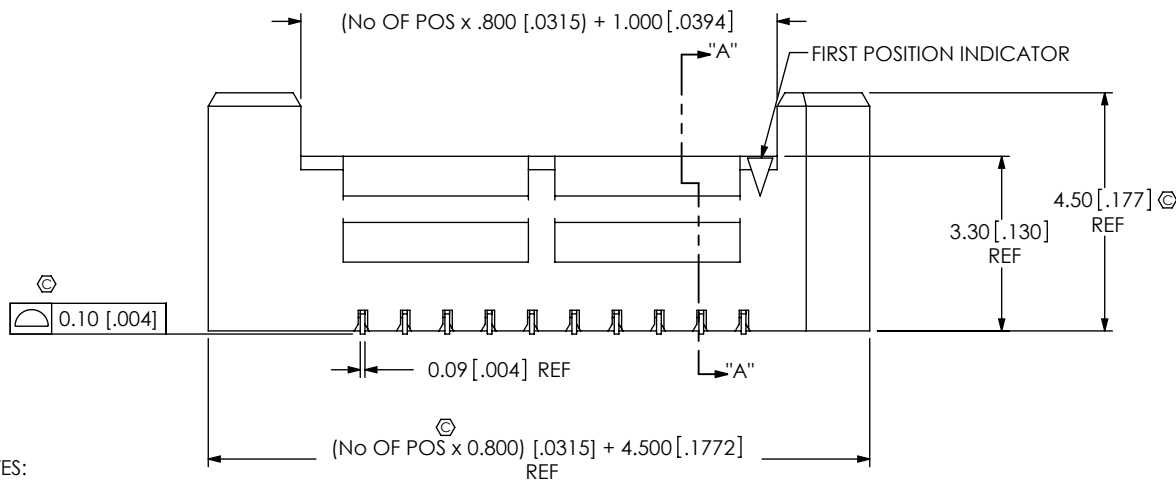
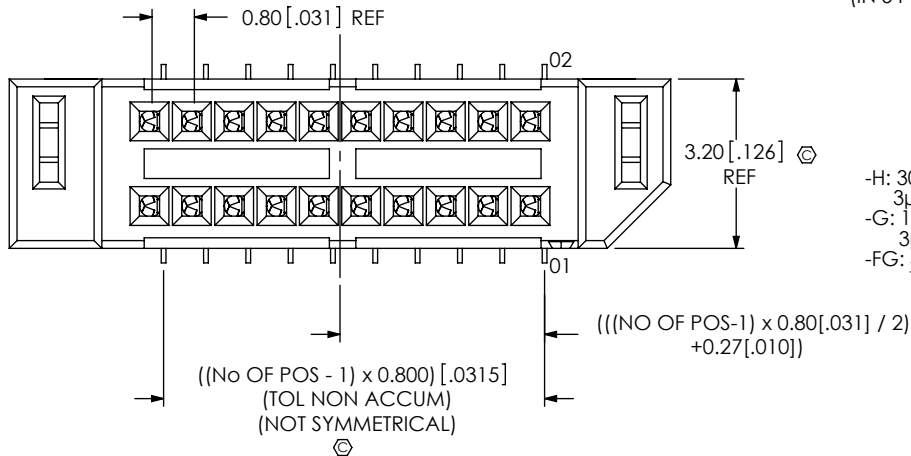
**PLATING SPECIFICATION**  
-H: 30µ" GOLD IN CONTACT AREA,  
3µ" GOLD ON TAIL  
-G: 10µ" GOLD IN CONTACT AREA,  
3µ" GOLD ON TAIL  
-FG: 3µ" FLASH GOLD ON ENTIRE  
TERMINAL

**OPTION**  
-TR: TAPE & REEL  
(SEE NOTE 7 & 8)  
-K: POLYIMIDE FILM  
(USE K-DOT-.138-.250-.005,  
SEE FIG 5, SHT 2)

**OPTION**  
-A: ALIGNMENT PIN (SEE FIG 2, SHEET 2)  
(NOT AVAILABLE WITH -LC OR -WT)  
(NOT AVAILABLE ON SEML OR SEMS)  
-LC: LOCKING CLIP (SEE FIG 3, SHEET 2  
& NOTE 9)  
(NOT AVAILABLE WITH -A OR -WT)  
(NOT AVAILABLE ON SEML OR SEMS)  
-WT: WELD TAB (SEE FIG 4, SHEET 2)  
(NOT AVAILABLE WITH -A OR -LC)  
(STANDARD ON SEML)  
(NOT AVAILABLE ON SEMS)

**ROW SPECIFICATION**  
-D: DOUBLE ROW

**FIG 1**  
SEM-110-02-03.0-XX-D SHOWN



**NOTES:**

- REPRESENTS A CRITICAL DIMENSION.
- MINIMUM PUSHOUT FORCE FOR CONTACT, LOCKING CLIP AND WELD TAB: 2.22N.
- HEIGHT VARIATION BETWEEN ANY TWO CONTACTS: 0.13 MAXIMUM.
- PARTS TO BE PACKAGED IN TRAYS UNLESS OTHERWISE SPECIFIED.
- POSITIONS -05 THRU -20 WILL HAVE ONLY ONE FRICTION LOCK.  
POSITIONS -25 THRU -40 WILL HAVE TWO FRICTION LOCKS.  
POSITIONS -45 THRU -50 WILL HAVE THREE FRICTION LOCKS.
- NOTE DELETED.
- FOR QUANTITIES UP TO 49 PIECES, NO LEADER, TRAILER, OR REEL WILL BE SUPPLIED.  
FOR QUANTITIES 50-124, NO LEADER, OR TRAILER WILL BE SUPPLIED.
- ALL SAMPLES AND/OR NO CHARGE ORDERS ARE REQUIRED TO BE PACKAGED IN SUSPENSION PACKS AND NOT T&R.
- DUE TO HIGH AMOUNT OF INSERTION FORCE NEEDED, THE -LC OPTION IS NOT COMPATIBLE WITH AUTO-PLACEMENT. SAMTEC RECOMMENDS MANUAL PLACEMENT FOR ALL ASSEMBLIES WITH THE -LC OPTION.

F:\DWG\MISC\MKTG\SEMXX-1XX-XX-XX.X-XX-D-XX-XX-MKT.SLDDRW

UNLESS OTHERWISE SPECIFIED,  
DIMENSIONS ARE IN MILLIMETERS.  
TOLERANCES ARE:  
DECIMALS ANGLES  
X.X: ±0.3 [.01] 2°  
X.XX: ±0.13 [.005]  
X.XXX: ±0.051 [.0020]

**PROPRIETARY NOTE**  
THIS DOCUMENT CONTAINS INFORMATION  
CONFIDENTIAL AND PROPRIETARY TO  
SAMTEC, INC. AND SHALL NOT BE REPRODUCED  
OR TRANSFERRED TO OTHER DOCUMENTS OR  
DISCLOSED TO OTHERS OR USED FOR ANY  
PURPOSE OTHER THAN THAT WHICH IT WAS  
OBTAINED WITHOUT THE EXPRESSED WRITTEN  
CONSENT OF SAMTEC, INC.

**MATERIAL:** DO NOT SCALE DRAWING  
INSULATOR: VECTRA E130I  
CONTACT: #25 BeCu, HALF HARD  
LOCKING CLIP: PHOS BRONZE 510  
WELD TAB: BRASS ALLOW 260, FULL HARD

SHEET SCALE: 7:1



520 PARK EAST BLVD, NEW ALBANY, IN 47150  
PHONE: 812-944-6733 FAX: 812-948-5047  
e-Mail info@SAMTEC.com code 55322

DESCRIPTION: .8MM TIGER EYE MICRO SOCKET	
DWG. NO. <b>SEMXX-1XX-XX-XX.X-XX-D-XX-XX</b>	
BY: B RAY	10-19-2007 SHEET 1 OF 3

FIG 2  
SEM-110-02-03.0-XX-D-A SHOWN

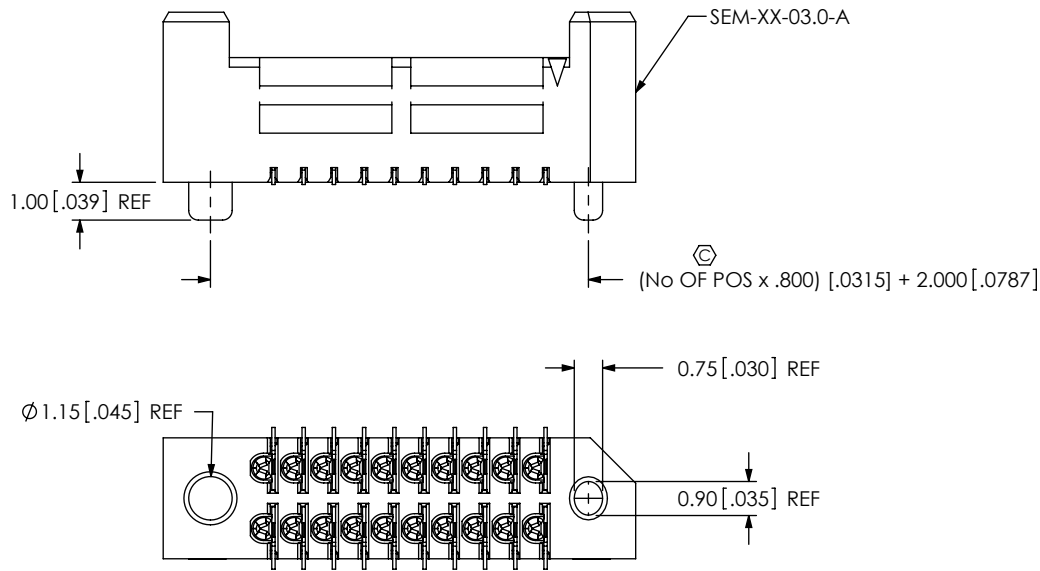


FIG 3  
SEM-110-02-03.0-XX-D-LC SHOWN

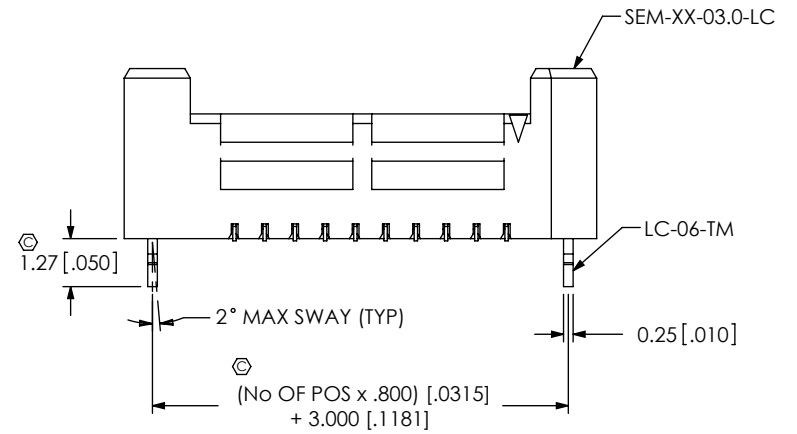
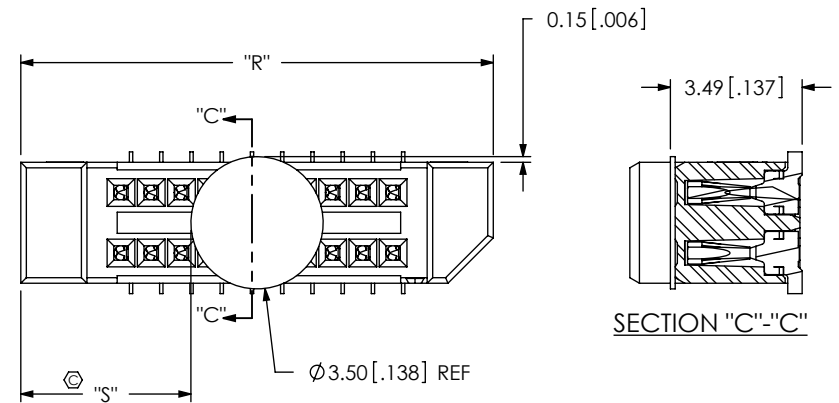
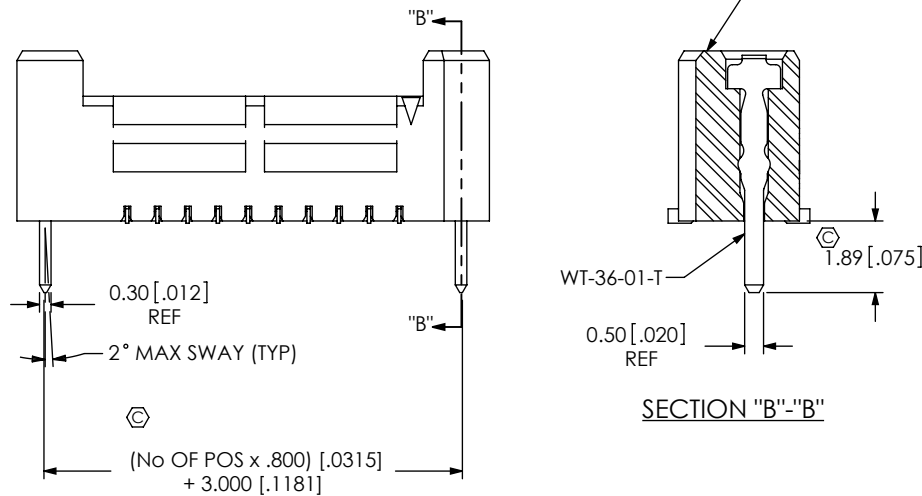


FIG 5  
SEM-110-02-03.0-XX-D-K SHOWN



NOTE: "R" = OVERALL LENGTH (REF)  
"S" =  $\{("R" - 3.51 [.138]) / 2\} \pm 0.51 [.02]$

FIG 4  
SEM-110-02-03.0-XX-D-WT SHOWN



PROPRIETARY NOTE

THIS DOCUMENT CONTAINS INFORMATION CONFIDENTIAL AND PROPRIETARY TO SAMTEC, INC. AND SHALL NOT BE REPRODUCED OR TRANSFERRED TO OTHER DOCUMENTS OR DISCLOSED TO OTHERS OR USED FOR ANY PURPOSE OTHER THAN THAT WHICH IT WAS OBTAINED WITHOUT THE EXPRESSED WRITTEN CONSENT OF SAMTEC, INC.

DO NOT SCALE DRAWING

SHEET SCALE: 5:1

**samtec**

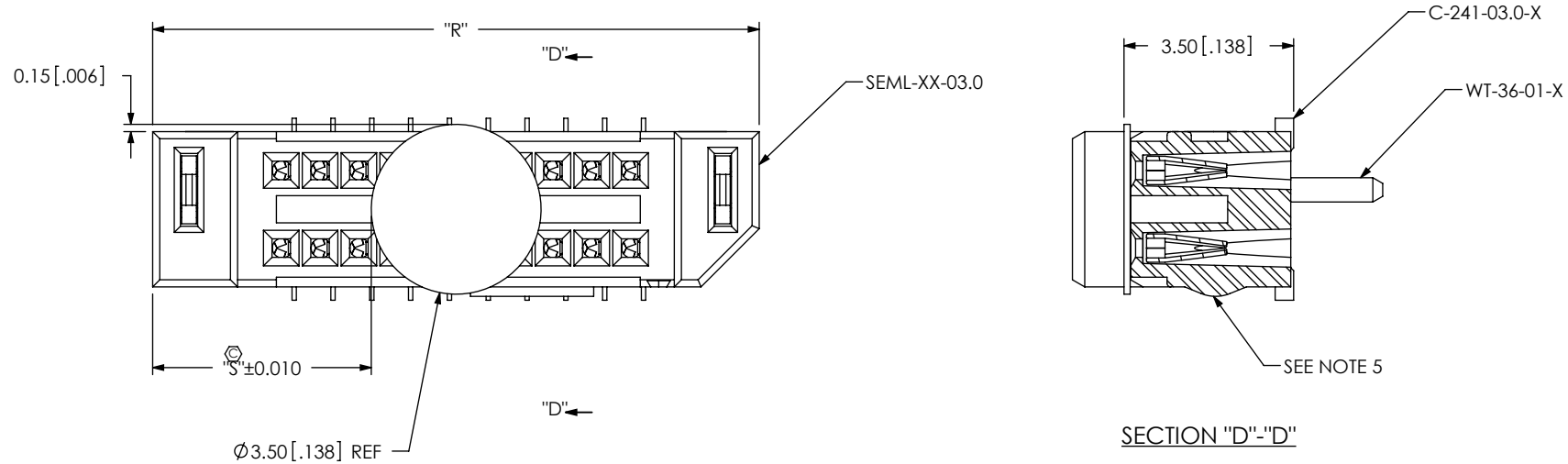
520 PARK EAST BLVD, NEW ALBANY, IN 47150  
PHONE: 812-944-6733 FAX: 812-948-5047  
e-Mail: info@SAMTEC.com code 55322

DESCRIPTION:  
.8MM TIGER EYE MICRO SOCKET

DWG. NO.  
**SEM-X-1XX-XX-XX.X-XX-D-XX-XX**

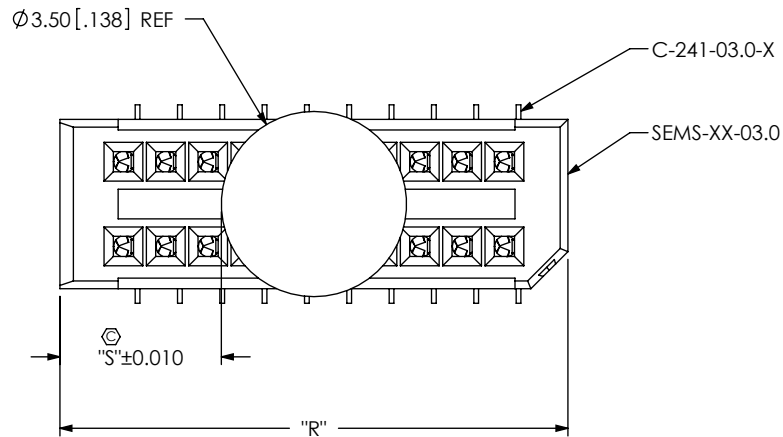
BY: B RAY 10-19-2007 SHEET 2 OF 3

FIG 6  
SEML-110-02-03.0-XX-D-WT-K SHOWN

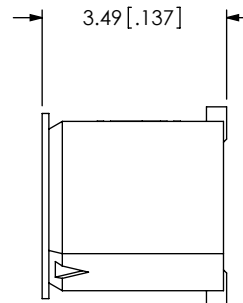


NOTE: "R" = OVERALL LENGTH (REF)  
 "S" =  $\{("R" - 3.51 [.138]) / 2\} \pm 0.51 [.02]$

FIG 7  
SEMS-110-02-03.0-XX-D-K SHOWN



NOTE: "R" =  $\{(\text{No. OF POS} \times 0.800) + 1.600\} \pm 0.05$   
 "S" =  $\{("R" - 3.51 [.138]) / 2\} \pm 0.51 [.02]$



PROPRIETARY NOTE

THIS DOCUMENT CONTAINS INFORMATION CONFIDENTIAL AND PROPRIETARY TO SAMTEC, INC. AND SHALL NOT BE REPRODUCED OR TRANSFERRED TO OTHER DOCUMENTS OR DISCLOSED TO OTHERS OR USED FOR ANY PURPOSE OTHER THAN THAT WHICH IT WAS OBTAINED WITHOUT THE EXPRESSED WRITTEN CONSENT OF SAMTEC, INC.

DO NOT SCALE DRAWING

SHEET SCALE: 7:1

**samtec**

520 PARK EAST BLVD, NEW ALBANY, IN 47150  
 PHONE: 812-944-6733 FAX: 812-948-5047  
 e-Mail info@SAMTEC.com code 55322

DESCRIPTION:  
 .8MM TIGER EYE MICRO SOCKET

DWG. NO.  
 SEMX-1XX-XX-XX.X-XX-D-XX-XX

BY: B RAY 10-19-2007 SHEET 3 OF 3