

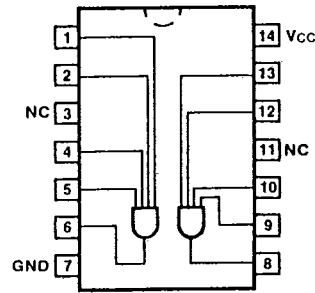
21

T-43-15

54/7421
54H/74H21
54LS/74LS21

DUAL 4-INPUT POSITIVE AND GATE

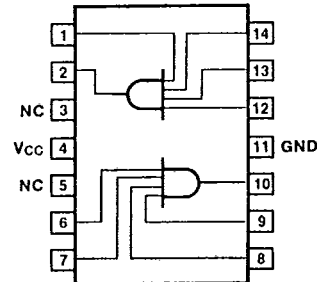
CONNECTION DIAGRAMS
PINOUT A



ORDERING CODE: See Section 9

PKGS	PIN OUT	COMMERCIAL GRADE	MILITARY GRADE	PKG TYPE
		V _{CC} = +5.0 V ±5%, T _A = 0°C to +70°C	V _{CC} = +5.0 V ±10%, T _A = -55°C to +125°C	
Plastic DIP (P)	A	7421PC, 74H21PC 74LS21PC		9A
Ceramic DIP (D)	A	7421DC, 74H21DC 74LS21DC	5421DM, 54H21DM 54LS21DM	6A
Flatpak (F)	A	7421FC, 74LS21FC	5421FM, 54LS21FM	3I
	B	74H21FC	54H21FM	

PINOUT B



INPUT LOADING/FAN-OUT: See Section 3 for U.L. definitions

PINS	54/74 (U.L.) HIGH/LOW	54/74H (U.L.) HIGH/LOW	54/74LS (U.L.) HIGH/LOW
Inputs	1.0/1.0	1.25/1.25	0.5/0.25
Outputs	20/10	12.5/12.5	10/5.0 (2.5)

DC AND AC CHARACTERISTICS: See Section 3*

SYMBOL	PARAMETER	54/74		54/74H		54/74LS		UNITS	CONDITIONS	
		Min	Max	Min	Max	Min	Max		V _{IN} = Open V _{IN} = Gnd	V _{CC} = Max Figs. 3-1, 3-5
I _{CCH}	Power Supply Current	10	20	2.4				mA		
I _{CCL}		16	32	4.4						
t _{PLH}	Propagation Delay	27	12	15				ns		
t _{PHL}		19	12	15						

*DC limits apply over operating temperature range; AC limits apply at T_A = +25°C and V_{CC} = +5.0 V.