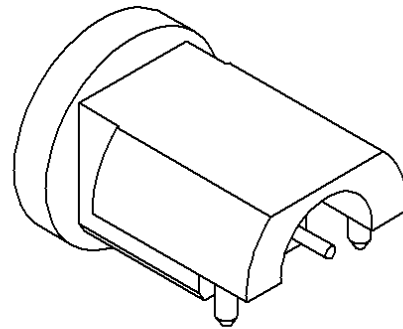
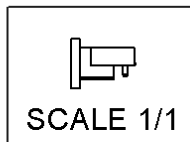
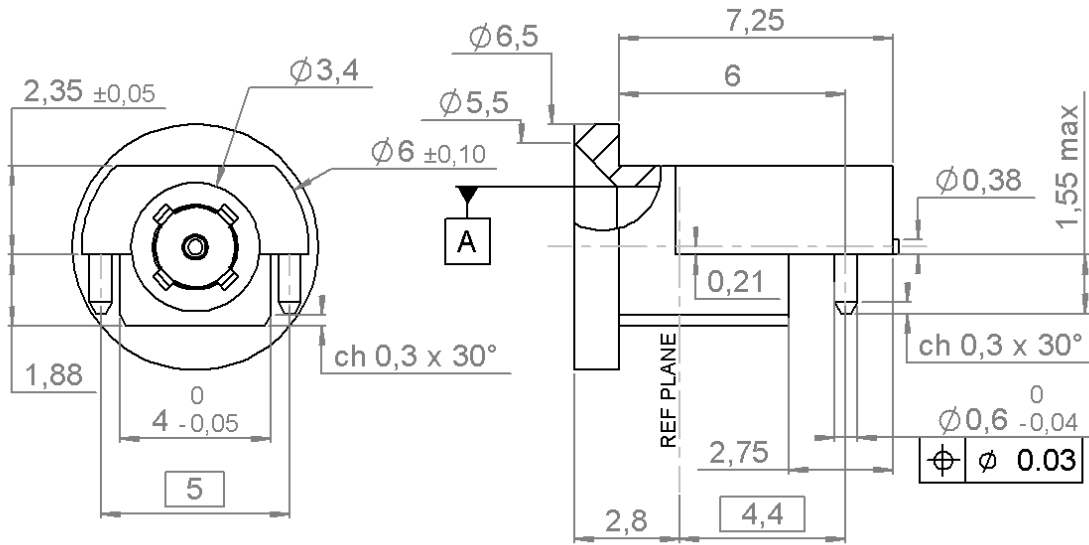


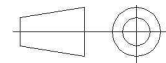
MALE STRAIGHT RECEPTACLE FOR PCB
SOLDER LEGS - CATCHER'S MITT

R222.680.710

Series : **SMP**



All dimensions are in mm.



COMPONENTS	MATERIALS	PLATING (μm)
BODY	STAINLESS STEEL	GOLD 0.5 OVER NICKEL 2
CENTER CONTACT	BERYLLIUM COPPER	GOLD 0.5 OVER NICKEL 2
OUTER CONTACT	-	-
INSULATOR	PTFE	-
GASKET	-	-
OTHERS PARTS	-	-
-	-	-
-	-	-

Issue : 1423 A

In the effort to improve our products, we reserve the right to make changes judged to be necessary.

RADIAL 

MALE STRAIGHT RECEPTACLE FOR PCB**R222.680.710****SOLDER LEGS - CATCHER'S MITT**Series : **SMP****PACKAGING**

Standard	Unit	Other
500		Contact us

SPECIFICATION**ELECTRICAL CHARACTERISTICS**

Impedance	50	Ω
Frequency	0-12	GHz
VSWR	1.25 + 0,0100	x F(GHz) Maxi
Insertion loss	0.15	$\sqrt{F}(\text{GHz})$ dB Maxi
RF leakage	- (NA)	- F(GHz)) dB Maxi
Voltage rating	335	Veff Maxi
Dielectric withstanding voltage	500	Veff mini
Insulation resistance	5000	M Ω mini

ENVIRONMENTAL

Operating temperature	-65/+165	$^{\circ}\text{C}$
Hermetic seal	NA	Atm.cm3/s
Panel leakage	NA	

OTHER CHARACTERISTICS

Assembly instruction

Others :

MECHANICAL CHARACTERISTICS

Center contact retention	
Axial force – Mating end	6.7 N mini
Axial force – Opposite end	6.7 N mini
Torque	NA N.cm mini
Recommended torque	
Mating	NA N.cm
Panel nut	NA N.cm
Mating life	1000 Cycles mini
Weight	0,8730 g

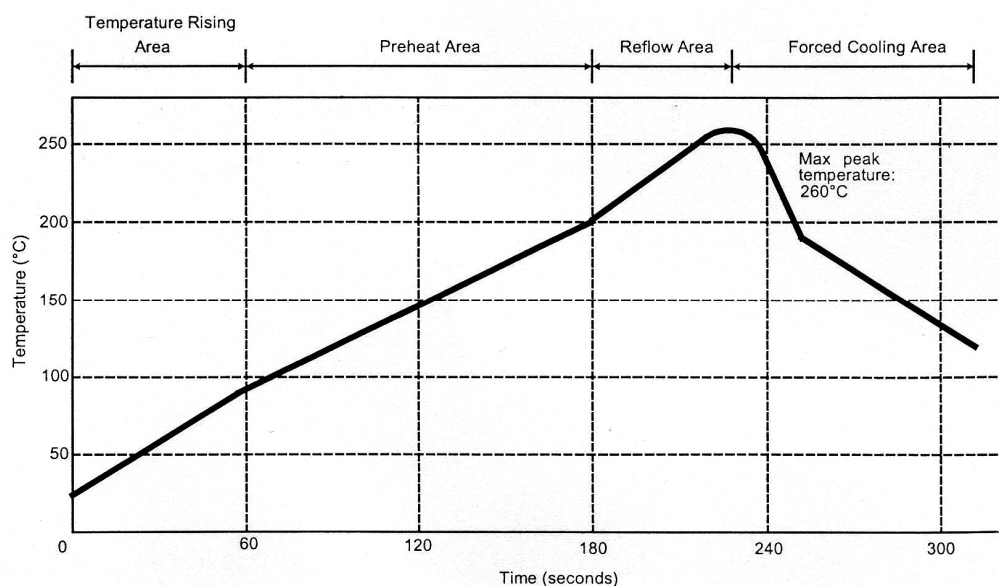
Issue : 1423 A

In the effort to improve our products, we reserve the right to make changes judged to be necessary.

RADIAL 

MALE STRAIGHT RECEPTACLE FOR PCB**R222.680.710****SOLDER LEGS - CATCHER'S MITT**Series : **SMP****SOLDER PROCEDURE**

1. Deposition of solder paste 'Sn Ag4 Cu0.5' on mounting zone by screen printing application. We recommend a low residue flux.
We advise a thickness of 150 µm. Verify that the edges of the zone are clean.
2. Placement of the receptacle on the mounting zone with an automatic machine of 'pick and place' type.
Video camera is recommended for the positioning of the component. Adhesive agents must not be used on the receptacle.
3. Soldering by infra-red reflow.
Below, please find the typical profile to use.
4. Cleaning of printed circuit boards.
5. Checking of solder joints and position of the component by visual inspection.

TEMPERATURE PROFILE

Parameter	Value	Unit
Temperature rising Area	1 - 4	°C/sec
Max Peak Temperature	260	°C
Max dwell time @260°C	10	sec
Min dwell time @235°C	20	sec
Max dwell time @235°C	60	sec
Temperature drop in cooling Area	-1 to -4	°C/sec
Max dwell time above 100°C	420	sec

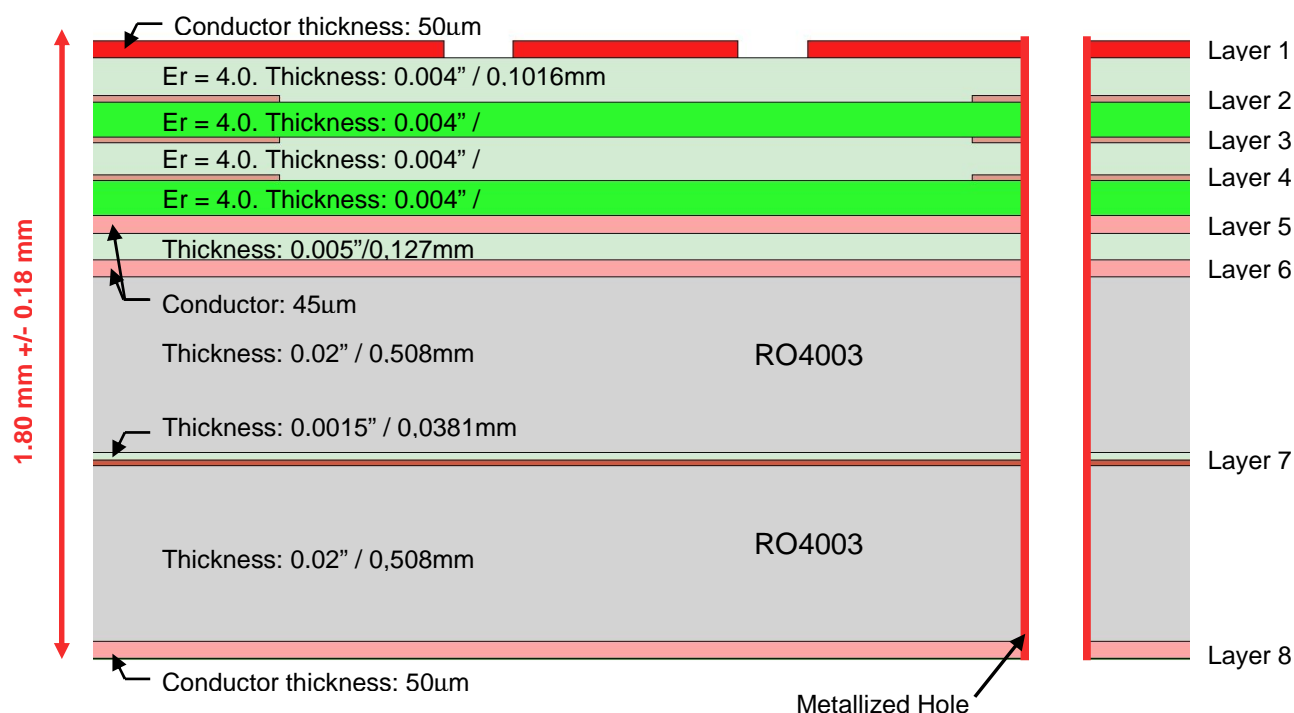
Issue : 1423 A

In the effort to improve our products, we reserve the right to make changes judged to be necessary.

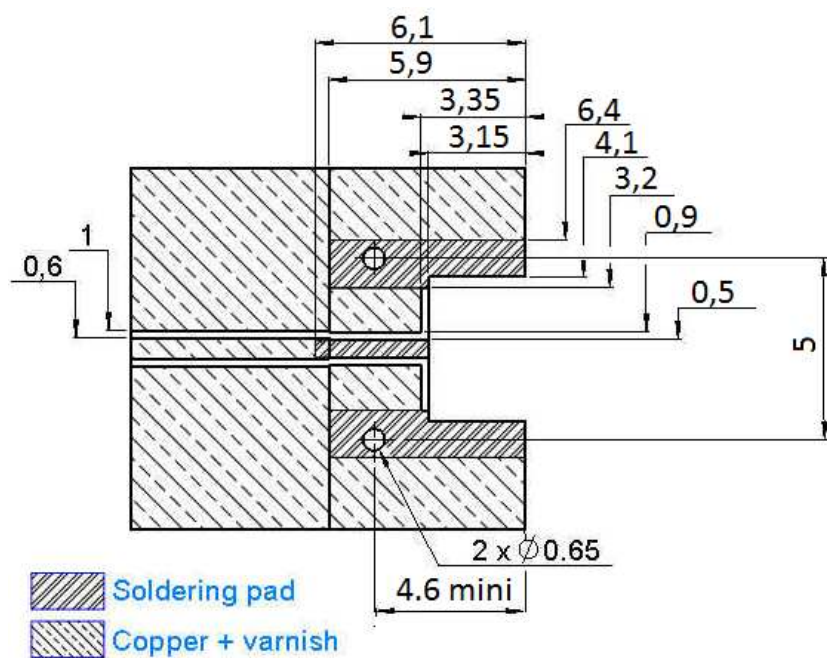
RADIAL 

MALE STRAIGHT RECEPTACLE FOR PCB**R222.680.710****SOLDER LEGS - CATCHER'S MITT**Series : **SMP****RECOMMENDED PAD DIMENSIONS:**

Substrate: add vias between both sides along upper ground plane according to engineering practise



Conductor thickness: 1/2oz./17.5µm unless specified otherwise



Issue : 1423

A

In the effort to improve our products, we reserve the right to make changes judged to be necessary.

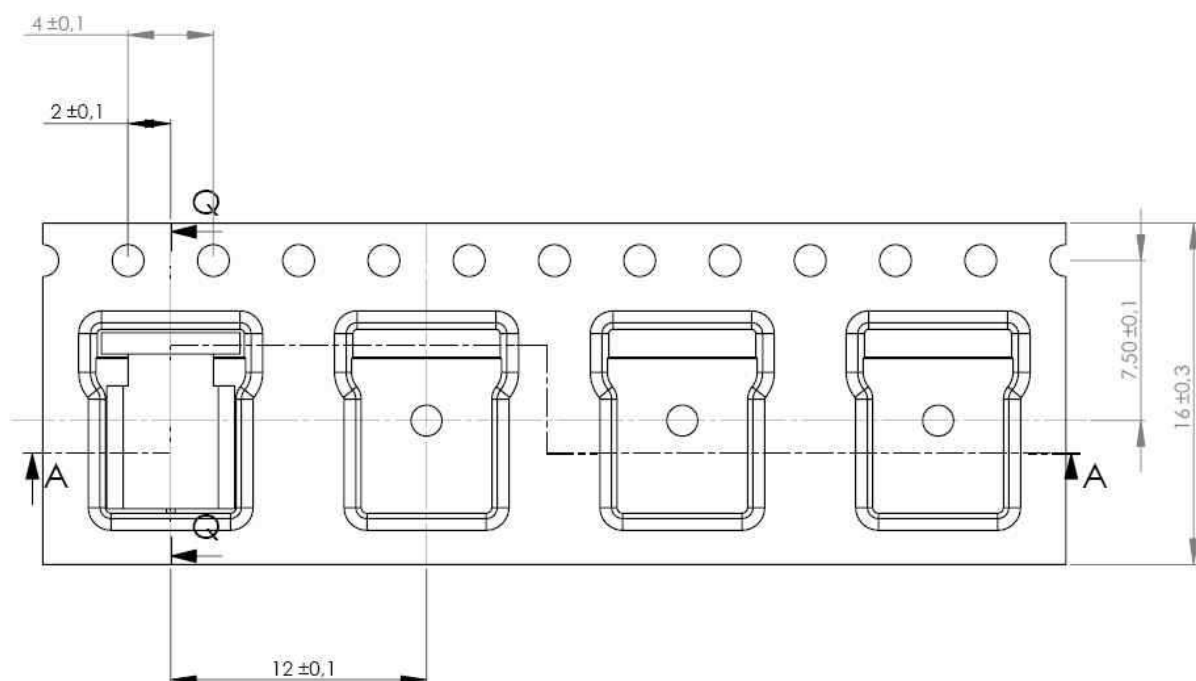
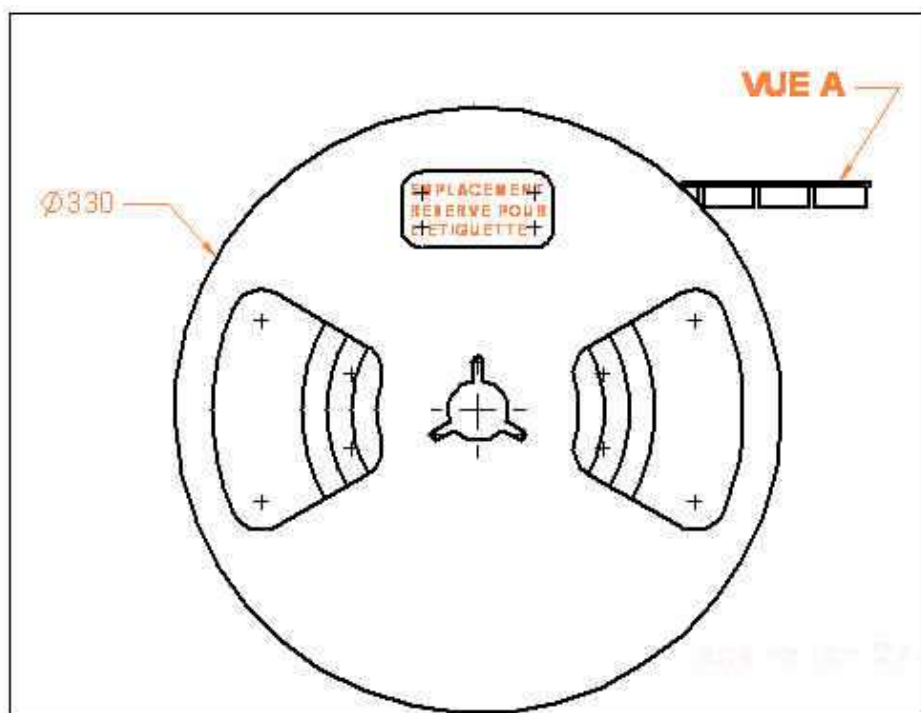
RADIAL

MALE STRAIGHT RECEPTACLE FOR PCB

SOLDER LEGS - CATCHER'S MITT

R222.680.710

Series : SMP



Issue : 1423 A

In the effort to improve our products, we reserve the right to make changes judged to be necessary.

RADIAL 