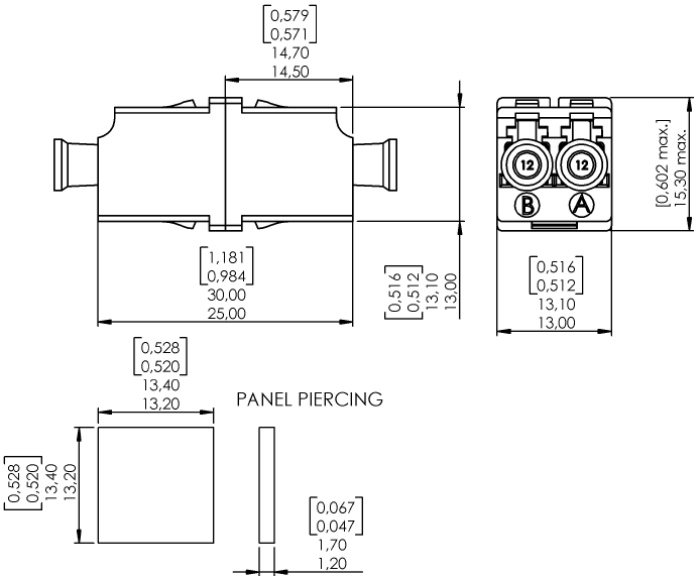


PAGE 1/1	ISSUE 04-06-13	SERIES LC	PART NUMBER F727750100
----------	----------------	-----------	------------------------



Dimensions: mm [inches]

GENERAL

Type: IEC 61754-20 (LC)  
RJ-45 latching system

Mounting: Snap-in mounting  
Max. panel thickness 1.7 mm

Alignement Sleeve: Zirconia

Color: GREEN

CHARACTERISTICS (Dependent on cable or fiber construction)

Material: Plastic molded : Material in accordance with  
TELCORDIA GR-326 CORE  
Inflammability V0 (UL 94)

Mechanical: Endurance : 200 matings  
Plug retention: 68N

Environmental: Storage temperature range: -40°C / +85°C  
Operating temperature range: -40°C / +70°C

Proof test : Straight pull: 68 N  
Side pull: 23 N

Vibration test : 10 to 55 Hz, 1,5 mm (peak to peak), 2 Hr/axis

(Performance and specification: see document GEN\_F727 001)