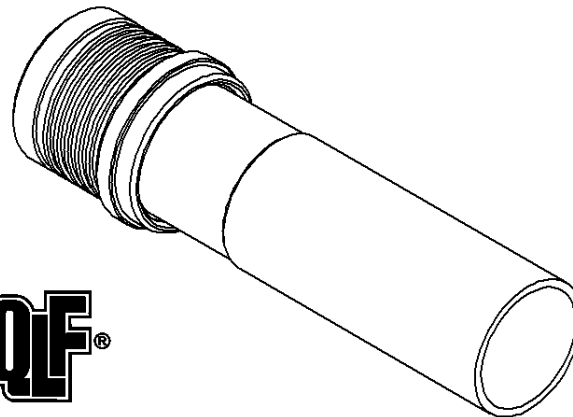
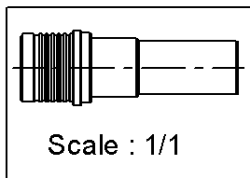
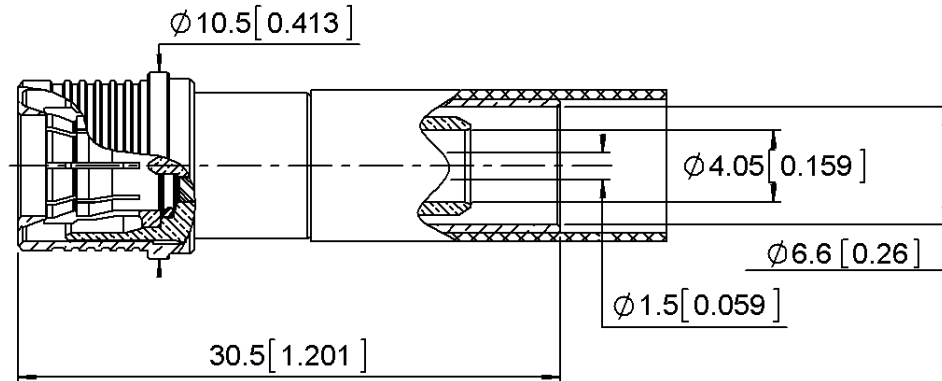


STRAIGHT PLUG CRIMP TYPE

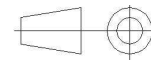
R123W.076.310

CABLE 6.1/50D

Series : WQMA



All dimensions are in mm.



COMPONENTS	MATERIALS	PLATING (μm)
BODY	BRASS.	BBR2
CENTER CONTACT	BRASS.	NPGR
OUTER CONTACT	BRASS.	BBR2
INSULATOR	PTFE	
GASKET	SILICONE RUBBER	
OTHERS PARTS	BRASS.	BBR2
-	-	-
-	-	-

Issue : 1246 A

In the effort to improve our products, we reserve the right to make changes judged to be necessary.



STRAIGHT PLUG CRIMP TYPE

R123W.076.310

CABLE 6.1/50D

Series : WQMA

PACKAGING

Standard	Unit	Other
100	'W' option	Contact us

SPECIFICATION

ELECTRICAL CHARACTERISTICS

Impedance	50	Ω
Frequency	0-6	GHz
VSWR	1.12* + 0.0000	x F(GHz) Maxi
Insertion loss	0.05	\sqrt{F} (GHz) dB Maxi
RF leakage	- (**80)	- F(GHz)) dB Maxi
Voltage rating	335	Veff Maxi
Dielectric withstanding voltage	1000	Veff mini
Insulation resistance	5000	M Ω mini

CABLE ASSEMBLY

Stripping	a	b	c	d	e	f
mm	4.20	10.0	15.0	0.00	10.8	0.00

Assembly instruction :

Recommended cable(s)

KSR240

LMR 240

AEP-240FR

Characteristics indicated on this data sheet are those that can be achieved with the highest performance cable. Intrinsic limitations of the cable may diminish the performance of the assembly

Cable retention

- pull off	220	N mini
- torque	NA	N.cm

MECHANICAL CHARACTERISTICS

Center contact retention		
Axial force – Mating end	18	N mini
Axial force – Opposite end	18	N mini
Torque	NA	N.cm mini

TOOLING

Part Number	Description	Hexagon
R282223000	CRIMPING TOOL	6.48
R282235013	CRIMPING DIES	6.48
R282293000	CRIMPING TOOL M22520/5-01	

Recommended torque		
Mating	NA	N.cm
Panel nut	NA	N.cm
Clamp nut	NA	N.cm
A/F clamp nut	0.0000	mm

Mating life	100	Cycles mini
Weight	7.6500	g

OTHER CHARACTERISTICS

*VSWR: 1.12 max@0-3GHz, 1.2 max@3-6GHz

**RF: leakage(interf.): 3<F<6<GHz:<-70dB

IP68(IEC60529) mated condition

ENVIRONMENTAL

Operating temperature	-40/+105	$^{\circ}$ C
Hermetic seal	NA	Atm.cm3/s
Panel leakage	NA	

Issue : 1246 A

In the effort to improve our products, we reserve the right to make changes judged to be necessary.



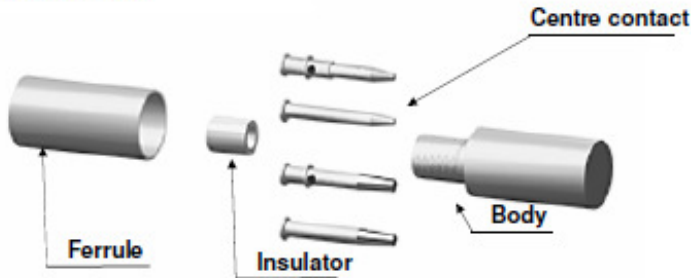
STRAIGHT PLUG CRIMP TYPE

R123W.076.310

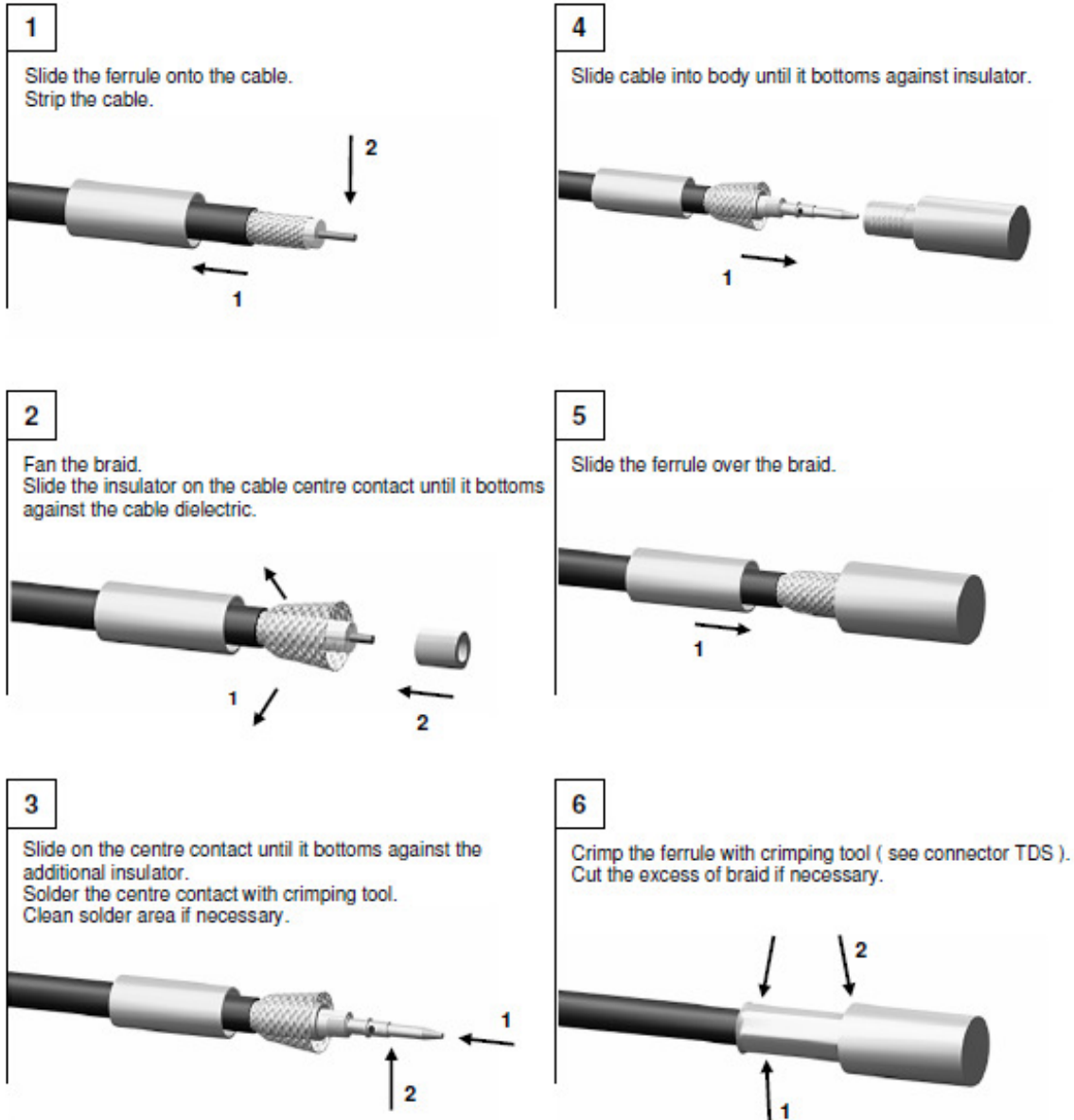
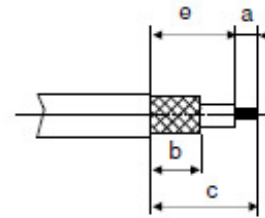
CABLE 6.1/50D

Series : WQMA

COMPONENTS



STRIPPING DIMENSIONS



Issue : 1246 A

In the effort to improve our products, we reserve the right to make changes judged to be necessary.

