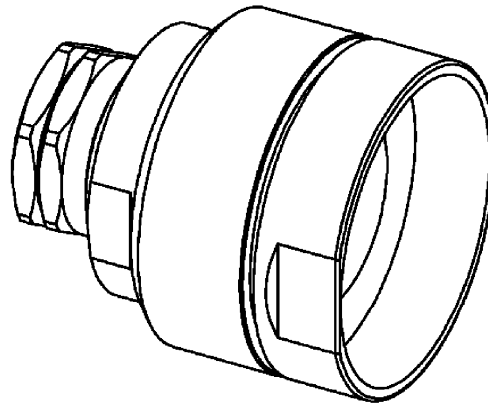
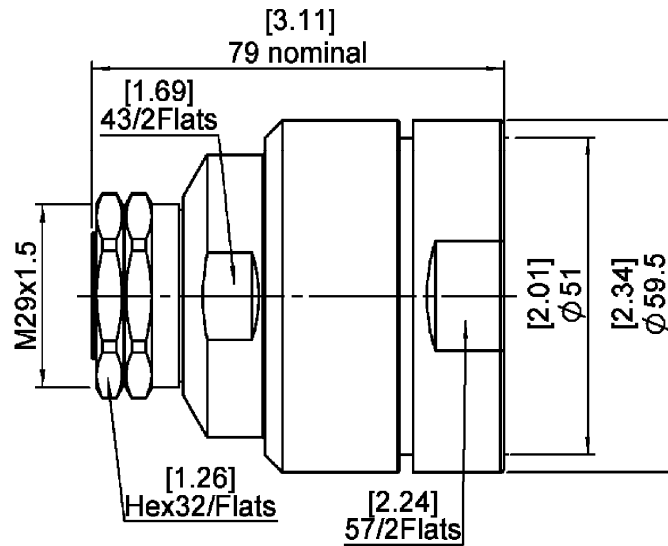
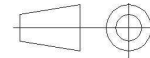


STRAIGHT PLUG EZ FIT TYPE
1 5/8" CORRUGATED CABLE
R185A.037.020

Series : ECO 7/16



All dimensions are in mm.



COMPONENTS	MATERIALS	PLATING (µm)
BODY	BRASS	BBR
CENTER CONTACT	BRASS	SILVER
OUTER CONTACT		
INSULATOR	PTFE	
GASKET	SILICONE RUBBER	
OTHERS PARTS	BRASS	BBR
-	-	-
-	-	-

Issue : 0926 A

In the effort to improve our products, we reserve the right to make changes judged to be necessary.

RADIAL 

STRAIGHT PLUG EZ FIT TYPE**1 5/8" CORRUGATED CABLE****R185A.037.020**

Series : ECO 7/16

PACKAGING

Standard	Unit	Other
1	-	Contact us

ELECTRICAL CHARACTERISTICS

Impedance	50	Ω
Frequency	0-3	GHz
VSWR	1.1 + 0.000	x F(GHz) Maxi
Insertion loss	0.05	$\sqrt{F(\text{GHz})}$ dB Maxi
RF leakage	- (NA)	- F(GHz)) dB Maxi
Voltage rating	2000	Veff Maxi
Dielectric withstanding voltage	4000	Veff mini
Insulation resistance	10000	M Ω mini

MECHANICAL CHARACTERISTICS

Center contact retention		
Axial force – Mating end	200	N mini
Axial force – Opposite end	100	N mini
Torque	NA	N.cm mini

Recommended torque

Mating	3500	N.cm
Panel nut	NA	N.cm
Clamp nut	2500	N.cm
A/F clamp nut	57.000	mm

Mating life	100	Cycles mini
Weight	572.000	g

ENVIRONMENTAL

Operating temperature	-40/+85	° C
Hermetic seal	NA	Atm.cm3/s
Panel leakage	NA	

SPECIFICATION**CABLE ASSEMBLY**

Stripping	a	b	c	d	e	f
mm	31.0	0.00	0.00	0.00	0.00	0.00

Assembly instruction :

Recommended cable(s)

LDF7-50A - 1-5/8"

LCF 1-5/8"Cu2Y

Characteristics indicated on this data sheet are those that can be achieved with the highest performance cable. Intrinsic limitations of the cable may diminish the performance of the assembly

Cable retention

- pull off	500	N mini
- torque	NA	N.cm

TOOLING

Part Number	Description	Hexagon
.	.	.

OTHER CHARACTERISTICS

Watertightness:IP67

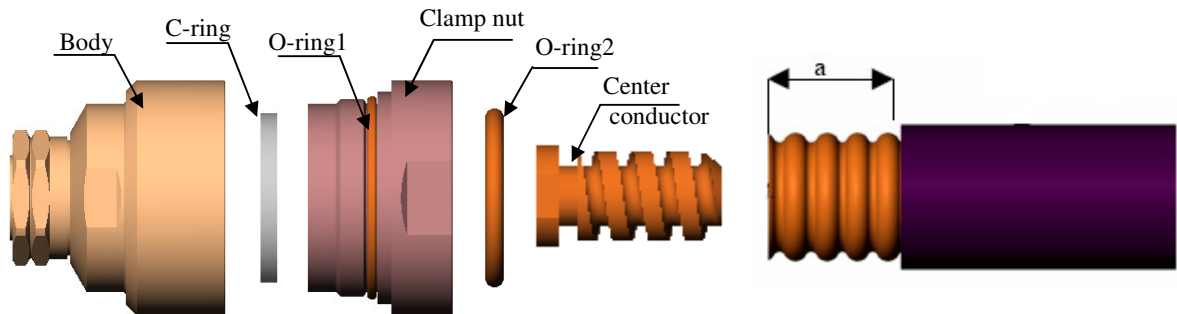
Issue : 0926 A

In the effort to improve our products, we reserve the right to make changes judged to be necessary.


RADIAL

STRAIGHT PLUG EZ FIT TYPE
1 5/8" CORRUGATED CABLE
R185A.037.020

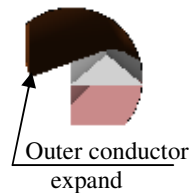
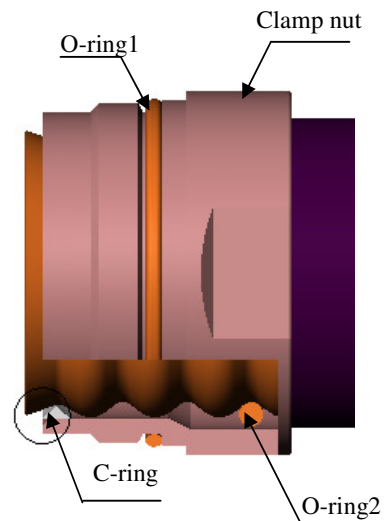
Series : ECO 7/16


1) STRIPPING OF THE SHEAT

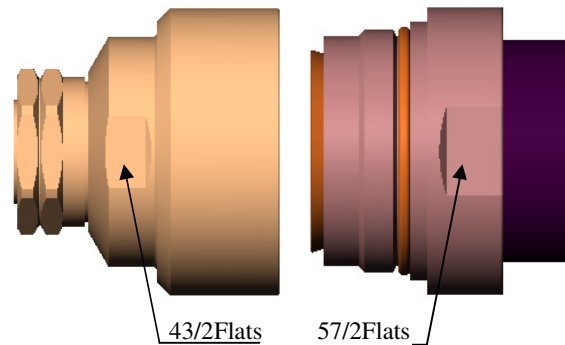
- Strip the cable .
- Do not damage the outer conductor .
- Remove impurities such as copper scrap and burr on the end surface of the cable.

2) CABLE MOUNTING

- Put the O-ring2 and C-ring in the trough of the cable.
- Mount the clamp nut on the cable, expand outer conductor from dielectric
- Screw center conductor into the hole of cable center using wrench.


3) MOUNTING CABLE

- Mount the clamp nut with the cable in the body of the connector.
- Couple of tightening recommended: 2500N.cm


Issue : 0926 A

In the effort to improve our products, we reserve the right to make changes judged to be necessary.

RADIAL