

## STRAIGHT JACKS, CLAMP TYPE, FOR FLEXIBLE CABLES

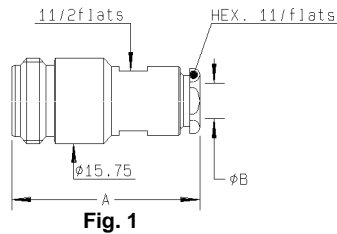
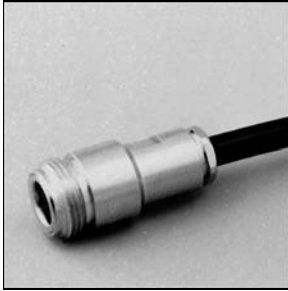


Fig. 1

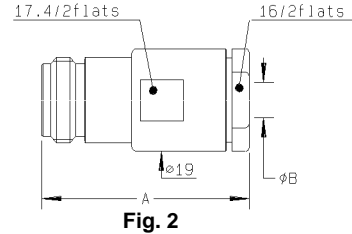


Fig. 2

Cable group	Part number	Fig.	Dimensions (mm)		Captured center contact	Assembly instructions
			A	B		
5 / 50 / S + D	<b>R161 206 000</b>	1	35.3	5.6	yes	M03
10 + 11 / 50 / S + D	<b>R161 220 000</b>	2	39.3	11.2	yes	M05
10 + 11 / 50 + 75 / S + D	<b>R161 222 000</b>	2	39.3	11.2	yes	M05

## STRAIGHT JACKS, EZ FIT TYPE, FOR CORRUGATED CABLES

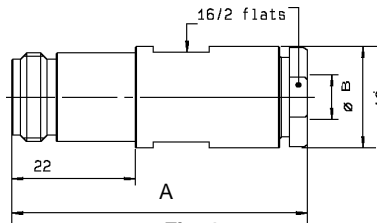


Fig. 1

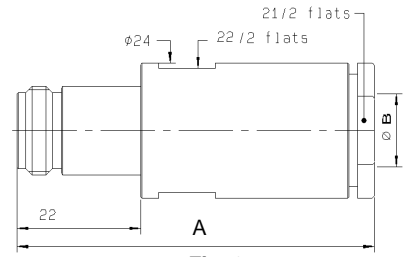


Fig. 2

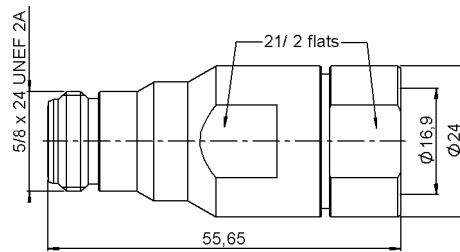


Fig. 3

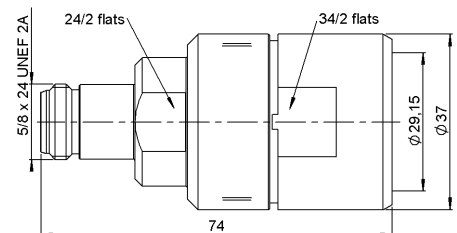


Fig. 4

Cable group	Part number	Fig.	Dimensions (mm)		Captured center contact	Assembly instructions
			A	B		
1/4" superflexible corrugated	<b>R161 232 007</b>	1	52.7	7.9	yes	M18
3/8" superflexible corrugated	<b>R161 232 207</b>	2	66	11	yes	M18
1/2" superflexible corrugated	<b>R161 232 407</b>	2	66	14	yes	M18
1/2" flexible corrugated	<b>R161 230 320W</b>	3			yes	M21
7/8" flexible corrugated	<b>R161 231 020W</b>	4			yes	M22