



STRAIGHT PLUGS, FULL CRIMP TYPE, FOR FLEXIBLE CABLES (single piece body)

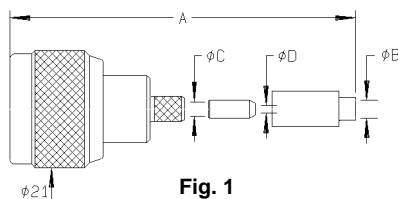


Fig. 1

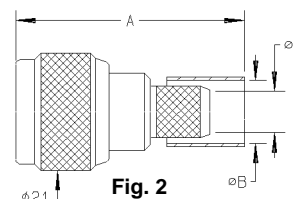


Fig. 2

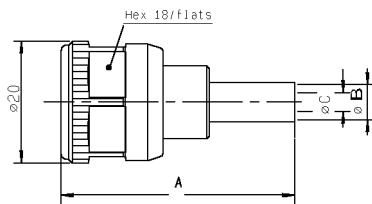


Fig. 3

Cable group	Part number	Fig.	Dimensions (mm)				Captured center contact	Assembly instructions	Note
			A	B	C	D			
2.6 / 50 / S+D	R161 072 000	1	39.7	3.25	3.38	1.63	yes	M09	
5 / 50 / S	R161 082 000	2	38.5	5.41	3.11		yes	M12	
5 / 50 / D	R161 083 000	2	38.5	5.8	3.11		yes	M12	
5 / 50 / D	R161 083 137	3	38.5	5.8	3.11		yes	M11	For intermodulation application / tool
10 / 50 / S	R161 075 000	2	40.2	11.05	7.46		yes	M10	
10.3 / 50 / S	R161 075 060	2	40.2	11.05	7.46		yes	M10	LMR 400 cable
10.3 / 50 / D	R161 076 000	2	40.2	11.4	6.4		yes	M10	ETHERNET cable
11 / 50 / D	R161 088 000	2	40.2	11.4	7.46		yes	M10	
11 / 50 / D	R161 088 137	3						M11	For intermodulation application / tool

STRAIGHT PLUGS, CLAMP TYPE, FOR FLEXIBLE CABLES

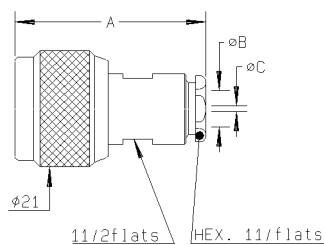


Fig. 1

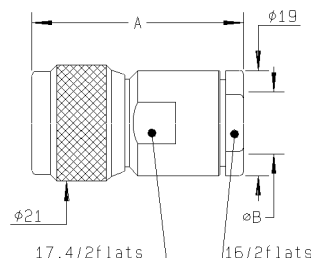


Fig. 2

Cable group	Part number	Fig.	Dimensions (mm)			Captured center contact	Assembly instructions
			A	B	C		
2.6 / 50 / S + D	R161 004 000	1	33.9	3.1	1.7	yes	M01
5 / 50 / S + D	R161 006 000	1	34.4	5.6		no	M02
5 / 50 / S + D	R161 010 000	1	34.9	5.6		yes	M03
10 + 11 / 50 / S + D	R161 020 000	2	38.1	11.2		no	M04
10 + 11 / 50 / S + D	R161 022 000	2	38.9	11.2		yes	M05