

STRAIGHT FLANGE RECEPTACLE (MALE CENTER CONTACT)

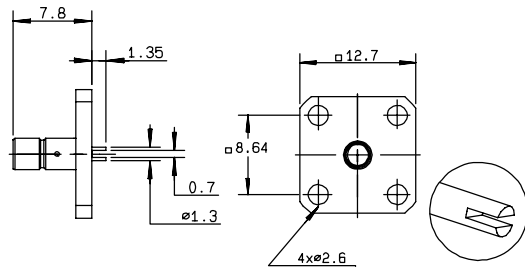


Fig. 1

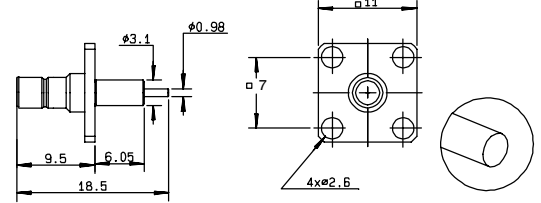


Fig. 2

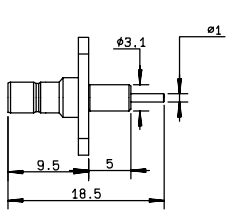


Fig. 3

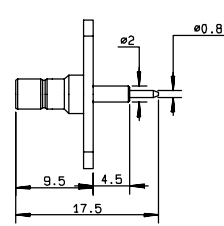
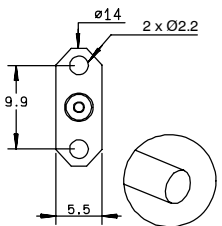


Fig. 4

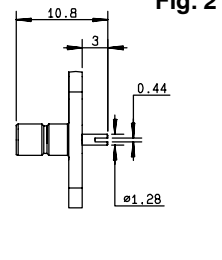
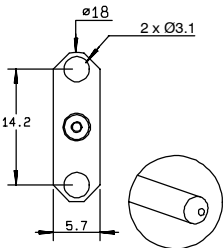
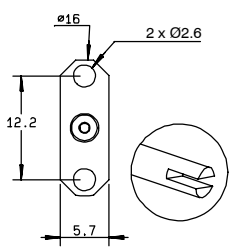


Fig. 5



part number	fig.	captive center contact	panel	finish	note
R114 409 030●	1	yes	P14	Gold	square flange
R114 413 000	2	no	P07	Gold	square flange / extended dielectric
R114 450 000*●	3	no	P15	Gold	2 hole flange / extended dielectric
R114 450 205*●	4	yes	P16	nickel	2 hole flange / flange dimensions of BMA series (1)
R114 453 307*●	5	yes	P08	BBR	flange dimensions of SMA series (2) / 2 hole flange / slotted contact

(1) Ask for our catalog D1 128 CE

(2) Ask for our catalog D1 125 CE

STRAIGHT ROUND FLANGE RECEPTACLE (MALE CENTER CONTACT)

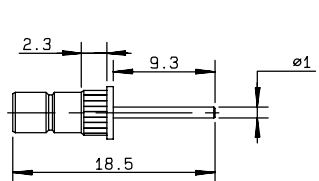


Fig. 1

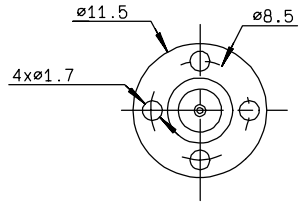
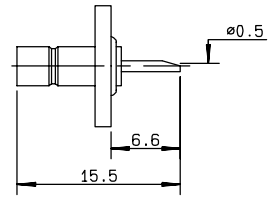


Fig. 2



part number	fig.	captive center contact	panel	finish	note
R114 505 220●	1	yes	P17	nickel	press mount/package 500
R114 510 000*●	2	yes	P18	Gold	hermetically sealed

● upon request

* packaging: unit