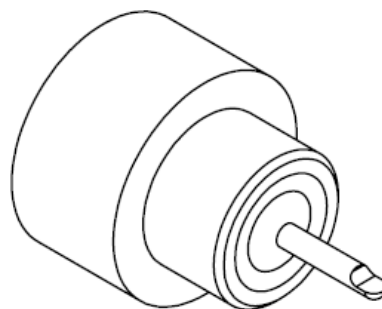
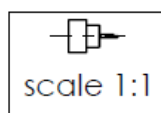
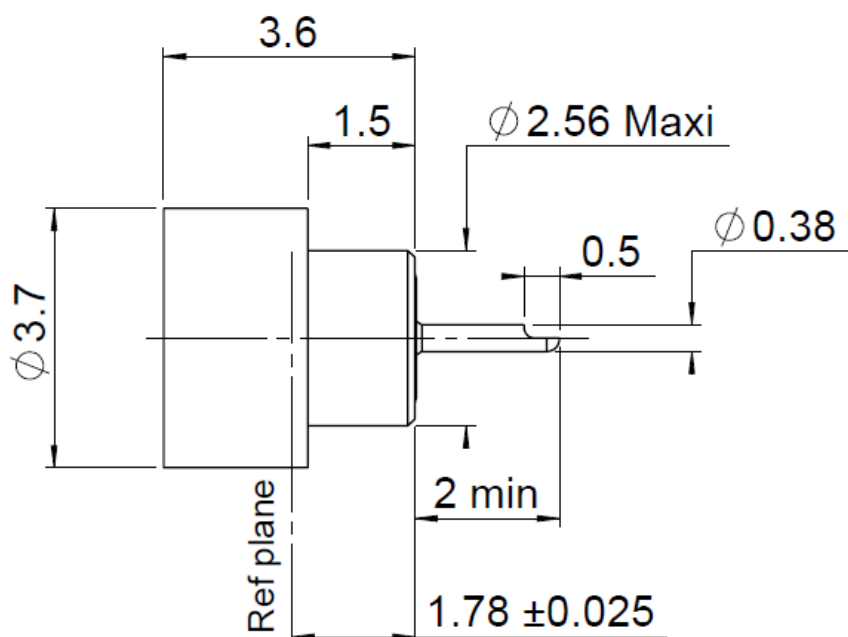


PAGE 1/2

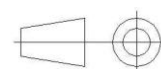
ISSUE 21-12-15B

SERIES **SMP**

PART NUMBER **R222645360**



All dimensions are in mm.



COMPONENTS	MATERIALS	PLATING (μm)
Body	<b>DILVER P1</b>	<b>GOLD OVER NICKEL</b>
Center contact	<b>DILVER P1</b>	<b>GOLD OVER NICKEL</b>
Outer contact		
Insulator	<b>GLASS</b>	
Gasket		
Others parts		
-	-	-
-	-	-

PAGE 2/2

ISSUE **21-12-15B**

SERIES **SMP**

PART NUMBER **R222645360**

## PACKAGING

Standard	Unit	Other
<b>100</b>	<b>Contact us</b>	<b>Contact us</b>

## ELECTRICAL CHARACTERISTICS

Impedance		<b>50</b>	$\Omega$
Frequency		<b>0-40</b>	GHz
VSWR	<b>1.15</b>	<b>+</b>	<b>0.0000</b> x F(GHz) Maxi
Insertion loss		<b>0.12</b>	$\sqrt{F}$ (GHz) dB Maxi
RF leakage	- (		- F(GHz)) dB Maxi
Voltage rating		<b>335</b>	Veff Maxi
Dielectric withstanding voltage		<b>500</b>	Veff mini
Insulation resistance		<b>5000</b>	M $\Omega$ mini

## ENVIRONMENTAL

Operating temperature	<b>-55/+125</b>	$^{\circ}\text{C}$
Hermetic seal	<b>10-8</b>	Atm.cm3/s
Panel leakage	<b>NA</b>	

## MECHANICAL CHARACTERISTICS

Center contact retention			
Axial force – Mating End		<b>6.8</b>	N mini
Axial force – Opposite end		<b>6.8</b>	N mini
Torque		<b>NA</b>	N.cm mini
Recommended torque			
Mating		<b>NA</b>	N.cm
Panel nut		<b>NA</b>	N.cm
Mating life		<b>100</b>	Cycles mini
Weight		<b>0.1100</b>	g

## SPECIFICATION

## OTHER CHARACTERISTICS

Assembly instruction:

Others:  
to 18GHz