

PAGE **1/2**

ISSUE **05.06.15**

SERIE : **SPDT ZC**

PART NUMBER : **R585472200**

RF CHARACTERISTICS

Frequency range : **0 - 18 GHz**
Impedance : **50 Ohms**

| Frequency (GHz) | DC - 3 | 3 - 8 | 8 - 12.4 | 12.4 - 18 |
|--------------------|----------------|----------------|----------------|----------------|
| VSWR max | 1.20 | 1.30 | 1.40 | 1.50 |
| Insertion loss max | 0.20 dB | 0.30 dB | 0.40 dB | 0.50 dB |
| Isolation min | 80 dB | 70 dB | 60 dB | 60 dB |
| Average power (*) | 240 W | 150 W | 120 W | 100 W |

ELECTRICAL CHARACTERISTICS

Actuator : **NORMALLY OPEN**
Nominal current ** : **250 mA**
Actuator voltage (Vcc) : **12V (10.2 to 13V) / NEGATIVE COMMON**
Terminals : **solder pins (250°C max. / 30 sec.)**

MECHANICAL CHARACTERISTICS

Connectors : **SMA female per MIL-C 39012**
Life : **2 million cycles**
Switching Time*** : **< 10 ms**
Construction : **Splashproof**
Weight : **< 100 g**

ENVIRONMENTAL CHARACTERISTICS

Operating temperature range : **-40°C to +85°C**
Storage temperature range : **-55°C to +85°C**

(* Average power at 25°C per RF Path)

(** At 25° C ±10%)

(*** Nominal voltage ; 25° C)



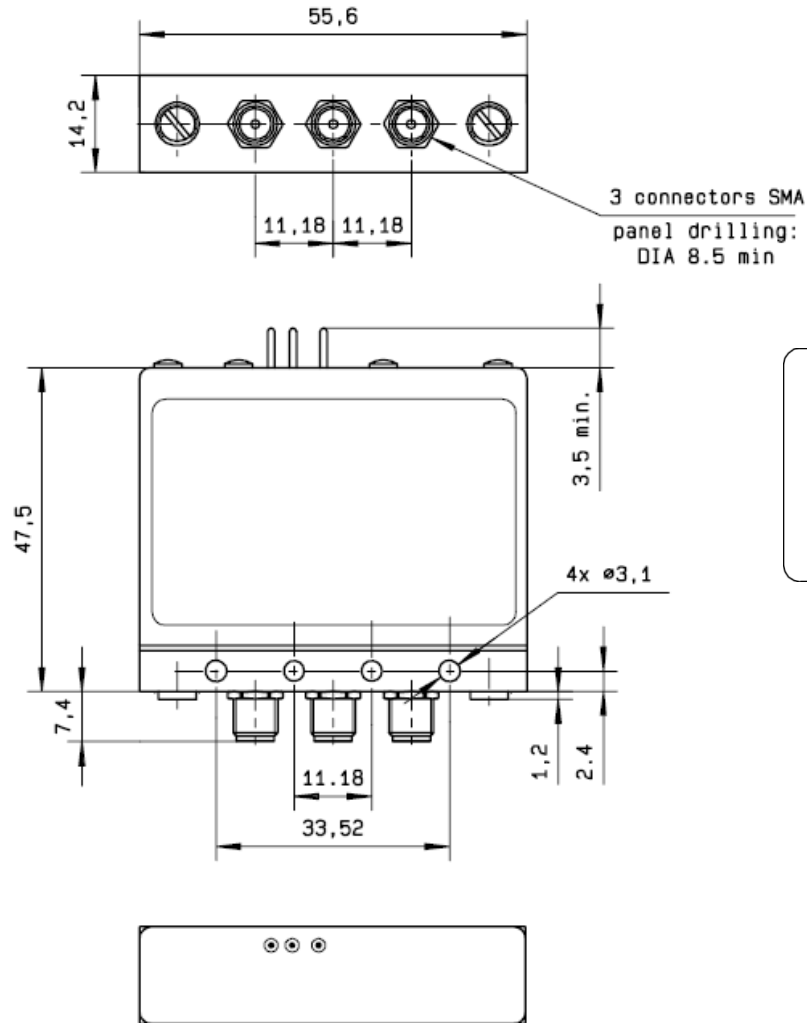
PAGE 2/2

ISSUE 05.06.15

SERIE : SPDT ZC

PART NUMBER : **R585472200**

DRAWING



LABEL

+2 +1 -C 0 - 18 GHz
Un : 12V

RADIALL®
R585472200
Lot : _ _ _ _

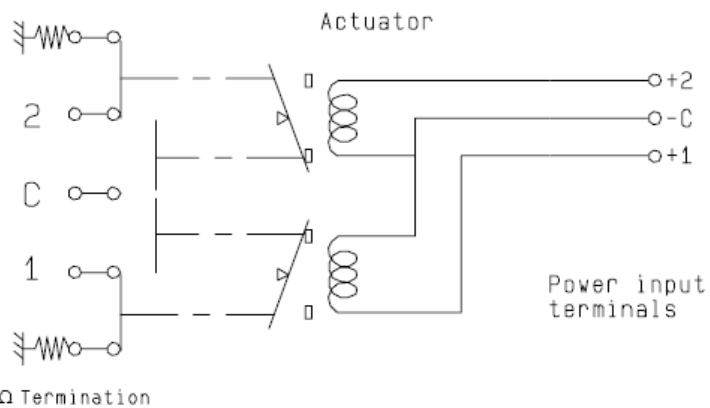
2 C 1

General tolerances : ± 0.5 mm

SCHEMATIC DIAGRAM

RF input

50 Ω Termination



| Voltage | RF Continuity |
|--------------|---|
| -C +1 | C \leftrightarrow 1 / 2 \leftrightarrow 50 Ω |
| -C +2 | C \leftrightarrow 2 / 1 \leftrightarrow 50 Ω |
| De-energized | 1 \leftrightarrow 50 Ω / 2 \leftrightarrow 50 Ω |