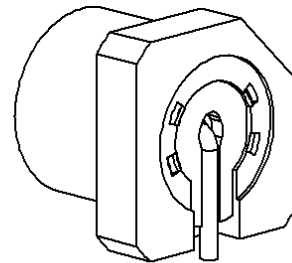
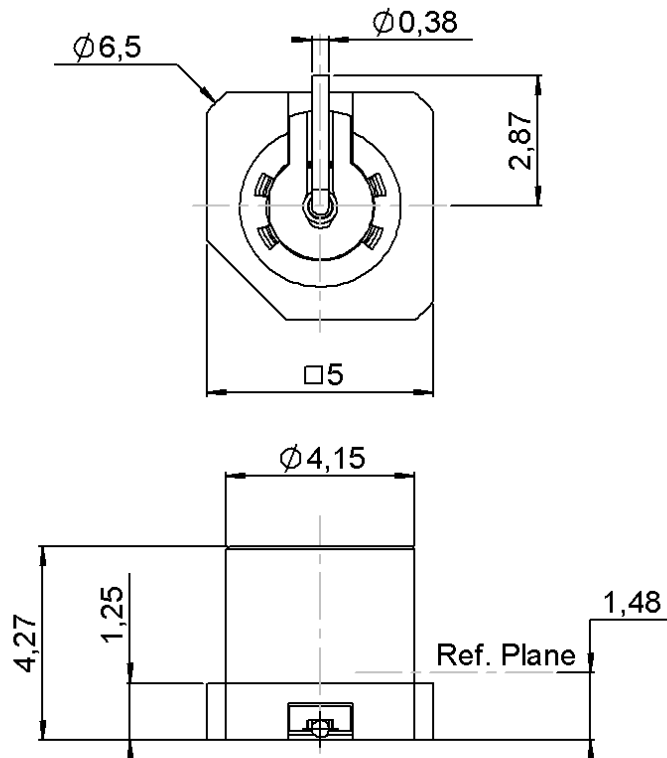


STRAIGHT MALE RECEPTACLE SMT

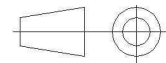
FULL DETENT TAPE AND REEL 100

R222.941.130

Series : SMP-COM



All dimensions are in mm.



COMPONENTS	MATERIALS	PLATING (μm)
BODY	BRASS	NPGR
CENTER CONTACT	BRASS	NPGR
OUTER CONTACT	-	-
INSULATOR	PEEK	-
GASKET	-	-
OTHERS PARTS	-	-
-	-	-
-	-	-

Issue : 1121 A

In the effort to improve our products, we reserve the right to make changes judged to be necessary.

RADIAL 

STRAIGHT MALE RECEPTACLE SMT**R222.941.130****FULL DETENT TAPE AND REEL 100**Series : **SMP-COM****PACKAGING**

Standard	Unit	Other
100	'W' option	Contact us

SPECIFICATION**ELECTRICAL CHARACTERISTICS**

Impedance	50	Ω
Frequency	0-12.4*	GHz
VSWR	1.1** + 0,0000	x F(GHz) Maxi
Insertion loss	0.12	$\sqrt{F}(\text{GHz})$ dB Maxi
RF leakage	- (NA)	- F(GHz)) dB Maxi
Voltage rating	335	Veff Maxi
Dielectric withstanding voltage	500	Veff mini
Insulation resistance	5000	M Ω mini

ENVIRONMENTAL

Operating temperature	-55/+125	$^{\circ}\text{C}$
Hermetic seal	NA	Atm.cm3/s
Panel leakage	NA	

OTHER CHARACTERISTICS

Assembly instruction	NA
----------------------	-----------

Others :

* ROS 1.35 at 12.4GHz

**ROS at 6GHz

MECHANICAL CHARACTERISTICS

Center contact retention	
Axial force – Mating end	6.8 N mini
Axial force – Opposite end	6.8 N mini
Torque	NA N.cm mini
Recommended torque	
Mating	NA N.cm
Panel nut	NA N.cm
Mating life	100 Cycles mini
Weight	0,3350 g

Issue : 1121 A

In the effort to improve our products, we reserve the right to make changes judged to be necessary.

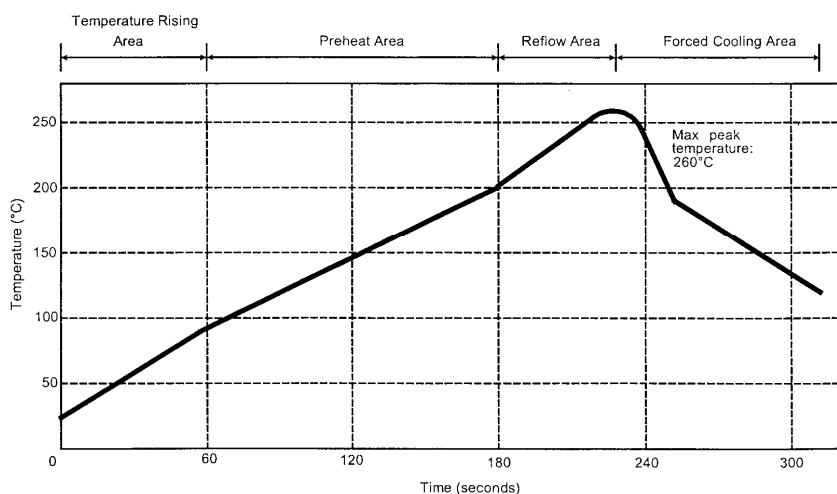
RADIAL 

STRAIGHT MALE RECEPTACLE SMT**FULL DETENT TAPE AND REEL 100****R222.941.130**

Series : SMP-COM

SOLDER PROCEDURE

1. Deposit solder paste 'SnAg4Cu0.5' on mounting zone by screen printing application. We recommend a low residue flux.
We advise a thickness of 150 micromm (5.850 microinch). Verify that the edges of the zone are clean.
2. Placement of the receptacle on the mounting zone with an automatic machine of 'pick and place' type. A video camera is recommended for positioning of the component . Adhesive agents must not be used on the receptacle.
3. This process of soldering has been tested with convection oven .Below please find ,the typical profile to use.
4. The cleaning of printed circuit boards is not obliged .
5. Verification of solder joints and position of the component by visual inspection.

TEMPERATURE PROFILE

Parameter	Value	Unit
Temperature rising Area	1 - 4	°C/sec
Max Peak Temperature	260	°C
Max dwell time @260°C	10	sec
Min dwell time @235°C	20	sec
Max dwell time @235°C	60	sec
Temperature drop in cooling Area	-1 to - 4	°C/sec
Max dwell time above 100°C	420	sec

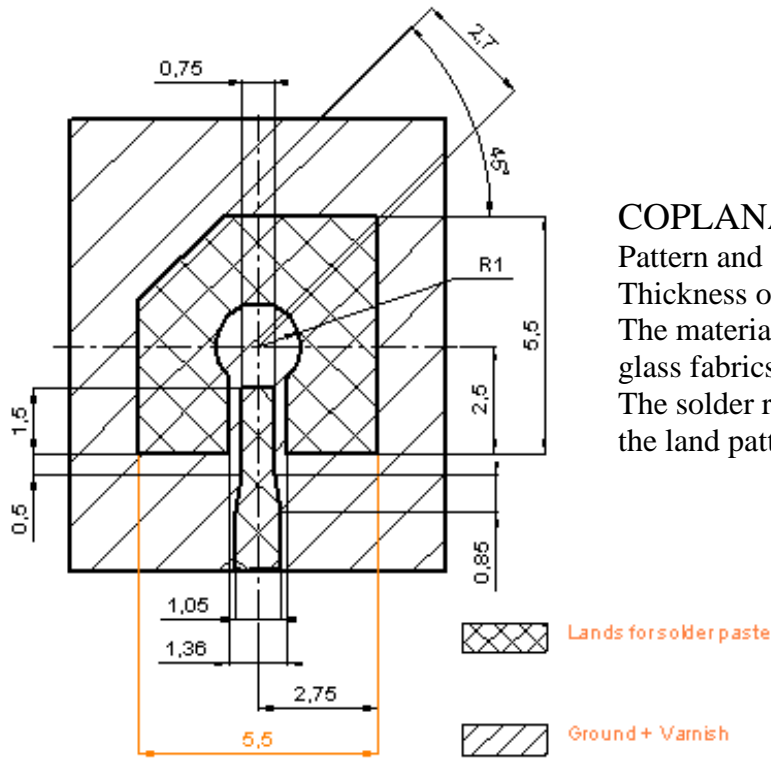
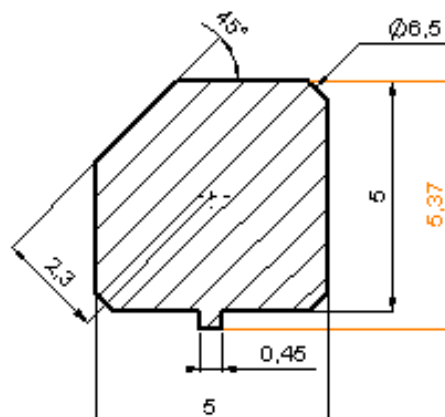
Issue : 1121 A

In the effort to improve our products, we reserve the right to make changes judged to be necessary.

RADIAL 

STRAIGHT MALE RECEPTACLE SMT**FULL DETENT TAPE AND REEL 100****R222.941.130**

Series : SMP-COM

STANDARD PAD(For ROGERS 4350)**SHADOW OF RECEPTACLE FOR VIDEO CAMERA****Issue : 1121 A**

In the effort to improve our products, we reserve the right to make changes judged to be necessary.

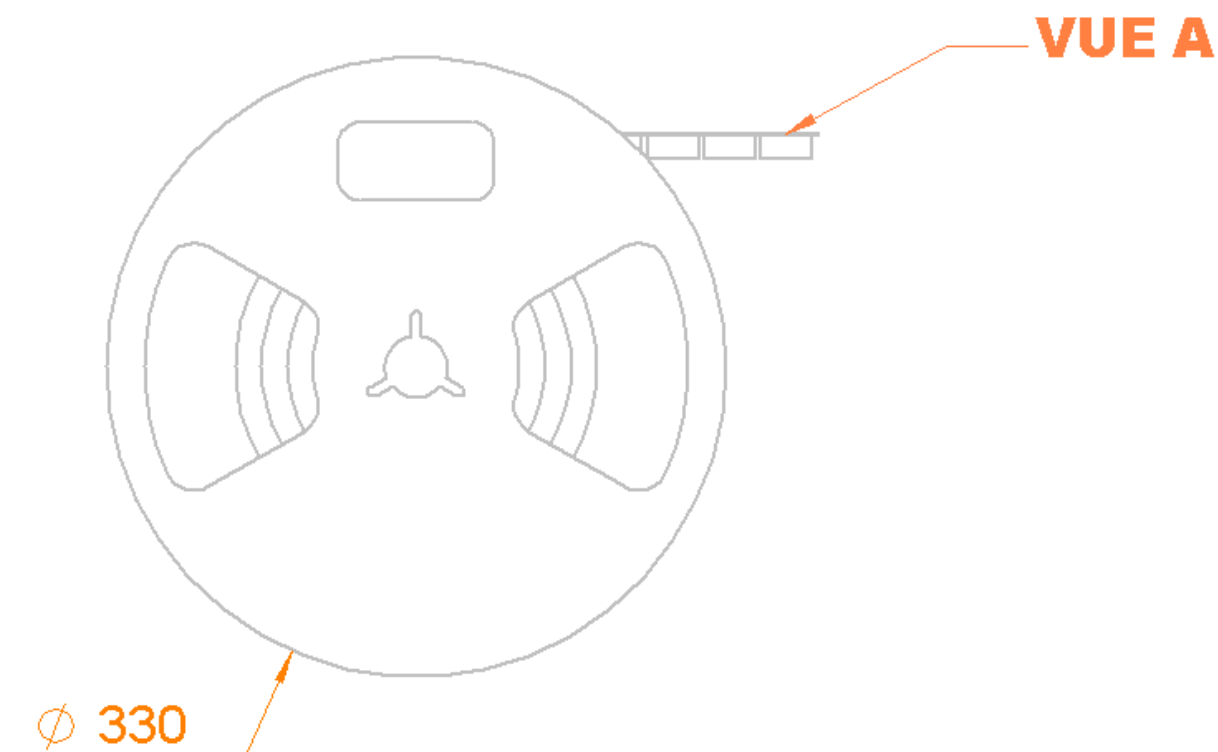
RADIAL

STRAIGHT MALE RECEPTACLE SMT

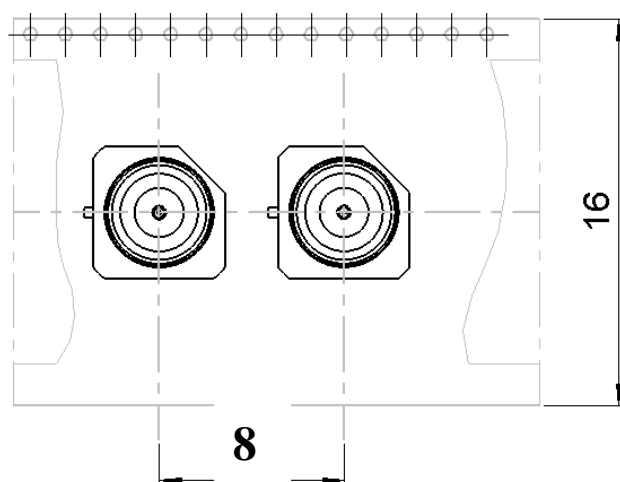
FULL DETENT TAPE AND REEL 100

R222.941.130

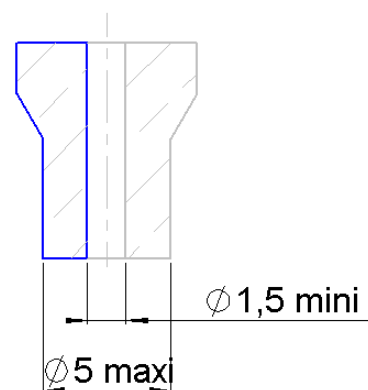
Series : SMP-COM



Vue suivant A



AIR SUNCTION



Issue : 1121 A

In the effort to improve our products, we reserve the right to make changes judged to be necessary.

RADIAL 