

PAGE **1/2**

ISSUE **07.10.14**

SERIE : **SPDT ZC**

PART NUMBER : **R585372230**

RF CHARACTERISTICS

Frequency range : **0 - 3 GHz**
Impedance : **50 Ohms**

Frequency (GHz)	DC - 3
VSWR max	1.20
Insertion loss max	0.20 dB
Isolation min	80 dB
Average power (*)	240 W

ELECTRICAL CHARACTERISTICS

Actuator : **NORMALLY OPEN**
Nominal current ** : **250 mA**
Actuator voltage (Vcc) : **12V (10.2 to 13V) / NEGATIVE COMMON**
Terminals : **solder pins (250°C max. / 30 sec.)**

MECHANICAL CHARACTERISTICS

Connectors : **SMA female per MIL-C 39012**
Life : **2 million cycles**
Switching Time*** : **< 10 ms**
Construction : **Splashproof**
Weight : **< 100 g**

ENVIRONMENTAL CHARACTERISTICS

Operating temperature range : **-40°C to +85°C**
Storage temperature range : **-55°C to +85°C**

- (*) Average power at 25°C per RF Path)
(**) At 25° C ±10%)
(***) Nominal voltage ; 25° C)



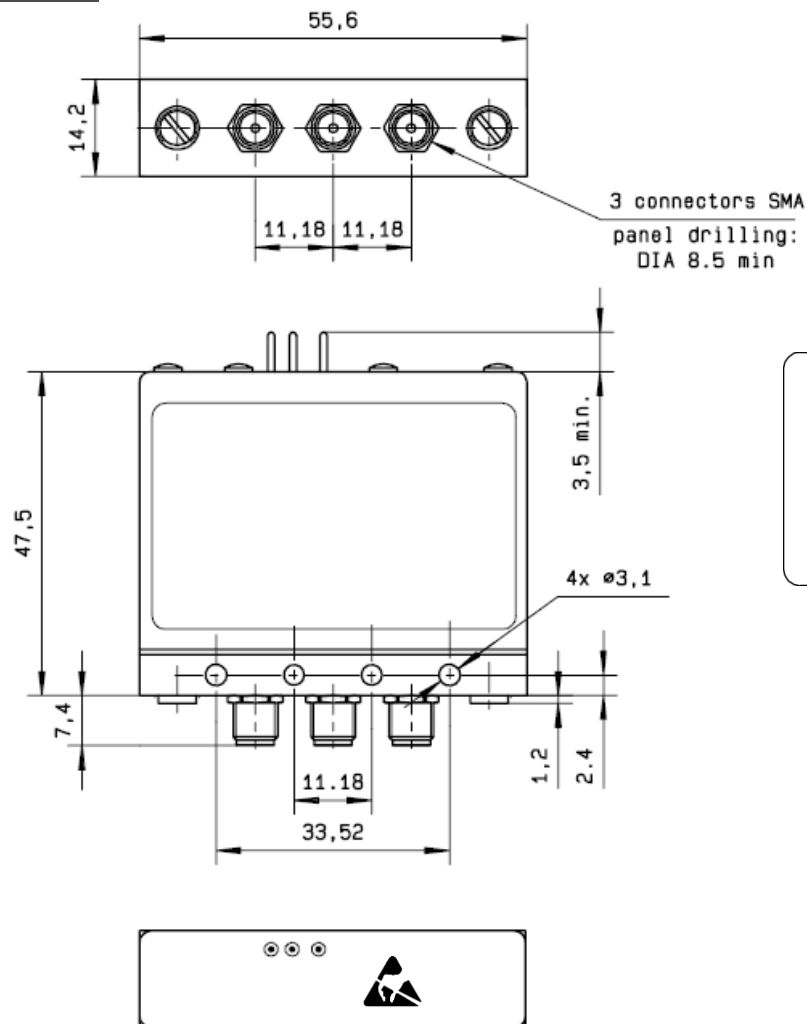
PAGE 2/2

ISSUE 07.10.14

SERIE : SPDT ZC

PART NUMBER : R585372230

DRAWING



LABEL

+2 +1 -C 0 - 3 GHz
Un : 12V

RADIALL®
R585372230
Lot : _ _ _ _

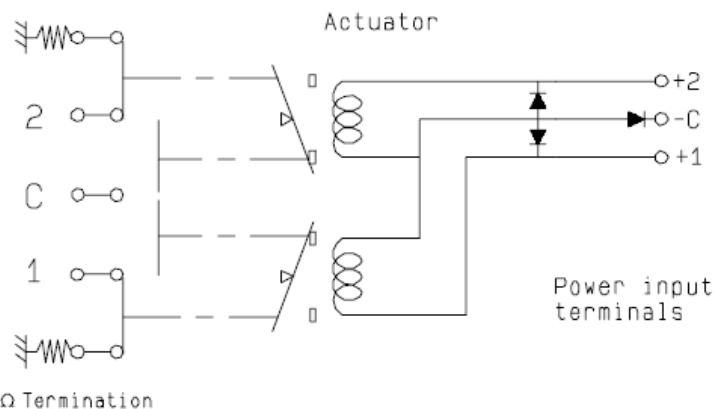
2 C 1

General tolerances : ± 0.5 mm

SCHEMATIC DIAGRAM

RF input

50 Ω Termination



Voltage	RF Continuity
-C +1	C \leftrightarrow 1 / 2 \leftrightarrow 50 Ω
-C +2	C \leftrightarrow 2 / 1 \leftrightarrow 50 Ω
De-energized	1 \leftrightarrow 50 Ω / 2 \leftrightarrow 50 Ω

Power input
terminals