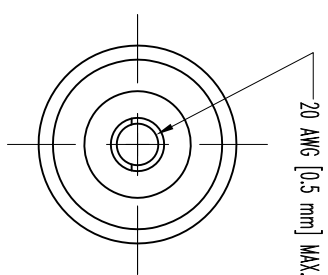
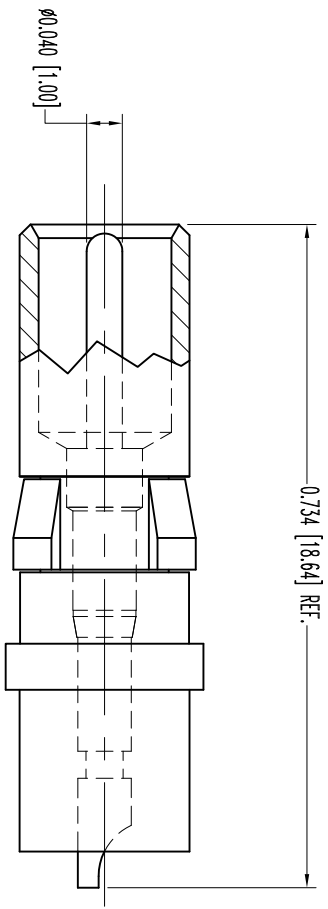


THIS DRAWING CONTAINS INFORMATION PROPRIETARY TO POSITRONIC AND ITS SUBSIDIARIES. POSITRONIC BELIEVES THIS INFORMATION TO BE UNPUBLISHED AND CONFIDENTIAL. TECHNICAL INFORMATION IS GIVEN FREE OF CHARGE. THE USER EMPLOY'S SUCH INFORMATION AT HIS OWN DISCRETION AND RISK. POSITRONIC ASSUMES NO RESPONSIBILITY FOR SUCH INFORMATION IN WHOLE OR IN PART.

SK7529

DATE	REV	REVISION/RECORD	APP	DR	OK
6-5-06	NC	ECO 26077	RW	YK	COLE
11-9	A	ECO 34713	COLE	BE	COLE



NOTES:

1. MATERIALS AND FINISHES:
INSULATOR: PTFE, WHITE COLOR.
SIGNAL CONTACT: COPPER ALLOY, 0.000030 [0.75µ] GOLD OVER NICKEL PLATE.
RETENTION RING: BERYLLIUM COPPER, NICKEL PLATE.
2. DETAILED PRODUCT, ELECTRICAL, AND MECHANICAL INFORMATION IS AVAILABLE IN THE LATEST STANDARD DENSITY COMBO-D PRODUCT PUBLICATION. VISIT CONNECTPOSITRONIC.COM/PRODUCTS/1/STANDARDENSITYCOMBO-D OR CONNECTPOSITRONIC.COM.
3. CONNECTORS ARE ROHS COMPLIANT PER ROHS DIRECTIVE 2002/95/EC OF 27 JAN 2003.
4. DIMENSIONS ARE IN INCHES [MILLIMETERS].



POSITRONIC INDUSTRIES INC.
www.connectpositronic.com FSCM 28198

DECIMAL TOL.	± 0.015 [0.38]	ANGULAR TOL.	± 5°
CBD SERIES	FS4820D/AA	SCALE	N.T.S.
DRAWN BY	YK	APPROVED BY	RW

DATE	6-5-06	DRAWING NUMBER	SK7529	REV.	A
------	--------	----------------	--------	------	---