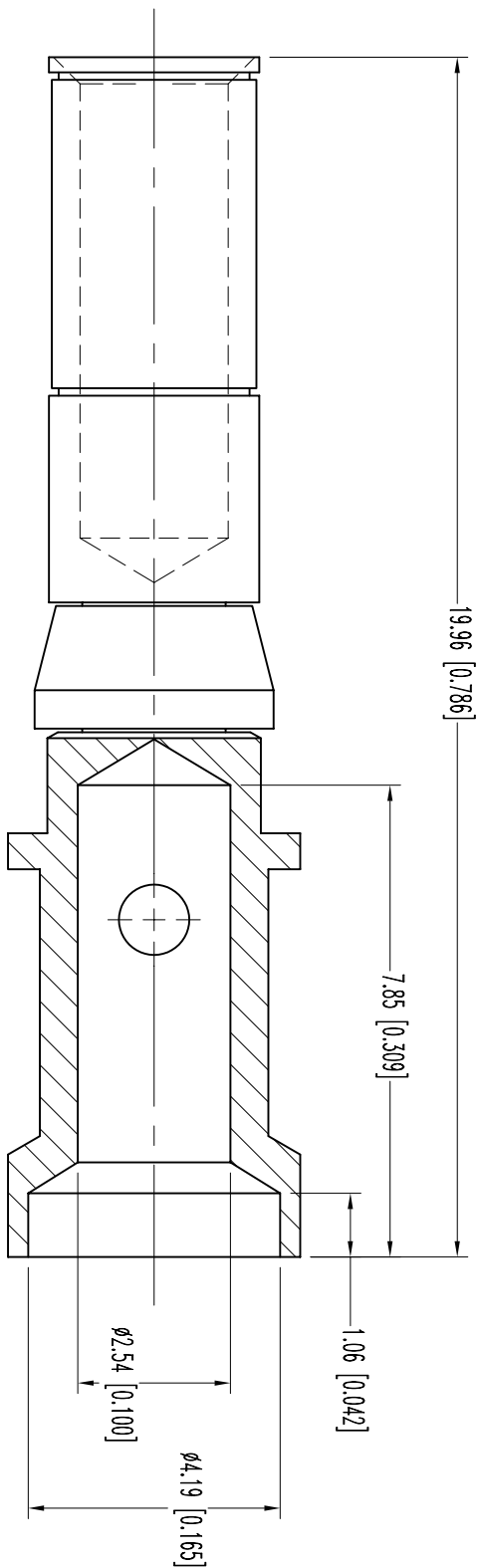


POSITRONIC INDUSTRIES BELIEVES THE DATA ON THIS DRAWING TO BE RELIABLE SINCE THE TECHNICAL EMPLOYER'S SUCH INFORMATION AT HIS OWN DISCRETION. POSITRONIC INDUSTRIES ASSUMES NO LIABILITY OR RESPONSIBILITY FOR RESULTS OBTAINED OR DAMAGES INCURRED FROM USE OF SUCH INFORMATION IN WHOLE OR IN PART.

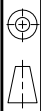


NOTES:

1. MATERIALS AND FINISHES:
CONTACT: PRECISION MACHINED COPPER ALLOY, GOLD FLASH OVER NICKEL PLATE.
RETENTION CLIP: BERYLLIUM COPPER, GOLD FLASH OVER NICKEL PLATE.
2. ELECTRICAL CHARACTERISTICS:
CURRENT RATING: 40 AMPERES CONTINUOUS.
INITIAL CONTACT RESISTANCE: 0.001 OHMS. MAX., PER IEC 512-2 TEST 2b.
3. WORKING TEMPERATURE: -55°C TO +125°C.
4. CONTACTS ARE ROHS COMPLIANT PER ROHS DIRECTIVE 2002/95/EC OF 27 JAN 2003.
5. DIMENSIONS ARE IN MILLIMETERS [INCHES].



POSITRONIC
INDUSTRIES INC.
www.connectpositronic.com



DECIMAL TOL.
± 0.015 [0.38]

SCALE
N.T.S.

YK

INFINITY/PCS SERIES

DRAWN BY

TITLE

FC612N2/AA

ANGULAR TOL.
± 5°

DATE
5-9-06

DRAWING NUMBER
SK7346

REV.
NC

DATE	REV	REVISION RECORD	APP	DR	CK
5-9-06	NC	ECO 25932		YK	

SK7346