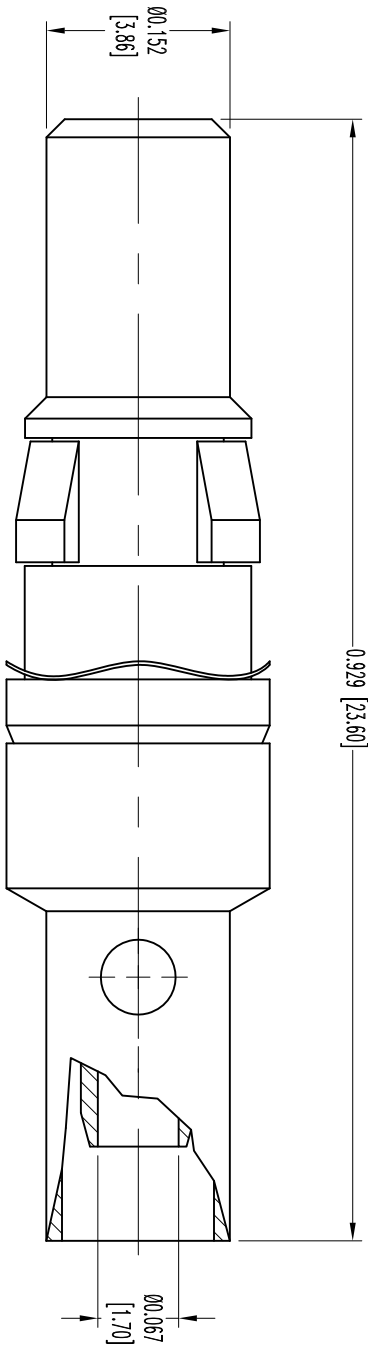


THIS DRAWING CONTAINS INFORMATION PROPRIETARY TO POSITRONIC INDUSTRIES INC. THE DATA ON THIS DRAWING TO BE RELIABLE. SINCE THE TECHNICAL INFORMATION IS GIVEN FREE OF CHARGE, THE USER ASSUMES ALL RESPONSIBILITY FOR THE RESULTS OBTAINED OR DAMAGES INCURRED FROM USE OF SUCH INFORMATION IN WHOLE OR IN PART.




NOTES:

1. CONTACT MATERIAL: COPPER ALLOY WITH PTFE TEFION INSULATOR.  
FINISH: SIGNAL CONTACT-0.000030 [0.75µ] GOLD OVER NICKEL. CONTACT BODY-GOLD FLASH OVER NICKEL.  
SPRING WASHER: BERYLLIUM COPPER, GOLD FLASH OVER NICKEL.  
RETENTION RING: BERYLLIUM COPPER, NICKEL PLATE.
2. DETAILED PRODUCT, ELECTRICAL, AND MECHANICAL INFORMATION IS AVAILABLE IN THE LATEST STANDARD DENSITY COMBO-D PRODUCT PUBLICATION. VISIT [CONNECTPOSITRONIC.COM/PRODUCTS/1/STANDARDDENSITYCOMBO-D](http://CONNECTPOSITRONIC.COM/PRODUCTS/1/STANDARDDENSITYCOMBO-D) OR [CONNECTPOSITRONIC.COM](http://CONNECTPOSITRONIC.COM).
3. CONTACTS ARE ROHS COMPLIANT PER ROHS DIRECTIVE 2002/95/EC OF 27 JAN 2003.
4. DIMENSIONS ARE IN INCHES [MILLIMETERS].

DATE	REV	REVISION/RECORD	APP	DR	CK
3-27-06	NC	ECO 25695	RW	YK	COLM
1-9-11	A	ECO 34713	COLM	BE	COLM

SK7212

 <p><b>POSITRONIC INDUSTRIES INC.</b> www.connectpositronic.com</p>		SCALE		DRAWN BY	
		N.T.S.		YK	
DATE		DRAWING NUMBER		REV.	
3-27-06		SK7212		A	
TITLE		FSC# 28198			
MS4102D/AA					
ANGULAR TOL.		DECIMAL TOL.			
± 0°		± 0.015 [0.38]			