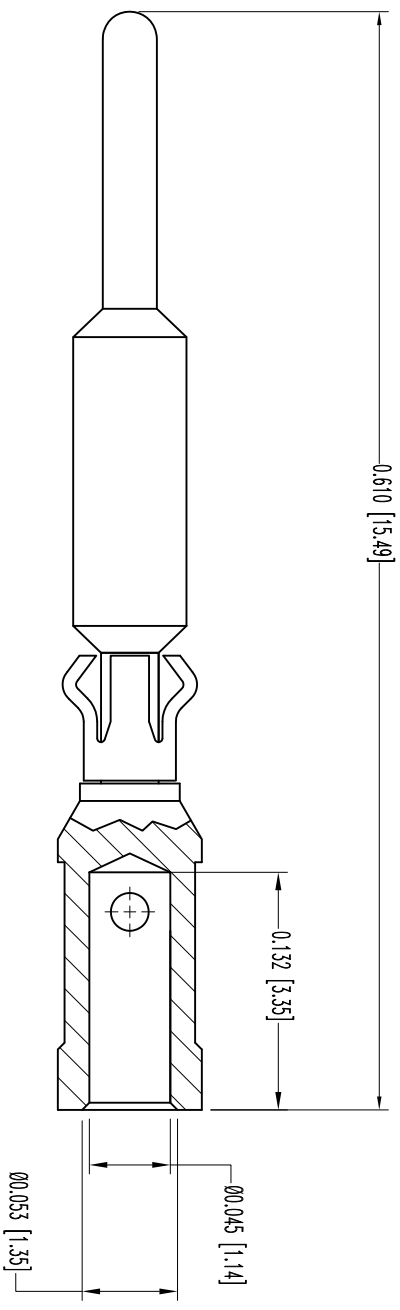


THIS DRAWING CONTAINS INFORMATION PROPRIETARY TO POSITRONIC INDUSTRIES INC. THE DATA ON THIS DRAWING IS GIVEN FREE OF CHARGE. THE USER EMPLOYS SUCH INFORMATION AT HIS OWN DISCRETION. POSITRONIC INDUSTRIES INC. ASSUMES NO LIABILITY FOR RESULTS OBTAINED OR DAMAGES INCURRED FROM USE OF SUCH INFORMATION IN WHOLE OR IN PART.


SK6922

DATE	REV	REVISION RECORD	APP	DR	CK
1-5-06	NC	ECO 25314	RCM	YK	TK
2-22-06	A	ECO 35259	COLL	BS	COLL
3-12-06	B	ECO 35351	COLL	BS	COLL



NOTES:

1. MATERIALS AND FINISHES:
CONTACT: COPPER ALLOY, 0.000015 [0.38µ] GOLD OVER NICKEL PLATE.
RETAINING CLIP: BERYLLIUM COPPER. GOLD FLASH OVER NICKEL PLATE.
2. DETAILED PRODUCT, MECHANICAL, AND ELECTRICAL INFORMATION IS AVAILABLE IN THE LATEST HIGH DENSITY RECTANGULAR PRODUCT PUBLICATION. VISIT CONNECTPOSITRONIC.COM/PRODUCTS/54/HIGHDENSITYRECTANGULAR OR CONNECTPOSITRONIC.COM.
3. CONTACTS ARE ROHS COMPLIANT PER ROHS DIRECTIVE 2002/95/EC OF 27 JAN 2003.
4. DIMENSIONS ARE IN INCHES [MILLIMETERS].

 <p>POSITRONIC INDUSTRIES INC. www.connectpositronic.com</p>		SCALE		DRAWN BY	
		N.T.S.		YK	
TITLE		SGMC SERIES		APPROVED BY	
MC420N/AA		R WILLIAMS		FSCM 28198	
DATE	1-5-06	DRAWING NUMBER	SK6922	REV.	B
DECIMAL TOL.	± 0.015 [0.38]	ANGULAR TOL.	± 3°		