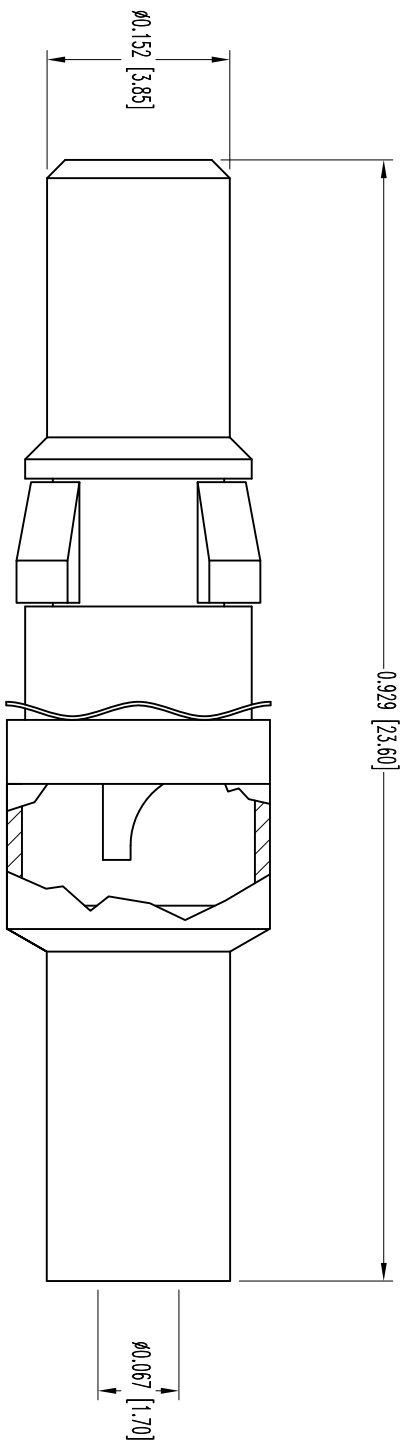



THIS DRAWING CONTAINS INFORMATION PROPRIETARY TO POSITRONIC AND ITS SUBSIDIARIES. POSITRONIC BELIEVES THE DATA ON THIS DRAWING TO BE RELIABLE. SINCE THE TECHNICAL INFORMATION IS GIVEN FOR GENERAL INFORMATION ONLY, POSITRONIC ASSUMES NO RESPONSIBILITY FOR RESULTS OBTAINED OR DAMAGES INCURRED FROM USE OF SUCH INFORMATION UNLESS SHOWN OTHERWISE ON THIS DRAWING.

DATE	REV	REVISION RECORD	APP	DR	CHK
11-29-06	NC	ECO 25113	RW	YK	COLM
11-9-11	A	ECO 34707	COLM	BE	COLM

SK6759



- NOTES:
1. MATERIAL: PRECISION MACHINED COPPER ALLOY WITH PTFE TEFLON INSULATOR.
 2. FINISH: SIGNAL CONTACT-0.000030 [0.75µ] GOLD OVER NICKEL. CONTACT BODY-GOLD FLASH OVER NICKEL.
 3. DETAILED PRODUCT, ELECTRICAL, AND MECHANICAL INFORMATION IS AVAILABLE IN THE LATEST STANDARD DENSITY COMBO-D PRODUCT PUBLICATION. VISIT CONNECTPOSITRONIC.COM/PRODUCTS/1/STANDARDENSITYCOMBO-D OR CONNECTPOSITRONIC.COM.
 4. CONTACTS ARE ROHS COMPLIANT PER ROHS DIRECTIVE 2002/95/EC OF 27 JAN 2003.
 5. DIMENSIONS ARE IN INCHES [MILLIMETERS].

 <p>POSITRONIC INDUSTRIES INC. www.connectpositronic.com</p>		SCALE		DRAWN BY		FSC# 28198	
		N.T.S.		YK			
<p>DECIMAL TOL. ± 0.015 [0.38]</p>		<p>CBD SERIES</p>		<p>APPROVED BY</p>		<p>RW</p>	
<p>ANGULAR TOL. ± 5°</p>		<p>DATE 11-29-05</p>		<p>DRAWING NUMBER SK6759</p>		<p>REV. A</p>	
<p>TITLE</p>		<p>MCA102D/AA</p>					