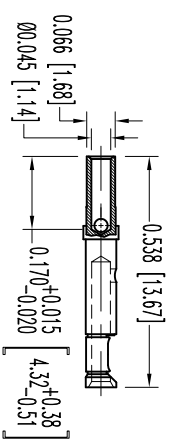
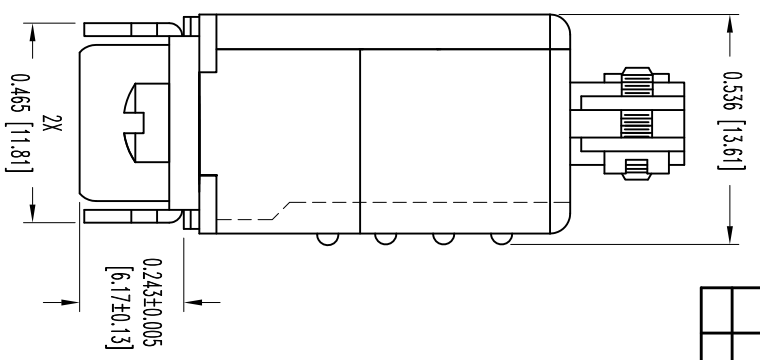
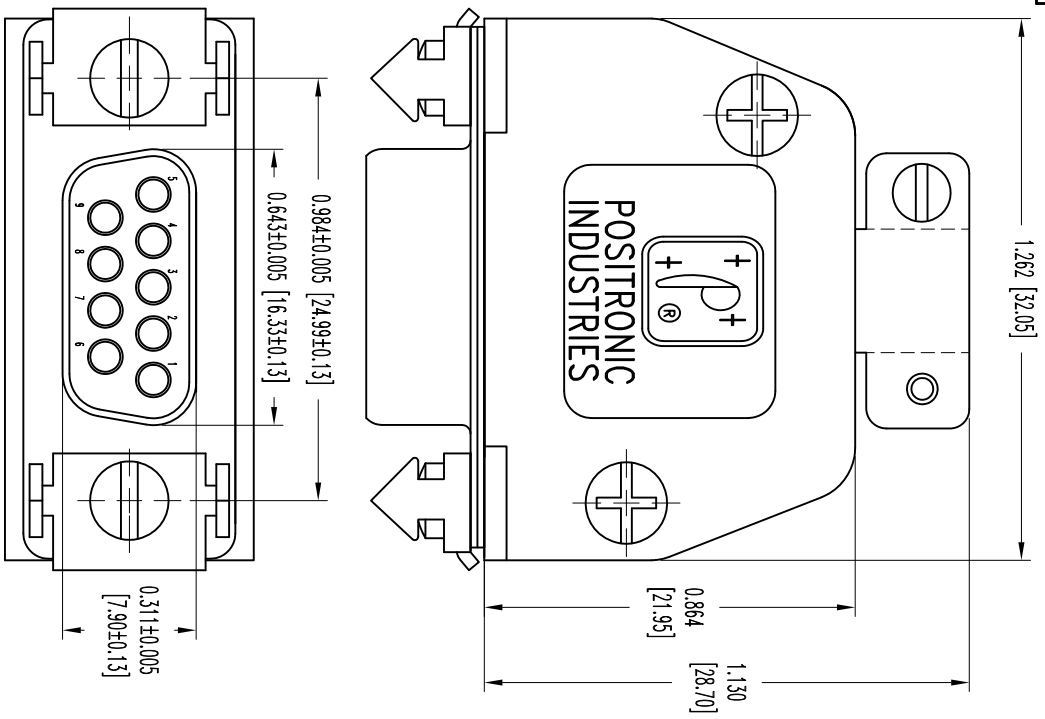



THIS DRAWING CONTAINS INFORMATION PROPRIETARY TO POSITRONIC INDUSTRIES. THE DATA ON THIS DRAWING TO BE RELEASED SINCE THE TECHNICAL INFORMATION IS GIVEN FREE OF CHARGE. THE USER BUREAU'S SUCH INFORMATION AT HIS OWN DISCRETION. RESULTS OBTAINED OR DAMAGES INCURRED FROM USE OF SUCH INFORMATION IN WHOLE OR IN PART.



9X FEMALE CONTACT

DATE	REV	REVISION RECORD	APP	DR	CK
2-21	NC	ECO 35242	COLL	BS	COLL

SK13755

		POSITRONIC INDUSTRIES INC. www.connectpositronic.com		FSC# 28198	
		RD SERIES	SCALE N.T.S.	DRAWN BY B SHELLY	APPROVED BY COLL
DECIMAL TOL. ± 0.015 [0.38]		TITLE RD9S10JV30		DATE 2-21-12	
ANGULAR TOL. $\pm 5^\circ$		DRAWING NUMBER SK13755		REV. NC	

NOTES:
 1. MATERIALS AND FINISHES:
 INSULATOR: GLASS FILLED DAP PER ASTM-D5948, SDG-F, UL 94V-0, COLOR: GREEN.
 CONTACTS: PRECISION MACHINED COPPER ALLOY, GOLD FLASH OVER NICKEL PLATE.
 SHELLS: STEEL, ZINC PLATE WITH CHROMATE SEAL.
 HOOD: GLASS FILLED POLYESTER, UL 94V-0, COLOR: BLACK.
 LOCK TABS: STEEL WITH NICKEL PLATE.
 2. DETAILED PRODUCT, MECHANICAL, AND ELECTRICAL INFORMATION IS AVAILABLE IN THE LATEST STANDARD DENSITY D-SUB PRODUCT PUBLICATION. VISIT CONNECTPOSITRONIC.COM/PRODUCTS/45/STANDARD-DENSITY-D-SUB-PRODUCT-PUBLICATION. VISIT CONNECTPOSITRONIC.COM.
 3. DIMENSIONS ARE IN INCHES [MILLIMETERS].