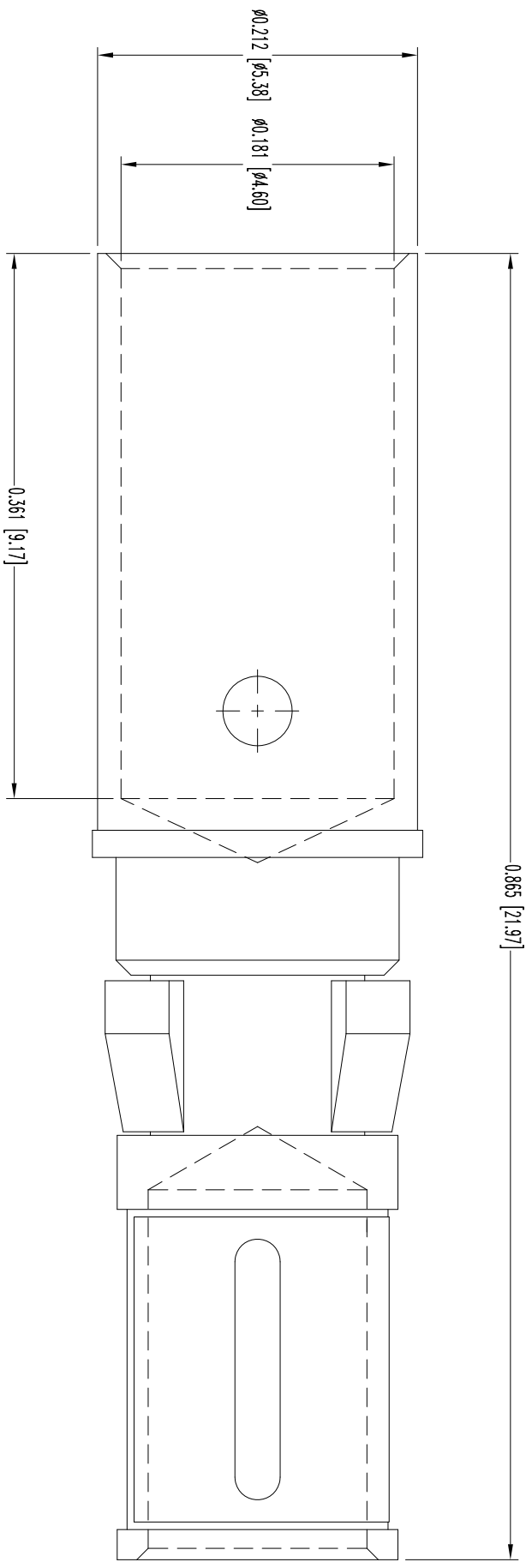


THIS DRAWING CONTAINS INFORMATION PROPRIETARY TO POSITRONIC AND ITS SUBSIDIARIES. POSITRONIC BELIEVES TECHNICAL INFORMATION IS GIVEN FREE OF CHARGE. THE USER EMPLOYING SUCH INFORMATION AT HIS OWN DISCRETION AND RISK. POSITRONIC ASSUMES NO RESPONSIBILITY FOR INFORMATION OBTAINED FROM USE OF SUCH INFORMATION IN WHOLE OR IN PART.




**NOTES:**

1. MATERIAL AND FINISHES:  
CONTACT: HIGH CONDUCTIVITY COPPER ALLOY, GOLD FLASH OVER NICKEL.
2. DETAILED PRODUCT, ELECTRICAL, AND MECHANICAL INFORMATION IS AVAILABLE IN THE LATEST STANDARD DENSITY COMBO-D PRODUCT PUBLICATION.  
VISIT [CONNECTPOSITRONIC.COM/PRODUCTS/1/STANDARDENSITYCOMBO-D](http://CONNECTPOSITRONIC.COM/PRODUCTS/1/STANDARDENSITYCOMBO-D) OR [CONNECTPOSITRONIC.COM](http://CONNECTPOSITRONIC.COM).
3. CONTACTS ARE COMPLIANT TO THE CURRENT ROHS DIRECTIVE.
4. DIMENSIONS ARE IN INCHES [MILLIMETERS].

DATE	REV	REVISION RECORD	APP	DR	CK
10-13-09	NC	ECO 31619	RCW	BS	TK
3-25-10	A	ECO 32285	COLL	BE	SY
12-21-12	B	ECO 38090	COLL	BE	COLL

SK11060

 <p><b>POSITRONIC INDUSTRIES INC.</b> www.connectpositronic.com</p>		SCALE		DRAWN BY	
		N.T.S.		B SHELLIDY	
DATE		DRAWING NUMBER		REV.	
10-13-09		SK11060		B	
TITLE		CBD SERIES		APPROVED BY	
FC4008DS/AA		R WILLIAMS		FSCM 28198	
DECIMAL TOL.		ANGULAR TOL.			
± 0.015 [0.38]		± 5°			