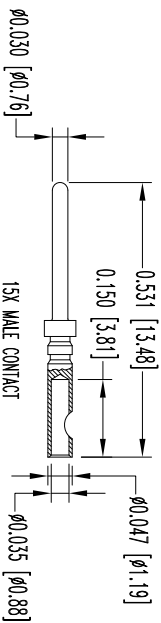
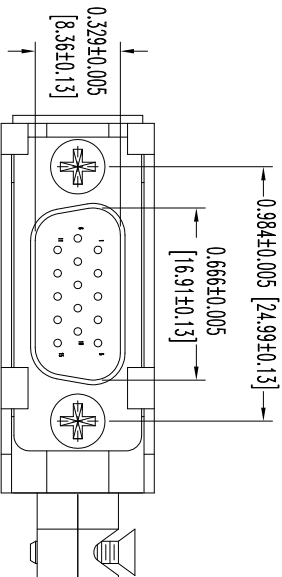
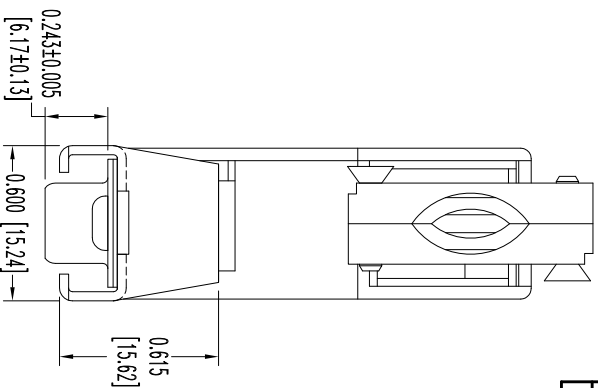
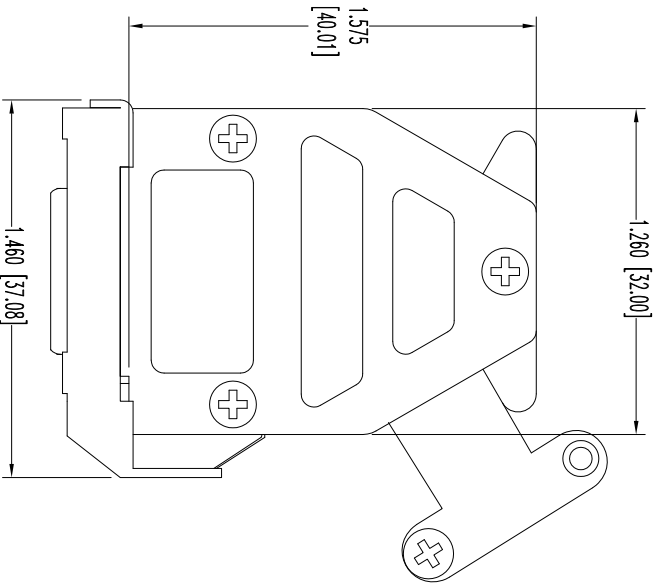


THIS DRAWING CONTAINS INFORMATION PROPRIETARY TO POSITRONIC, INC. ANY REPRODUCTION OR UNAUTHORIZED USE OF THIS DRAWING IS EXPRESSLY PROHIBITED, EXCEPT AS POSITRONIC, INC. MAY OTHERWISE AGREE IN WRITING.



NOTES:

1. MATERIALS AND FINISHES:

INSULATOR: GLASS FILLED POLYESTER PER ASTM-D5927, UL 94V-0, COLOR: BLUE.  
CONTACTS: PRECISION MACHINED COPPER ALLOY, GOLD FLASH OVER NICKEL PLATE.  
SHELLS: STEEL WITH TIN PLATE.

HOOD AND CABLE CLAMPS: DIE CAST ZINC.

LOCK LEVER AND SCREWS: STEEL WITH NICKEL PLATE.


MOUNTING SCREWS: STEEL, ZINC PLATE WITH CHROMATE SEAL.

2. DETAILED PRODUCT, MECHANICAL, AND ELECTRICAL INFORMATION IS IN THE LATEST HIGH DENSITY D-SUB PRODUCT PUBLICATION. VISIT [CONNECTPOSITRONIC.COM/PRODUCTS/59/HIGHDENSITYD-SUBMINIATURE](http://CONNECTPOSITRONIC.COM/PRODUCTS/59/HIGHDENSITYD-SUBMINIATURE) OR [CONNECTPOSITRONIC.COM](http://CONNECTPOSITRONIC.COM).

3. DIMENSIONS ARE IN INCHES [MILLIMETERS].

DATE	REV	REVISION RECORD	APP	DR	CK
6-19	12	NC	ECO 36130	COLE BS	COLE

SK14192

 POSITRONIC INDUSTRIES INC. SPRINGFIELD, MISSOURI 65801					
DD SERIES		SCALE N.T.S.		DRAWN BY B SHELLBY	
TITLE DD15M20GV1X		APPROVED BY COLE			
DATE 6-21-12		DRAWING NUMBER SK14192		REV. NC	
ANGULAR TOL. ± 5°					
DECIMAL TOL. ± 0.015 [0.38]					