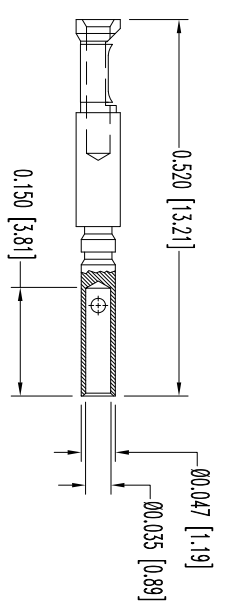
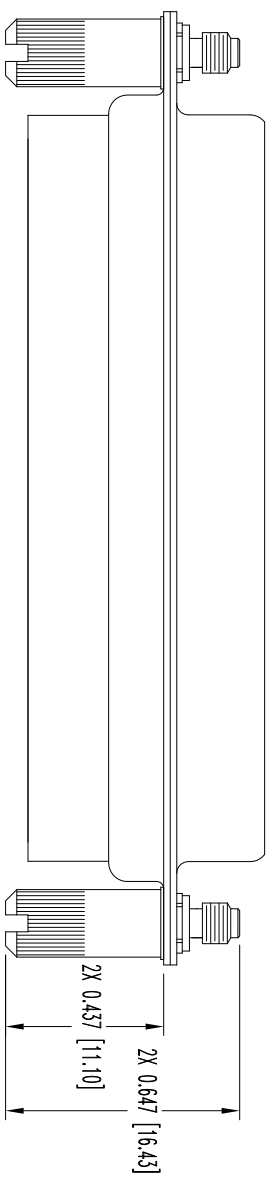
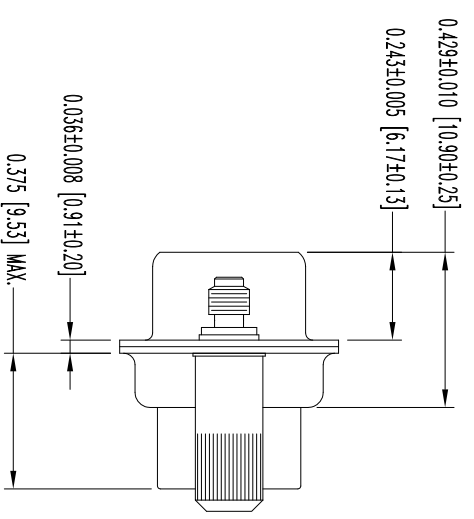
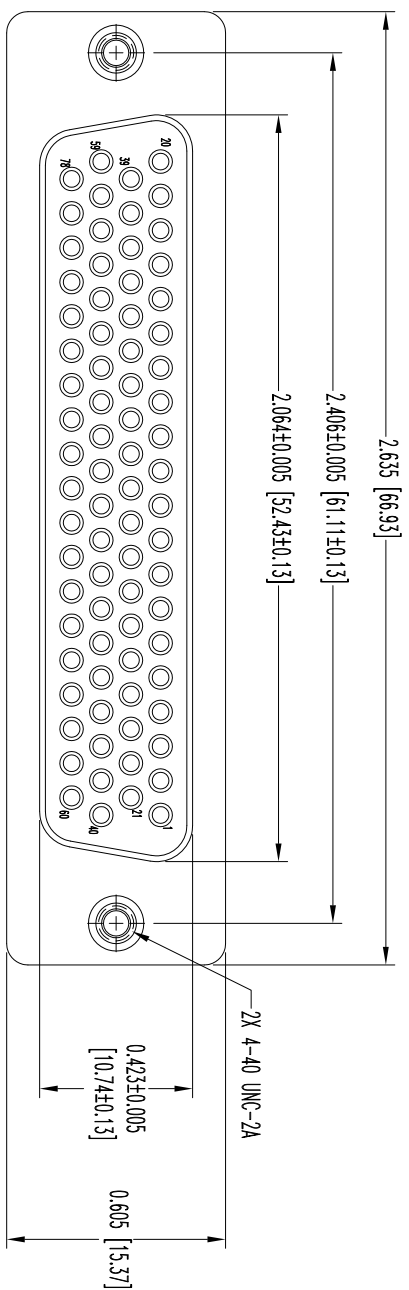


THIS DRAWING CONTAINS INFORMATION PROPRIETARY TO POSITRONIC INDUSTRIES, INC. ANY REPRODUCTION, DISCLOSURE OR USE OF THIS DRAWING IS EXPRESSLY PROHIBITED. CONTACT POSITRONIC INDUSTRIES, INC. FOR FURTHER INFORMATION. DRAWING MADE BY: J. HEWITT, ASEE IN WRITING.



**78X FEMALE CONTACT**  
ENLARGED

NOTES:  
 1. MATERIALS AND FINISHES:  
 INSULATOR- GLASS FILLED POLYESTER PER ASTM-D5927, UL 94V-0, COLOR: BLUE.  
 CONTACTS- PRECISION MACHINED COPPER ALLOY, GOLD FLASH OVER NICKEL PLATE.  
 SHELLS- STEEL, ZINC PLATE WITH CHROMATE SEAL.  
 JACKSCREWS- STEEL, ZINC PLATE WITH CHROMATE SEAL.  
 2. DETAILED PRODUCT, MECHANICAL, AND ELECTRICAL INFORMATION IS AVAILABLE IN THE LATEST HIGH DENSITY D-SUB PRODUCT PUBLICATION. VISIT [CONNECTPOSITRONIC.COM/PRODUCTS/59/HIGHDENSITY-SUBMINIATURE](http://CONNECTPOSITRONIC.COM/PRODUCTS/59/HIGHDENSITY-SUBMINIATURE) OR [CONNECTPOSITRONIC.COM](http://CONNECTPOSITRONIC.COM).  
 3. DIMENSIONS ARE IN INCHES [MILLIMETERS].

		<b>POSITRONIC INDUSTRIES INC.</b> SPRINGFIELD, MISSOURI 65801	
		SCALE	DRAWN BY
DECIMAL TOL.	DD SPRINGS	N.T.S.	B. SHELLBOY
± 0.015 [0.38]	TITLE	DD78S100E0	APPROVED BY
± 0.015 [0.38]	DATE	5-21-13	COLE
ANGULAR TOL.	DRAWING NUMBER	SK15112	REV.
± 5°			NC

DATE	REV	REVISION RECORD	APP	DR	CK
5-21-13	NC	ECO 39541	COLE	BS	COLE

SK15112