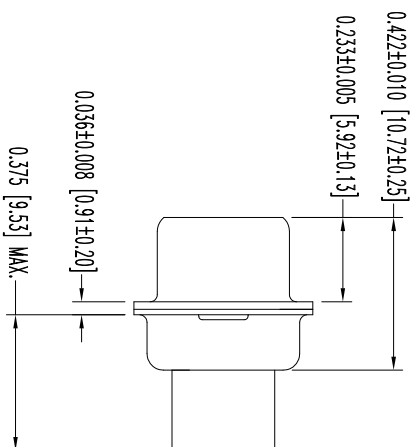
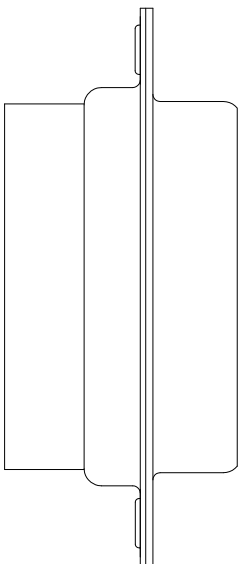
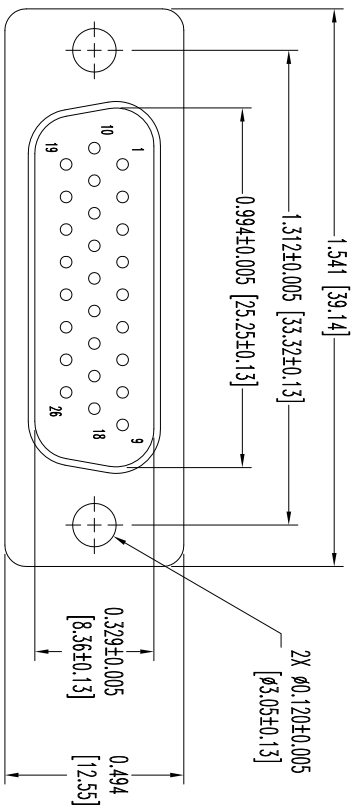


THIS DRAWING CONTAINS INFORMATION PROPRIETARY TO POSITRONIC AND ITS SUBSIDIARIES. POSITRONIC BELIEVES THE DATA ON THIS DRAWING TO BE RELIABLE, SINCE THE TECHNICAL INFORMATION IS GIVEN FREE OF CHARGE. THE USER ASSUMES ALL LIABILITY FOR THE USE OF THIS INFORMATION AND RISK. POSITRONIC ASSUMES NO RESPONSIBILITY FOR RESULTS OBTAINED OR DAMAGES INCURRED FROM USE OF SUCH INFORMATION IN WHOLE OR IN PART.



- NOTES:
1. MATERIALS AND FINISHES:  
INSULATOR: GLASS FILLED POLYESTER PER ASTM-D5927, UL 94V-0, COLOR: BLUE.  
SHELS: STEEL WITH TIN PLATE.
  2. DETAILED PRODUCT, MECHANICAL, AND ELECTRICAL INFORMATION IS AVAILABLE IN THE LATEST HIGH DENSITY D-SUB PRODUCT PUBLICATION. VISIT [CONNECTPOSITRONIC.COM/PRODUCTS/59/HIGHDENSITY-D-SUBMINIATURE](http://CONNECTPOSITRONIC.COM/PRODUCTS/59/HIGHDENSITY-D-SUBMINIATURE) OR [CONNECTPOSITRONIC.COM](http://CONNECTPOSITRONIC.COM).
  3. DIMENSIONS ARE IN INCHES [MILLIMETERS].

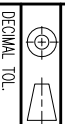
DATE	REV	REVISION RECORD	APP	DR	OK
8-21-12	NC	ECO 36689	COLE	BS	COLE

SK14320



**POSITRONIC INDUSTRIES INC.**  
www.connectpositronic.com

FSCM 28198



DECIMAL TOL.  
± 0.015 [0.38]

DD SERIES

SCALE  
N.T.S.

DRAWN BY  
B SHELLBUDY

APPROVED BY  
COLE

TITLE

DD26M00000X

ANGULAR TOL.  
± 3°

DATE  
8-21-12

DRAWING NUMBER  
SK14320

REV.  
NC