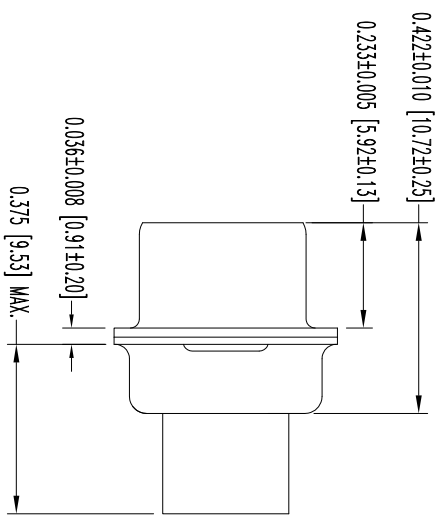
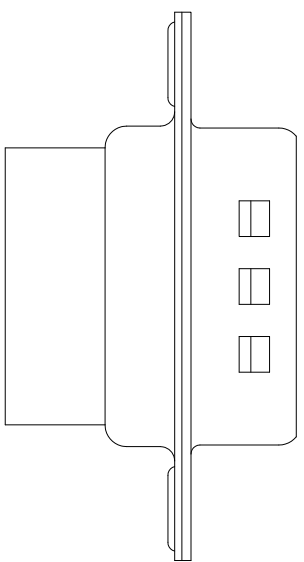
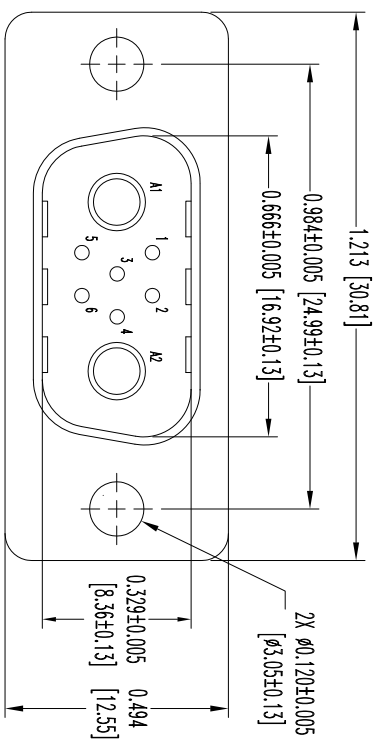



THIS DRAWING CONTAINS INFORMATION PROPRIETARY TO POSITRONIC AND ITS SUBSIDIARIES. POSITRONIC BELIEVES THE DATA ON THIS DRAWING TO BE RELIABLE. SINCE THE TECHNICAL INFORMATION IS GIVEN FREE OF CHARGE, THE USER ASSUMES ALL LIABILITY FOR THE USE OF THE INFORMATION AND RISK. POSITRONIC ASSUMES NO RESPONSIBILITY FOR RESULTS OBTAINED OR DAMAGES INCURRED FROM USE OF SUCH INFORMATION IN WHOLE OR IN PART.



- NOTES:
1. MATERIALS AND FINISHES:  
INSULATORS - GLASS FILLED POLYESTER PER ASTM D5927, UL 94V-0, BLUE COLOR.  
SHELLS - STEEL WITH TIN PLATE AND DIMPLED.
  2. DETAILED PRODUCT, MECHANICAL AND ELECTRICAL INFORMATION IS AVAILABLE IN THE LATEST HIGH DENSITY COMBO-D PRODUCT PUBLICATION. VISIT [CONNECTPOSITRONIC.COM/PRODUCTS/159/HIGHDENSITYCOMBO-D](http://CONNECTPOSITRONIC.COM/PRODUCTS/159/HIGHDENSITYCOMBO-D) OR [CONNECTPOSITRONIC.COM](http://CONNECTPOSITRONIC.COM)
  3. CONNECTORS ARE COMPLIANT TO THE CURRENT ROHS DIRECTIVE.
  4. DIMENSIONS ARE IN INCHES [MILLIMETERS].

DATE	REV	REVISION RECORD	APP	DR	CK
11-29	Nc	ECO 34804	COLE	ME	COLE
1-10	A	ECO 41311	TK	BE	COLE

SK13213

		<b>POSITRONIC INDUSTRIES INC.</b> <a href="http://www.connectpositronic.com">www.connectpositronic.com</a>		FSCM 28198	
		DECIMAL TOL. $\pm 0.015$ [0.38]	SCALE N.T.S.	DRAWN BY ME	APPROVED BY COLE
ANGULAR TOL. $\pm 5^\circ$	TITLE CBCD8W2M00000Z/AA	CBGD SERIES	SCALE N.T.S.	DRAWN BY ME	APPROVED BY COLE
				REV. A	