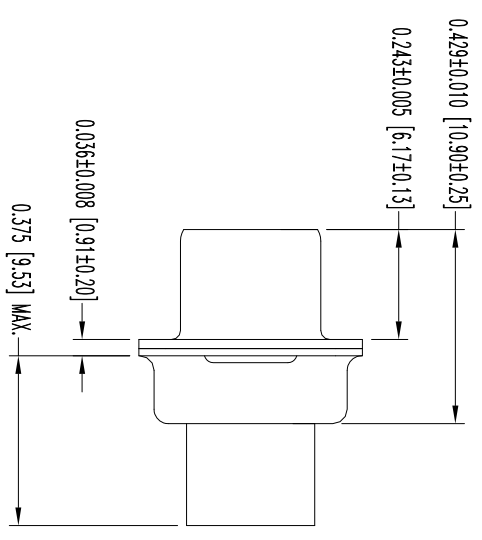
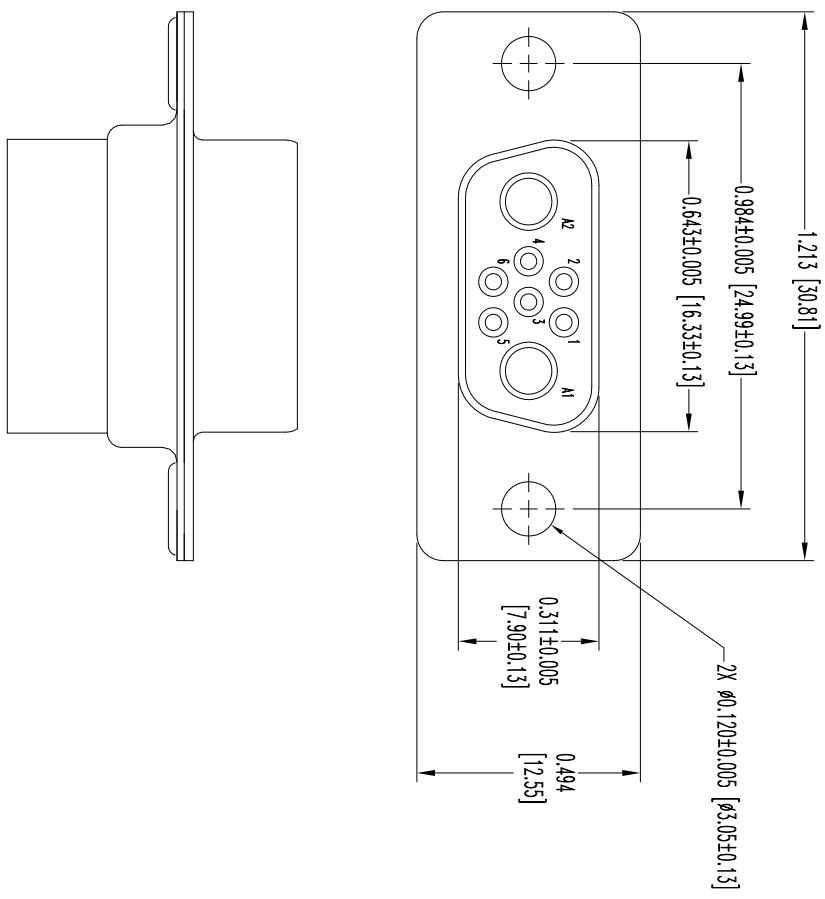


THIS DRAWING CONTAINS INFORMATION PROPRIETARY TO POSITRONIC INDUSTRIES INC. THE DATA ON THIS DRAWING TO BE RELEASED SINCE THE TECHNICAL INFORMATION IS GIVEN FREE OF CHARGE. THE USER BURN-OVS SUCH INFORMATION AT HIS OWN DISCRETION. POSITRONIC INDUSTRIES INC. ASSUMES NO LIABILITY FOR RESULTS OBTAINED OR DAMAGES INCURRED FROM USE OF SUCH INFORMATION IN WHOLE OR IN PART.



NOTES:

1. MATERIALS AND FINISHES:
INSULATOR: GLASS FILLED POLYESTER PER ASTM D5927, UL 94V-0, COLOR: BLUE.
SHELLS: STEEL, TIN PLATE.
2. DETAILED PRODUCT, MECHANICAL AND ELECTRICAL INFORMATION IS AVAILABLE IN THE LATEST HIGH DENSITY COMBO-D PRODUCT PUBLICATION. VISIT CONNECTPOSTRONIC.COM/PRODUCTS/159/HIGHDENSITYCOMBO-D OR CONNECTPOSTRONIC.COM
3. CONNECTORS ARE COMPLIANT TO THE CURRENT ROHS DIRECTIVE.
4. DIMENSIONS ARE IN INCHES [MILLIMETERS].

DATE	REV	REVISION/RECORD	APP	DR	CK
11-9-11	NC	ECO 34715	COLB	LO	COLB
10-30-13	A	ECO 41216	TK	BE	COLB

SK13089



POSITRONIC INDUSTRIES INC.
www.connectpositronic.com

FSCM 28198

DECIMAL TOL. ± 0.015 [0.38]	ANGULAR TOL. ± 5°	SCALE N.T.S.	DRAWN BY L. OWENS	DATE 11-9-11	DRAWING NUMBER SK13089	REV. A
TITLE CBCD SERIES CBCD8W2S0000X/AA		APPROVED BY COLB				