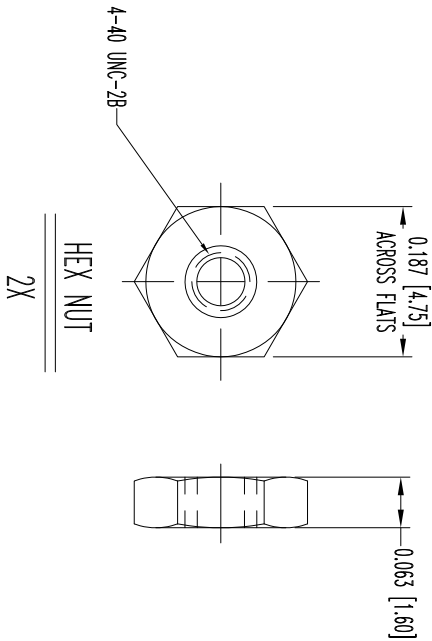
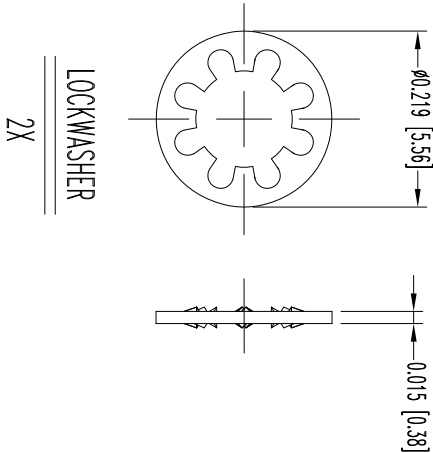
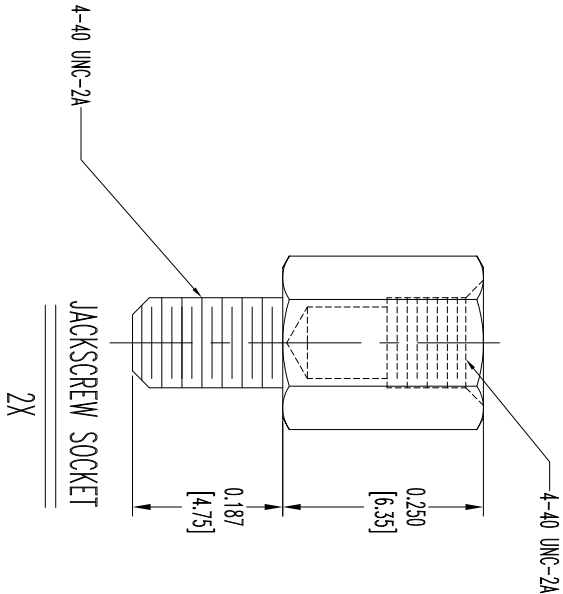



THIS DRAWING CONTAINS INFORMATION PROPRIETARY TO POSITRONIC AND ITS SUBSIDIARIES. POSITRONIC DISCLAIMS ANY AND ALL WARRANTIES, EXPRESS OR IMPLIED, INCLUDING BUT NOT LIMITED TO, THE WARRANTY OF MERCHANTABILITY. THE USER EMPLOYS SUCH INFORMATION AT HIS OWN DISCRETION AND RISKS. POSITRONIC ASSUMES NO RESPONSIBILITY FOR RESULTS OBTAINED OR DAMAGES INCURRED FROM USE OF SUCH INFORMATION IN WHOLE OR IN PART.

SK12916

DATE	REV	REVISION/RECORD	APP	DR	OK
11-1	NC	ECO 34662	COLE	BE	COLE
8-8	A	ECO 40370	COLE	BE	COLE
13					



- NOTES:
1. MATERIALS AND FINISHES:  
JACKSCREW SOCKET: BRASS, ZINC PLATE WITH CHROMATE SEAL.  
LOCKWASHERS: PHOSPHOR BRONZE, ZINC PLATE WITH CHROMATE SEAL.  
HEX NUT: BRASS, ZINC PLATE WITH CHROMATE SEAL.
  2. DETAILED PRODUCT, ELECTRICAL, AND MECHANICAL INFORMATION IS AVAILABLE IN THE LATEST D-SUBMINIATURE ACCESSORIES PRODUCT PUBLICATION. VISIT [CONNECTPOSITRONIC.COM/PRODUCTS/56/D-SUBMINIATUREACCESSORIES](http://CONNECTPOSITRONIC.COM/PRODUCTS/56/D-SUBMINIATUREACCESSORIES) OR [CONNECTPOSITRONIC.COM](http://CONNECTPOSITRONIC.COM).
  3. ACCESSORY IS COMPLIANT TO THE CURRENT ROHS DIRECTIVE.
  4. DIMENSIONS ARE IN INCHES [MILLIMETERS].



**POSITRONIC INDUSTRIES INC.**  
[www.connectpositronic.com](http://www.connectpositronic.com) FSCM 28198

DECIMAL TOL. ± 0.015 [0.38]		SCALE N.T.S.		DRAWN BY B. EVANS	
ANGULAR TOL. ± 5°		D SERIES		APPROVED BY COLE	
DATE 11-1-11		DRAWING NUMBER SK12916		REV. A	
TITLE D0000070/AA					