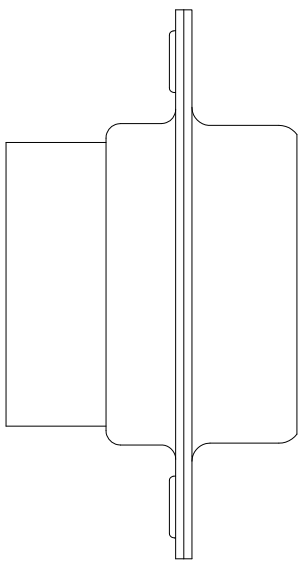
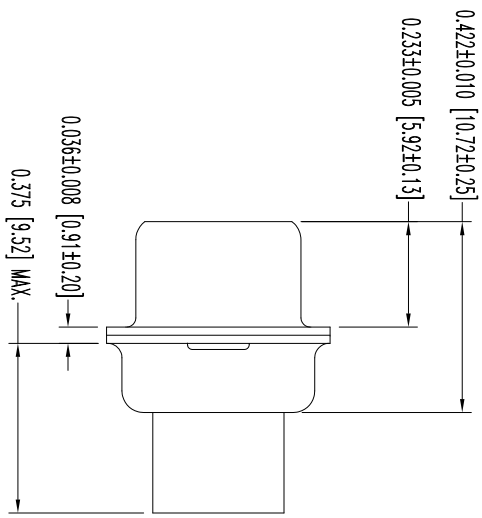
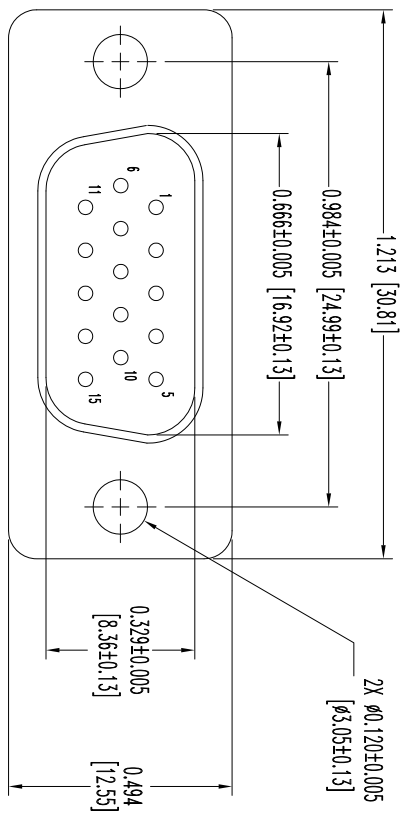



THIS DRAWING CONTAINS INFORMATION PROPRIETARY TO POSITRONIC AND ITS SUBSIDIARIES. POSITRONIC BELIEVES THE DATA ON THIS DRAWING TO BE RELIABLE. SINCE THE TECHNICAL INFORMATION IS GIVEN FOR GENERAL REFERENCE ONLY, POSITRONIC ASSUMES NO RESPONSIBILITY FOR RESULTS OBTAINED OR DAMAGES INCURRED FROM USE OF SUCH INFORMATION IN WHOLE OR IN PART.



- NOTES:
1. MATERIALS AND FINISHES:
INSULATOR: GLASS FILLED POLYESTER PER ASTM D5927, UL 94V-0, COLOR BLUE.
SHELLS: STEEL, ZINC PLATED WITH CHROMATE SEAL.
 2. DETAILED PRODUCT, ELECTRICAL AND MECHANICAL INFORMATION IS AVAILABLE IN LATEST HIGH DENSITY D-SUB PRODUCT PUBLICATION. VISIT CONNECTPOSITRONIC.COM/PRODUCTS/59/HIGHDENSITYD-SUBMINIATURE OR CONNECTPOSITRONIC.COM
 3. CONNECTORS ARE COMPLIANT TO THE CURRENT ROHS DIRECTIVE.
 4. DIMENSIONS ARE IN INCHES [MILLIMETERS].

DATE	REV	REVISION RECORD	APP	DR	CK
10-27	NC	ECO 34641	COLF	LD	COLF
6-17	A	ECO 39827	TK	BE	TK

SK12836

		POSITRONIC INDUSTRIES INC. www.connectpositronic.com		FSCM 28198	
		DD SERIES	SCALE N.T.S.	DRAWN BY L. OMENS	APPROVED BY COLF
DECIMAL TOL. ± 0.015 [0.38]		TITLE DD15M00000/AA		DATE 10-27-11	
ANGULAR TOL. ± 5°		DRAWING NUMBER SK12836		REV. A	