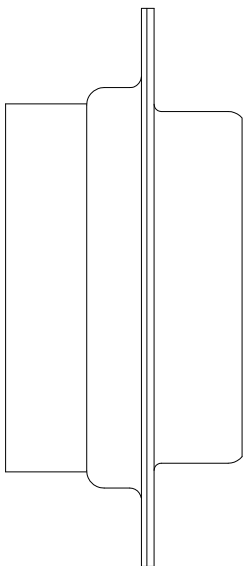
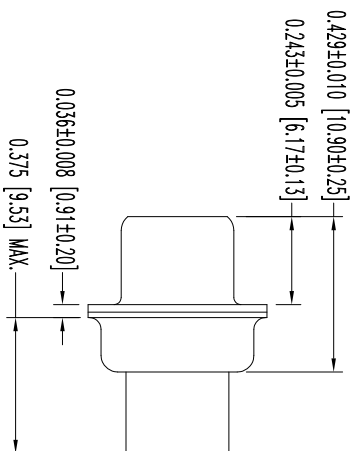
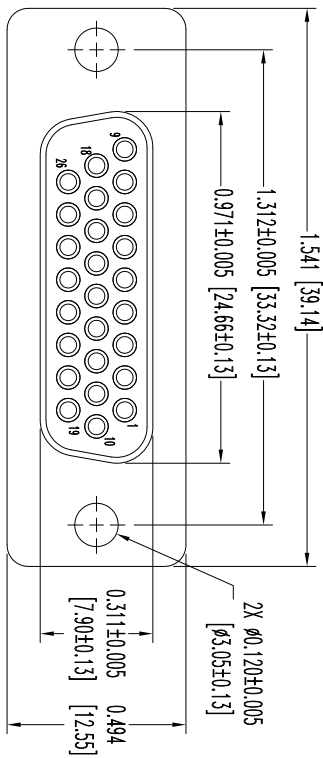


THIS DRAWING CONTAINS INFORMATION PROPRIETARY TO POSITRONIC AND ITS SUBSIDIARIES. POSITRONIC BELIEVES THE DATA ON THIS DRAWING TO BE RELIABLE, SINCE THE USER HAS TAKEN THE NECESSARY PRECAUTIONS TO VERIFY THE DATA. POSITRONIC ASSUMES NO RESPONSIBILITY FOR RESULTS OBTAINED OR DAMAGES INCURRED FROM USE OF SUCH INFORMATION IN WHOLE OR IN PART.

| DATE  | REV | REVISION RECORD | APP  | DR | CK   |
|-------|-----|-----------------|------|----|------|
| 10-25 | NC  | ECO 34631       | COLF | BE | COLF |
| 6-11  | A   | ECO 39758       | COLF | BE | COLF |
| 13    |     |                 |      |    |      |
|       |     |                 |      |    |      |

SK12763



- NOTES:
1. MATERIALS AND FINISHES:  
INSULATOR: GLASS FILED POLYESTER PER ASTM-D5927, UL 94V-0, COLOR: BLUE.  
SHELLS: STEEL, ZINC PLATE WITH CHROMATE SEAL.
  2. DETAILED PRODUCT, MECHANICAL, AND ELECTRICAL INFORMATION IS AVAILABLE IN THE LATEST HIGH DENSITY D-SUB PRODUCT PUBLICATION. VISIT [CONNECTPOSITRONIC.COM/PRODUCTS/59/HIGHDENSITY-SUBMINIATURE](http://CONNECTPOSITRONIC.COM/PRODUCTS/59/HIGHDENSITY-SUBMINIATURE) OR [CONNECTPOSITRONIC.COM](http://CONNECTPOSITRONIC.COM).
  3. CONNECTORS ARE COMPLAINT TO THE CURRENT ROHS DIRECTIVE.
  4. DIMENSIONS ARE IN INCHES [MILLIMETERS].



**POSITRONIC INDUSTRIES INC.**  
www.connectpositronic.com

FSCM 28198

|                |             |          |
|----------------|-------------|----------|
| DECIMAL TOL.   | SCALE       | DRAWN BY |
| ± 0.015 [0.38] | N.T.S.      | B. EVANS |
| ANGULAR TOL.   | APPROVED BY | COLF     |
| ± 5°           |             |          |

|            |               |
|------------|---------------|
| DD SPRINGS | DD26S00000/AA |
|------------|---------------|

|          |                |      |
|----------|----------------|------|
| DATE     | DRAWING NUMBER | REV. |
| 10-25-11 | SK12763        | A    |