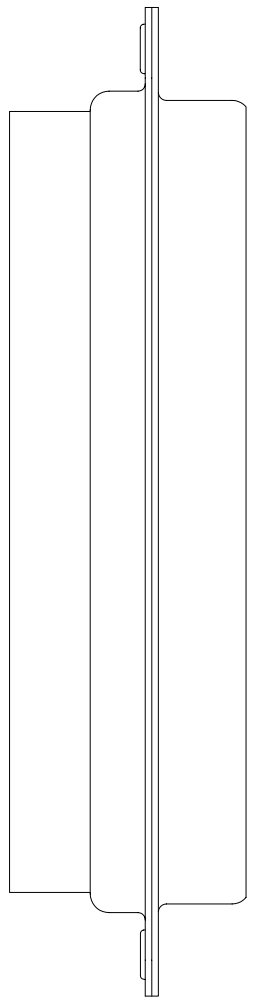
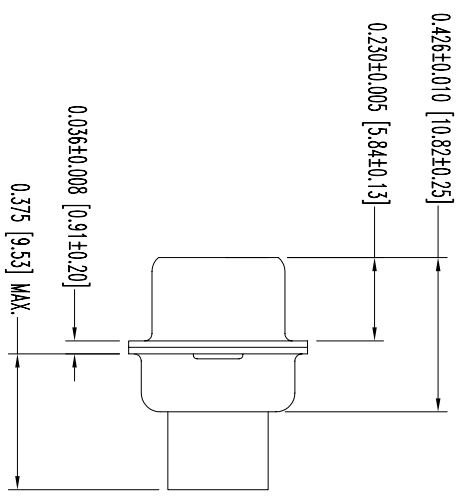
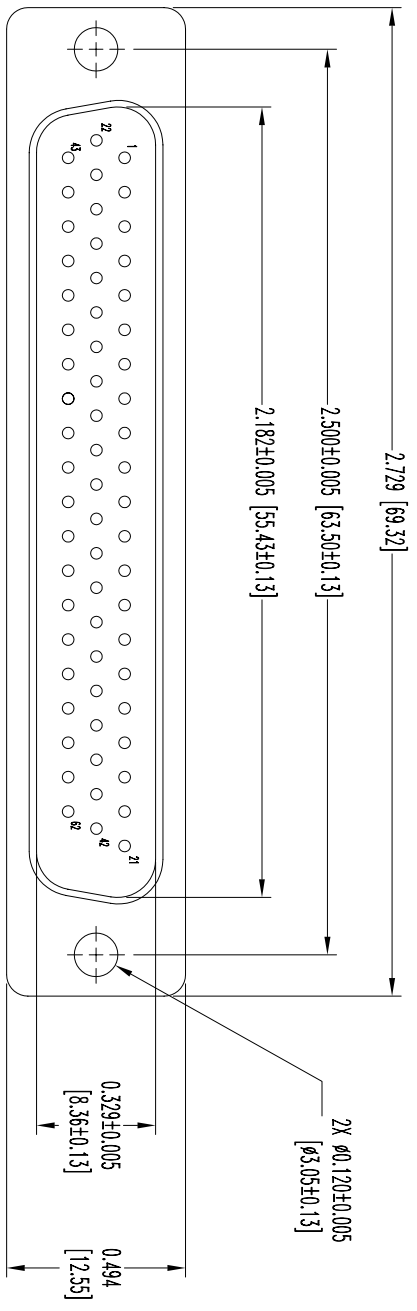


THIS DRAWING CONTAINS INFORMATION PROPRIETARY TO POSITRONIC AND ITS SUBSIDIARIES. POSITRONIC BELIEVES THE DATA ON THIS DRAWING TO BE RELIABLE, SINCE THE USER HAS AGREED TO USE IT AS A BASIS FOR DESIGN, CONSTRUCTION AND RISK. POSITRONIC ASSUMES NO RESPONSIBILITY FOR RESULTS OBTAINED OR DAMAGES INCURRED FROM USE OF SUCH INFORMATION IN WHOLE OR IN PART.



NOTES:

1. MATERIALS AND FINISHES:
 INSULATOR: GLASS FILLED POLYESTER PER MIL-M-24519, UL 94V-0, COLOR BLUE.
 SHELLS: STEEL, TIN PLATE.
2. ELECTRICAL CHARACTERISTICS:
 INSULATION RESISTANCE: 5 G OHMS.
 WORKING VOLTAGE: 300 V r.m.s.
3. TEMPERATURE RANGE: -55°C TO +125°C.
4. CONNECTORS ARE ROHS COMPLIANT PER ROHS DIRECTIVE 2002/95/EC OF 27 JAN 2003.
5. DIMENSIONS ARE IN INCHES [MILLIMETERS].

DATE	REV	REVISION RECORD	APP	DR	OK
1-21-08	NC	ECO 28888	RCW	YK	TK

SK9196

		POSITRONIC INDUSTRIES INC. www.connectpositronic.com		FSCM 28198	
		DD SPRERS	SCALE N.T.S.	DRAWN BY YK	
DECIMAL TOL. ± 0.015 [0.38]	TITLE DD62M0000X/AA		APPROVED BY RCW		
ANGULAR TOL. ± 5°	DATE 1-21-08	DRAWING NUMBER SK9196			REV. NC