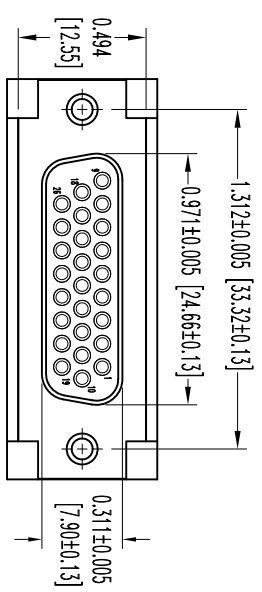
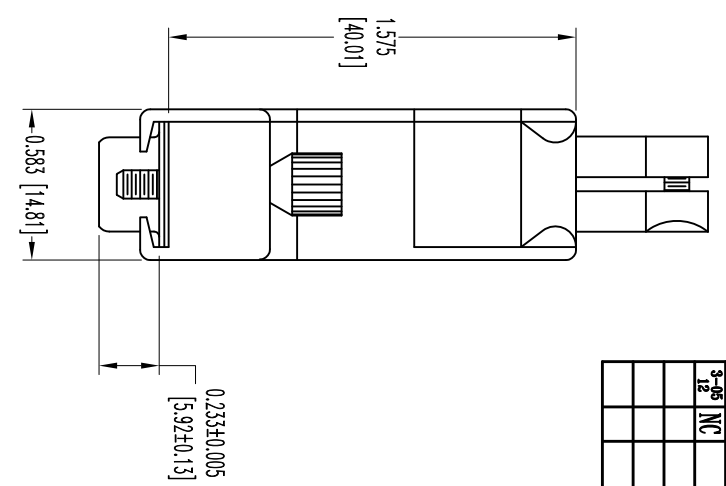
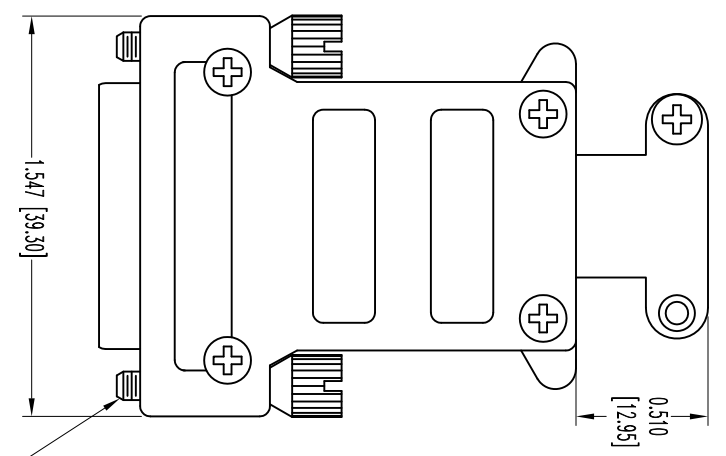


THIS DRAWING CONTAINS INFORMATION PROPRIETARY TO POSITRONIC INDUSTRIES INC. THE DATA ON THIS DRAWING TO BE RELIABLE SINCE THE USER EMPLOYS SUCH INFORMATION AT HIS OWN DISCRETION. RESULTS OBTAINED OR DAMAGES INCURRED FROM USE OF SUCH INFORMATION IN WHOLE OR IN PART.



NOTES:

1. MATERIALS AND FINISHES:
 INSULATOR: GLASS FILLED POLYESTER PER ASTM-D5927, UL 94V-0, COLOR: BLUE.
 SHELLS: STEEL, ZINC PLATE WITH CHROMATE SEAL.
 HOOD AND CABLE CLAMPS: DIE CAST ZINC.
 JACKSCREWS: STEEL WITH NICKEL PLATE.
 SCREWS: STEEL WITH NICKEL PLATE.
2. DETAILED PRODUCT, MECHANICAL, AND ELECTRICAL INFORMATION IS AVAILABLE IN THE LATEST HIGH DENSITY D-SUB PRODUCT PUBLICATION. VISIT CONNECTPOSITRONIC.COM/PRODUCTS/59/HIGHDENSITYD-SUBMINIATURE-OR-CONNECTPOSITRONIC.COM.
3. DIMENSIONS ARE IN INCHES [MILLIMETERS].

| DATE | REV | REVISION RECORD | APP | DR | CK |
|------|-----|-----------------|------|----|------|
| 3-05 | NC | ECO 35323 | COLL | BS | COLL |
| | | | | | |
| | | | | | |

SK13863

POSITRONIC INDUSTRIES INC.
www.connectpositronic.com
 FSC# 28198

| | | | | | | | |
|----------------------|--------------------------------|-----------|-----------------|-----------------------|-----------------|---------------------------|------------|
| ANGULAR TOL. ± 5° | DECIMAL TOL. ± 0.015 [0.38] | DD SERIES | SCALE N.T.S. | DRAWN BY B SHELLBY | DATE 3-05-12 | DRAWING NUMBER SK13863 | REV. NC |
| | | | | APPROVED BY COLL | | | |
| | | | | | | | |