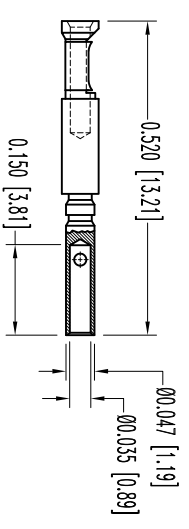
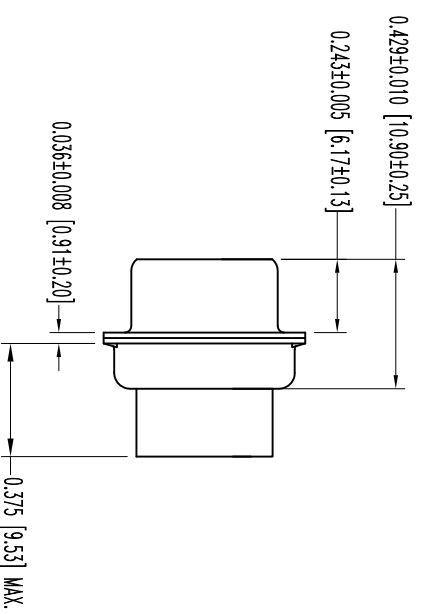
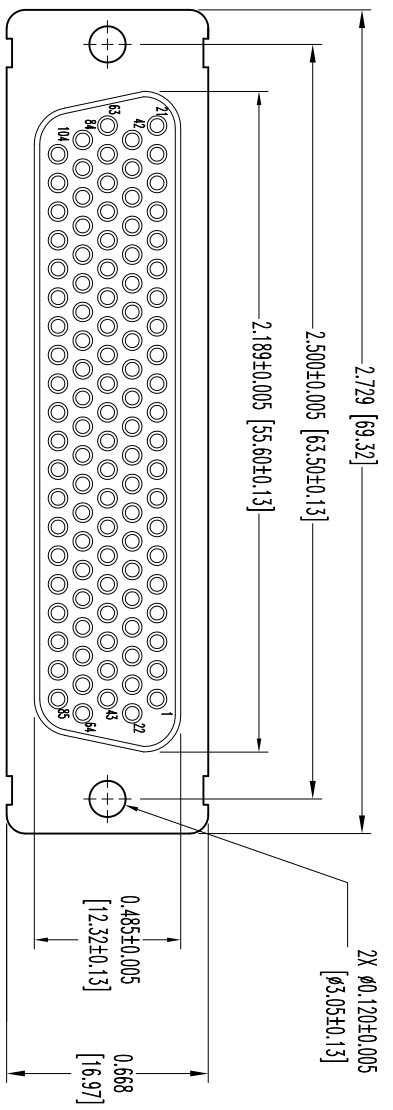


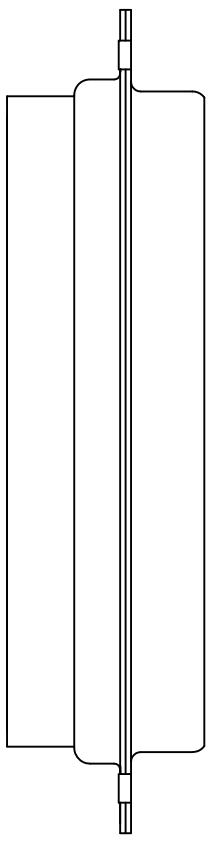
THIS DRAWING CONTAINS INFORMATION PROPRIETARY TO POSITRONIC INDUSTRIES INC. THE DATA ON THIS DRAWING TO BE RELIABLE SINCE THE TECHNICAL INFORMATION IS GIVEN FREE OF CHARGE. THE USER BURS OVS SUCH INFORMATION AT HIS OWN DISCRETION. RESULTS OBTAINED OR DAMAGES INCURRED FROM USE OF SUCH INFORMATION IN WHOLE OR IN PART.

SK13439

DATE	REV	REVISION RECORD	APP	DR	CK
1-13	NC	ECO 35004	COLB	BS	COLB



104X FEMALE CONTACT
ENLARGED



NOTES:

1. MATERIALS AND FINISHES:
INSULATOR: GLASS FILLED PESTER PER ASTM-D5927, UL 94V-0, COLOR: BLUE.
CONTACTS: PRECISION MACHINED COPPER ALLOY WITH BERYLLIUM COPPER CLIP, GOLD FLASH OVER NICKEL PLATE.
SHELLS: STEEL WITH TIN PLATE.
2. DETAILED PRODUCT, MECHANICAL, AND ELECTRICAL INFORMATION IS AVAILABLE IN THE LATEST HIGH DENSITY D-SUB PRODUCT PUBLICATION. VISIT CONNECTPOSITRONIC.COM/PRODUCTS/59/HIGHDENSITYD-SUBMINIATURE OR CONNECTPOSITRONIC.COM.
3. DIMENSIONS ARE IN INCHES [MILLIMETERS].



POSITRONIC INDUSTRIES INC.
www.connectpositronic.com
FSC# 28198

DECIMAL TOL.	± 0.015 [0.38]	ANGULAR TOL.	± 5°
TITLE	DD SERIES	SCALE	N.T.S.
DRAWING NUMBER	DD104S1000X	DRAWN BY	B SHELLADY
DATE	1-13-12	APPROVED BY	COLB

DRAWING NUMBER	SK13439	REV.	NC
----------------	---------	------	----