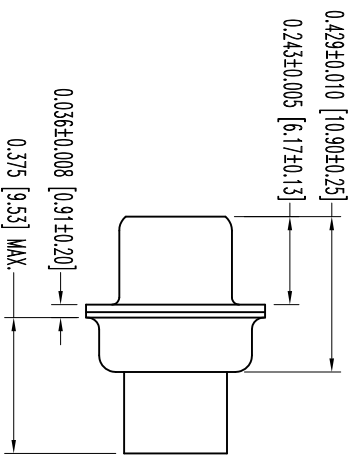
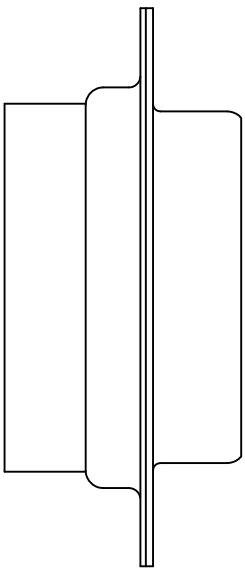
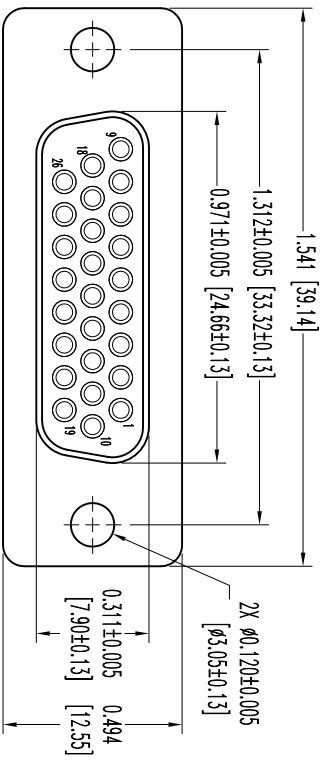





THIS DRAWING CONTAINS INFORMATION PROPRIETARY TO POSITRONIC INDUSTRIES INC. THE DATA ON THIS DRAWING TO BE RELIABLE SINCE THE USER EMPLOYS SUCH INFORMATION AT HIS OWN DISCRETION. POSITRONIC INDUSTRIES INC. ASSUMES NO LIABILITY FOR RESULTS OBTAINED OR DAMAGES INCURRED FROM USE OF SUCH INFORMATION IN WHOLE OR IN PART.



- NOTES:
1. MATERIALS AND FINISHES:
INSULATOR: GLASS FILLED POLYESTER PER ASTM-D5927, UL 94V-0, COLOR: BLUE.
 2. DETAILED PRODUCT, MECHANICAL, AND ELECTRICAL INFORMATION IS AVAILABLE IN THE LATEST HIGH DENSITY D-SUB PRODUCT PUBLICATION: VISIT CONNECTPOSITRONIC.COM/PRODUCTS/59/HIGHDENSITY-SUBMINIATURE-OR-CONNECTPOSITRONIC.COM.
 3. DIMENSIONS ARE IN INCHES [MILLIMETERS].

DATE	REV	REVISION RECORD	APP	DR	CK
7-25	NC	ECO 34298	COLL	BS	COLL

SK12508

 POSITRONIC INDUSTRIES INC. www.connectpositronic.com		DATE	DRAWING NUMBER	REV.
		7-25-11	SK12508	NC
 DECIMAL TOL. ± 0.015 [0.38]		TITLE	SCALE	DRAWN BY
 ANGULAR TOL. $\pm 5^\circ$		DD SERIES	N.T.S.	B SHELLADY
		DD26S000000	APPROVED BY	COLL
			FSC# 28198	