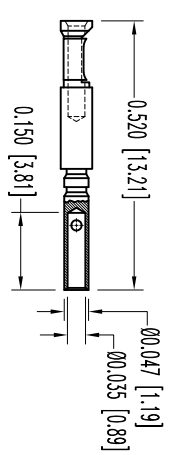
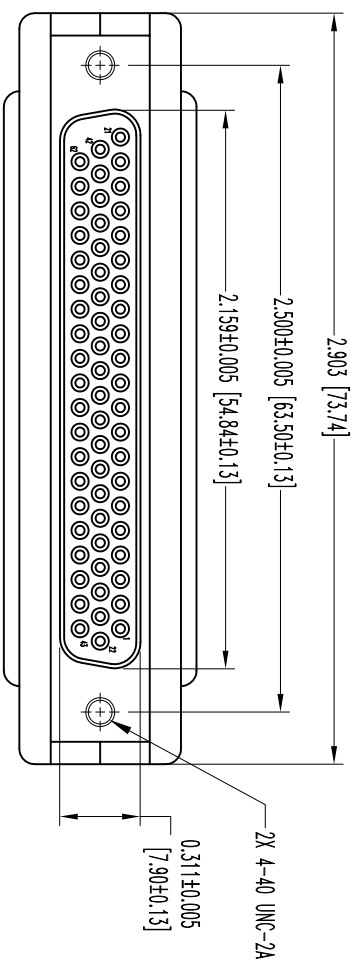
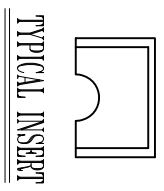
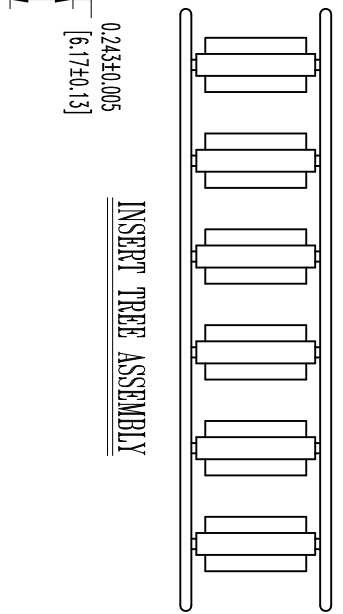
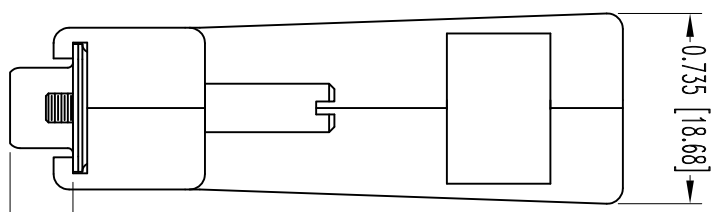
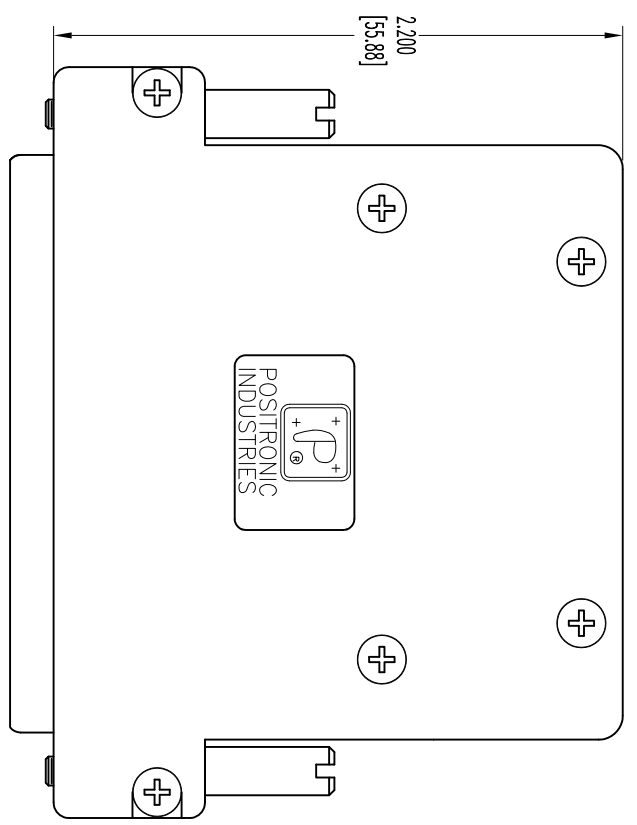


THIS DRAWING CONTAINS INFORMATION PROPRIETARY TO THE DATA ON THIS DRAWING TO BE RELEASED SINCE THE TECHNICAL INFORMATION IS GIVEN FREE OF CHARGE. THE USER EMPLOYS SUCH INFORMATION AT HIS OWN DISCRETION AND ASSUMES ALL LIABILITY FOR ANY DAMAGE TO HIS RESULTS OBTAINED OR DAMAGES INCURRED FROM USE OF SUCH INFORMATION IN WHOLE OR IN PART.



FEMALE CONTACT
62X (ENLARGED)

NOTES:
1. MATERIALS AND FINISHES:

INSULATOR: GLASS FILLED POLYESTER PER ASTM D5927, UL 94V-0, BLUE COLOR.

CONTACTS: BRASS, GOLD FLASH OVER NICKEL FINISH.

SHELLS: STEEL, TIN PLATE.

HOOD: COMPOSITE, CONDUCTIVE VOLUME RESISTIVITY (1.0 OHM-cm MAX.), UL94V-0, ATTENUATION: 40+ DECIBELS.

JACKSCREWS: STEEL, ZINC PLATE WITH CHROMATE SEAL.

SCREWS: STAINLESS STEEL, PASSIVATED.

2. DETAILED PRODUCT, ELECTRICAL, AND MECHANICAL INFORMATION IS AVAILABLE IN THE LATEST HIGH DENSITY D-SUB PRODUCT PUBLICATION. VISIT CONNECTPOSITRONIC.COM/PRODUCTS/59/HIGHDENSITY-D-SUBMINIATURE OR CONNECTPOSITRONIC.COM.

3. DIMENSIONS ARE IN INCHES [MILLIMETERS].

DATE	REV	REVISION RECORD	APP	DR	CK
7-15	NC	ECO 34241	COL	ME	COL

SK12472



POSITRONIC INDUSTRIES INC.
www.connectpositronic.com

FSC# 28198

DECIMAL TOL. ± 0.015 [0.38]	ANGULAR TOL. ± 5°	DATE 7-15-11	DRAWING NUMBER SK12472	REV. NC
DD SERIES		SCALE N.T.S.		DRAWN BY ME
TITLE DD62S10ZOX		APPROVED BY COL		