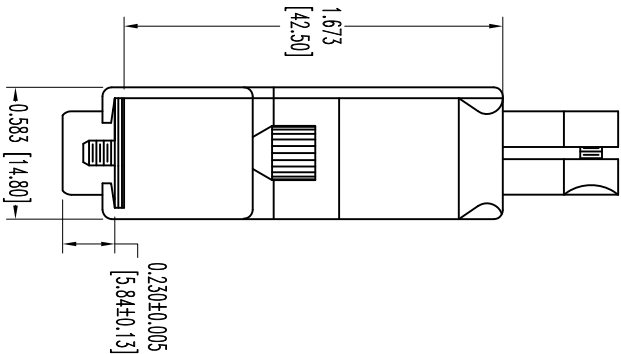
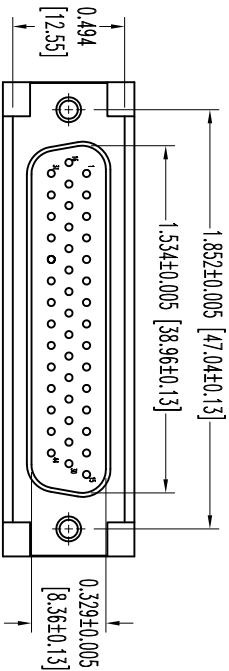
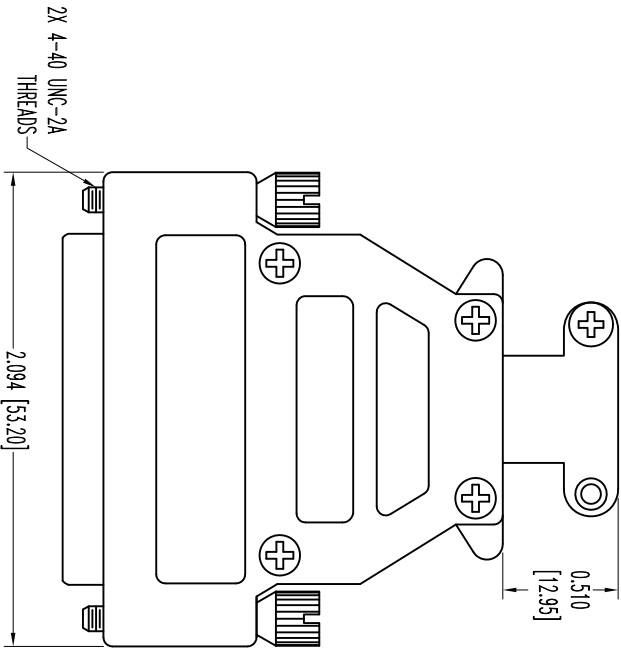



THIS DRAWING CONTAINS INFORMATION PROPRIETARY TO CONNECT POSITRONIC, INC. AND IS NOT TO BE REPRODUCED OR TRANSMITTED IN ANY FORM OR BY ANY MEANS, ELECTRONIC OR MECHANICAL, INCLUDING PHOTOCOPYING, RECORDING, OR BY ANY INFORMATION STORAGE AND RETRIEVAL SYSTEM. THE DATA ON THIS DRAWING TO BE RELIABLE. SINCE THE USER EMPLOYS SUCH INFORMATION AT HIS OWN DISCRETION, CONNECT POSITRONIC, INC. ASSUMES NO LIABILITY FOR RESULTS OBTAINED OR DAMAGES INCURRED FROM USE OF SUCH INFORMATION IN WHOLE OR IN PART.



- NOTES:
1. MATERIALS AND FINISHES:
INSULATOR: GLASS FILLED POLYESTER PER ASTM-D5927, UL 94V-0, COLOR: BLUE.
SHELLS: STEEL, ZINC PLATE WITH CHROMATE SEAL.
HOOD AND CABLE CLAMPS: DIE CAST ZINC.
JACKSCREWS: STEEL WITH NICKEL PLATE.
 2. DETAILED PRODUCT, MECHANICAL, AND ELECTRICAL INFORMATION IS AVAILABLE IN THE LATEST HIGH DENSITY D-SUB PRODUCT PUBLICATION. VISIT CONNECTPOSITRONIC.COM/PRODUCTS/59/HIGHDENSITY-SUBMINIATURE-OR-CONNECTPOSITRONIC.COM.
 3. DIMENSIONS ARE IN INCHES [MILLIMETERS].

DATE	REV	REVISION RECORD	APP	DR	CK
6-22-11	NC	ECO 34177	COLE	BS	COLE



POSITRONIC INDUSTRIES INC.
www.connectpositronic.com

DECIMAL TOL.	± 0.015 [0.38]
ANGULAR TOL.	± 5°

TITLE	DD SERIES	SCALE	N.T.S.	DRAWN BY	B SHELLBY	APPROVED BY	COLE
DATE	6-22-11	DRAWING NUMBER	SK12431	REV.	NC		