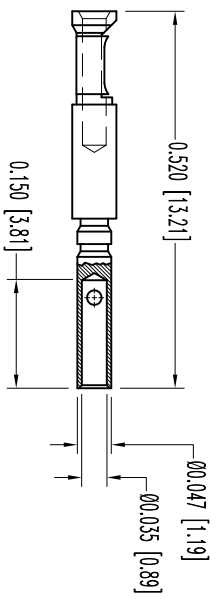
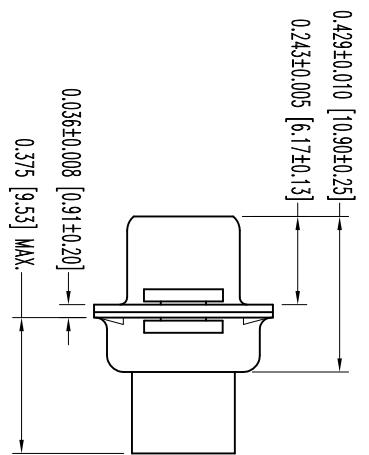
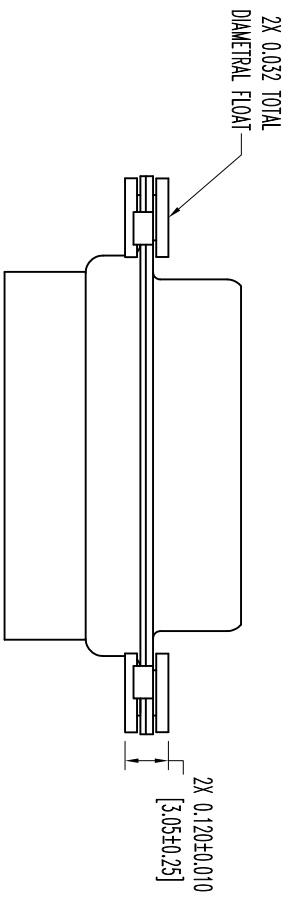
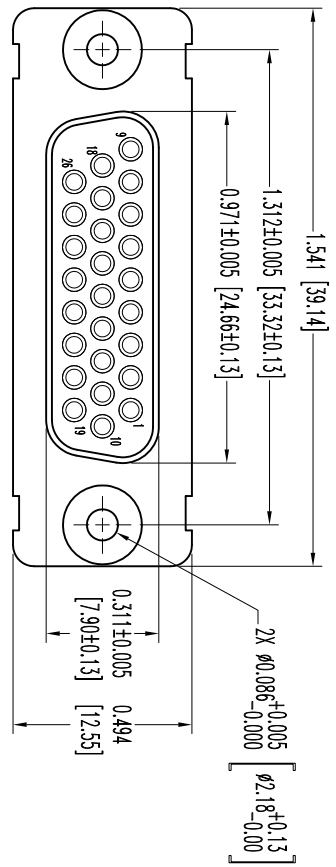


THIS DRAWING CONTAINS INFORMATION PROPRIETARY TO POSITRONIC INDUSTRIES INC. THE DATA ON THIS DRAWING TO BE RELIABLE SINCE THE USER EMPLOY'S SUCH INFORMATION AT HIS OWN DISCRETION RESULTS OBTAINED OR DAMAGES INCURRED FROM USE OF SUCH INFORMATION IN WHOLE OR IN PART.

SK12426

DATE	REV	REVISION RECORD	APP	DR	CK
6-20	NC	ECO 34168	COLL	BS	COLL



26X FEMALE CONTACT
ENLARGED

NOTES:

1. MATERIALS AND FINISHES:

INSULATOR: GLASS FILLED POLYESTER PER ASTM-D5927. UL 94V-0. COLOR: BLUE.

CONTACTS: PRECISION MACHINED COPPER ALLOY. GOLD FLASH OVER NICKEL PLATE.

SHELLS: STEEL. ZINC PLATE WITH CHROMATE SEAL.

FLOAT BUSHINGS: BRASS. ZINC PLATE WITH CHROMATE SEAL.

2. DETAILED PRODUCT, MECHANICAL, AND ELECTRICAL INFORMATION IS AVAILABLE IN THE LATEST HIGH DENSITY D-SUBMINIATURE PRODUCT PUBLICATION. VISIT CONNECTPOSITRONIC.COM/PRODUCTS/59/HIGHDENSITYD-SUBMINIATURE OR CONNECTPOSITRONIC.COM.

3. DIMENSIONS ARE IN INCHES [MILLIMETERS].



POSITRONIC INDUSTRIES INC.
www.connectpositronic.com

FSC# 28198

DECIMAL TOL. ± 0.015 [0.38]	ANGULAR TOL. ± 5°	DD SERIES	SCALE N.T.S.	DRAWN BY B SHELLADY	APPROVED BY COLL	DATE 6-20-11	DRAWING NUMBER SK12426	REV. NC
TITLE DD26S1F000								