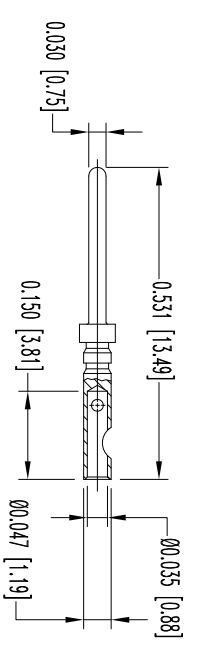
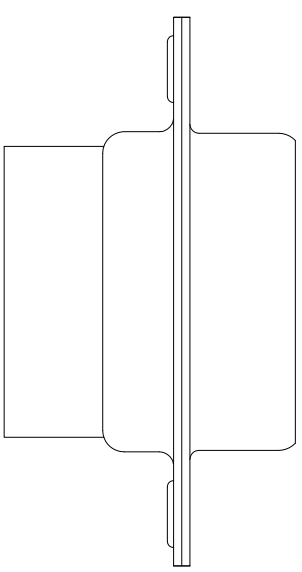
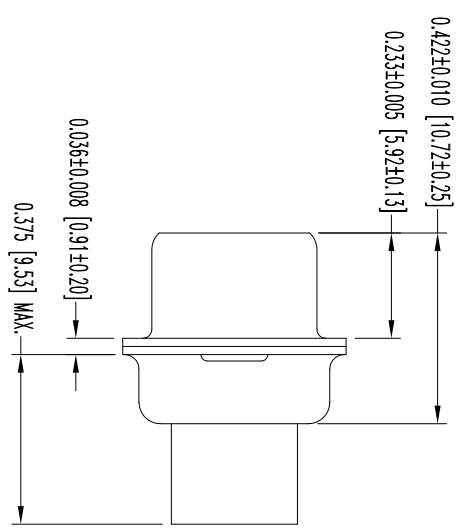
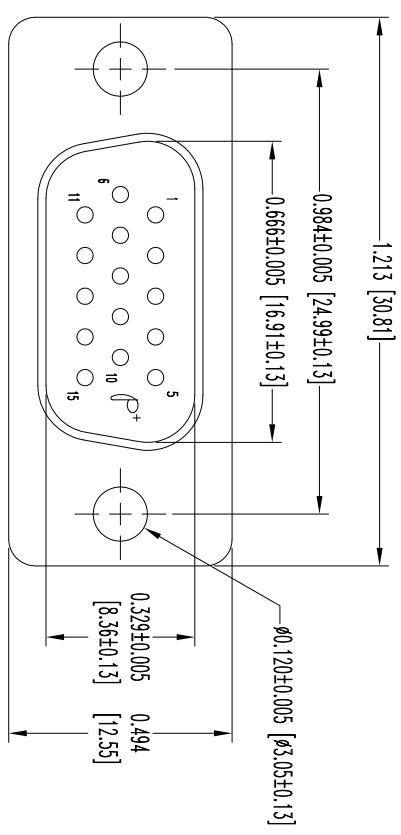


THIS DRAWING CONTAINS INFORMATION PROPRIETARY TO POSITRONIC AND ITS SUBSIDIARIES. POSITRONIC BELIEVES THAT THE INFORMATION CONTAINED HEREIN IS UNPUBLISHED TECHNICAL INFORMATION AND IS GIVEN FREE OF CHARGE. THE USER EMPLOYER'S SUCH INFORMATION AT HIS OWN DISCRETION. POSITRONIC ASSUMES NO LIABILITY FOR THE LOSS OF SUCH INFORMATION IN WHOLE OR IN PART.

SK14811

DATE	REV	REVISION/RECORD	APP	DR	CK
1-09	NC	ECO 38128	COLE	BS	COLE



15X MALE CONTACT  
ENLARGED

NOTES:  
 1. MATERIALS AND FINISHES:  
 INSULATOR: GLASS FILLED POLYESTER PER ASTM-D5927, UL 94V-0, COLOR: BLUE.  
 SHELLS: STEEL, ZINC PLATE WITH CHROMATE SEAL.  
 CONTACTS: PRECISION MACHINED COPPER ALLOY, GOLD FLASH OVER NICKEL PLATE.  
 2. DETAILED PRODUCT, MECHANICAL, AND ELECTRICAL INFORMATION IS AVAILABLE IN THE LATEST HIGH DENSITY D-SUB PRODUCT PUBLICATION. VISIT [CONNECTPOSITRONIC.COM/PRODUCTS/59/HIGHDENSITY-SUBMINIATURE](http://CONNECTPOSITRONIC.COM/PRODUCTS/59/HIGHDENSITY-SUBMINIATURE) OR [CONNECTPOSITRONIC.COM](http://CONNECTPOSITRONIC.COM).  
 3. DIMENSIONS ARE IN INCHES [MILLIMETERS].



**POSITRONIC INDUSTRIES INC.**  
[www.connectpositronic.com](http://www.connectpositronic.com)  
 PSC# 28198

DECIMAL TOL. ± 0.015 [0.38]	DD SERIES	SCALE N.T.S.	DRAWN BY B SHELLBY
ANGULAR TOL. ± 5°	DD15M20000	APPROVED BY COLE	DATE 1-09-13
			DRAWING NUMBER SK14811
			REV. NC