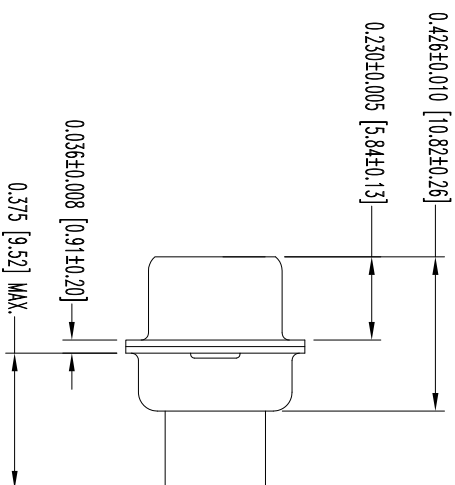
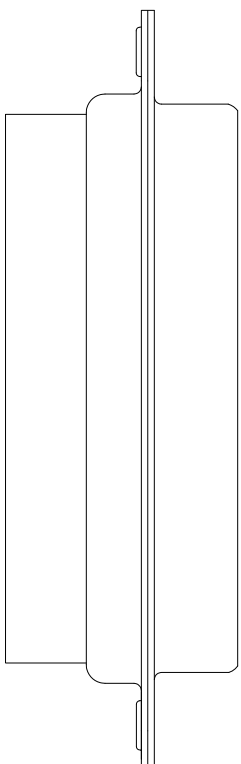
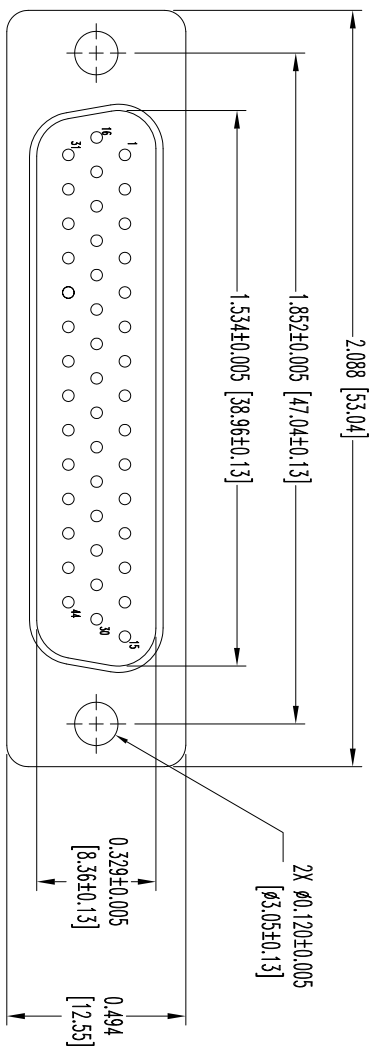


THIS DRAWING CONTAINS INFORMATION PROPRIETARY TO POSITRONIC AND ITS SUBSIDIARIES. POSITRONIC BELIEVES THE DATA ON THIS DRAWING TO BE RELIABLE, SINCE THE USER HAS NOTIFIED POSITRONIC OF ANY DISCREPANCY. POSITRONIC ASSUMES NO RESPONSIBILITY FOR RESULTS OBTAINED OR DAMAGES INCURRED FROM USE OF SUCH INFORMATION IN WHOLE OR IN PART.



- NOTES:
1. MATERIALS AND FINISHES:
INSULATOR: GLASS FILLED POLYESTER PER ASTM D5927, UL 94V-0, COLOR BLUE.
SHELLS: STEEL, ZINC PLATE WITH CHROMATE SEAL.
 2. DETAILED PRODUCT MECHANICAL AND ELECTRICAL INFORMATION IS AVAILABLE IN THE LATEST HIGH DENSITY D-SUB PRODUCT PUBLICATION. VISIT CONNECTPOSITRONIC.COM/PRODUCTS/59/HIGHDENSITYD-SUBMINIATURE OR CONNECTPOSITRONIC.COM
 3. CONNECTORS ARE COMPLIANT TO THE CURRENT ROHS DIRECTIVE.
 4. DIMENSIONS ARE IN INCHES [MILLIMETERS].

DATE	REV	REVISION/RECORD	APP	DR	CK
10-25	NC	ECO 34633	COLF	LO	COLF
6-11	A	ECO 39759	COLF	BE	COLF
13					

SK12772



POSITRONIC INDUSTRIES INC.
www.connectpositronic.com

FSCM 28198

DECIMAL TOL.	SCALE	DRAWN BY
± 0.015 [0.38]	N.T.S.	L. OMENS
	APPROVED BY	COLF

TITLE	DD SERIES
DD44M00000/AA	

DATE	DRAWING NUMBER	REV.
10-25-11	SK12772	A

ANGULAR TOL.
± 5°