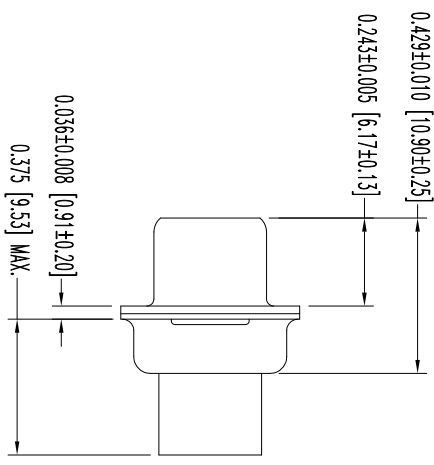
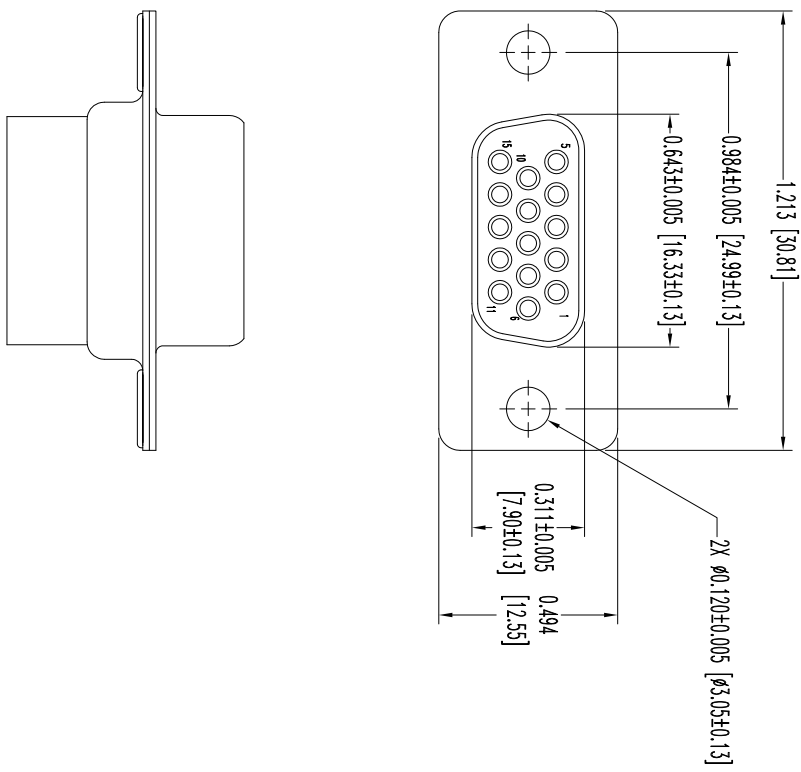



THIS DRAWING CONTAINS INFORMATION PROPRIETARY TO POSITRONIC AND ITS SUBSIDIARIES. POSITRONIC BELIEVES THE DATA ON THIS DRAWING TO BE RELIABLE. SINCE THE INFORMATION ON THIS DRAWING IS BASED ON THE BEST AVAILABLE INFORMATION, POSITRONIC ASSUMES NO RESPONSIBILITY FOR RESULTS OBTAINED OR DAMAGES INCURRED FROM USE OF SUCH INFORMATION IN WHOLE OR IN PART.



- NOTES:
1. MATERIALS AND FINISHES:
INSULATOR: GLASS FILLED POLYESTER PER ASTM D5927, UL 94V-0, BLUE COLOR.
SHELLS: STEEL, ZINC PLATE WITH CHROMATE SEAL.
 2. DETAILED PRODUCT, MECHANICAL AND ELECTRICAL INFORMATION IS AVAILABLE IN THE LATEST HIGH DENSITY D-SUB PRODUCT PUBLICATION. VISIT CONNECTPOSITRONIC.COM/PRODUCTS/59/HIGHDENSITY-D-SUBMINIATURE OR CONNECTPOSITRONIC.COM.
 3. CONNECTORS ARE COMPLIANT TO THE CURRENT ROHS DIRECTIVE.
 4. DIMENSIONS ARE IN INCHES [MILLIMETERS].

| DATE | REV | REVISION/RECORD | APP | DR | CK |
|----------|-----|-----------------|------|----|------|
| 10-25-11 | NC | ECO 34633 | COLF | LD | COLF |
| 6-11-13 | A | ECO 39758 | COLF | BE | COLF |
| | | | | | |
| | | | | | |

SK12769

| | | | | | |
|--|--|----------------|--|----------|--|
|  <p>POSITRONIC INDUSTRIES INC. www.connectpositronic.com</p> | | SCALE | | DRAWN BY | |
| | | N.T.S. | | I. OMENS | |
| DD SERIES | | APPROVED BY | | COLF | |
| TITLE | | DD15S00000/AA | | | |
| DATE | | 10-25-11 | | | |
| DRAWING NUMBER | | SK12769 | | | |
| ANGULAR TOL. | | ± 5° | | | |
| DECIMAL TOL. | | ± 0.015 [0.38] | | | |
| FSCM 28198 | | | | | |
| REV. | | A | | | |