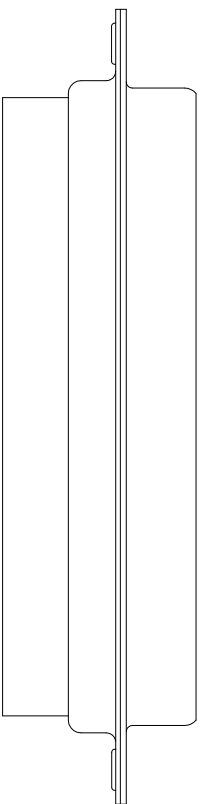
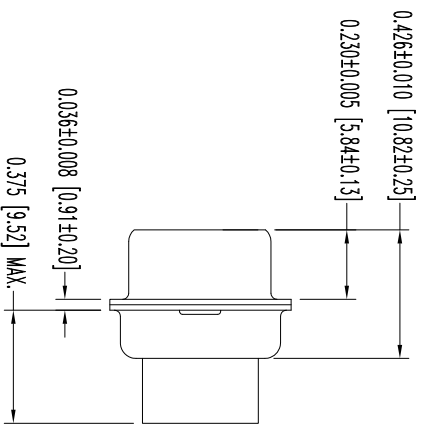
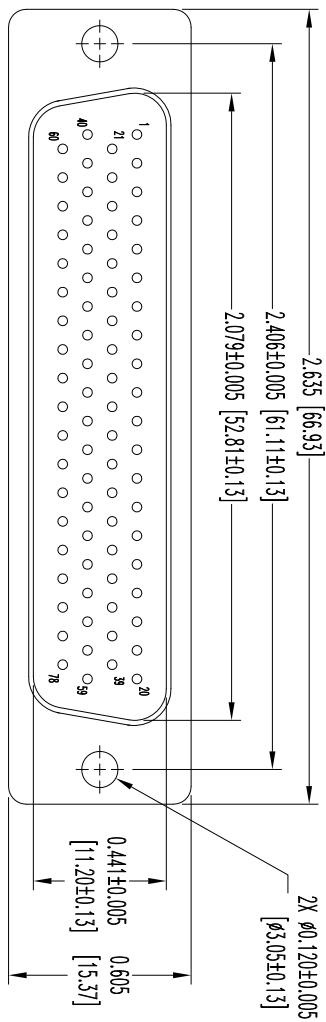


POSITRONIC INDUSTRIES BELIEVES THE DATA ON THIS DRAWING TO BE RELIABLE SINCE THE TECHNICAL INFORMATION IS GIVEN FREE OF CHARGE, THE USER EMPLOYING SUCH INFORMATION AT HIS OWN DISCRETION ASSUMES ALL LIABILITY FOR THE RESULTS AND RESPONSIBILITY FOR RESULTS OBTAINED OR DAMAGES INCURRED FROM USE OF SUCH INFORMATION IN WHOLE OR IN PART.



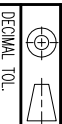
- NOTES:
1. MATERIALS AND FINISHES:
INSULATORS: GLASS FILLED POLYESTER PER ASTM D5927, UL 94V-0, BLUE COLOR.
SHELLS: STEEL, ZINC PLATE WITH CHROMATE SEAL.
 2. DETAILED PRODUCT, ELECTRICAL, AND MECHANICAL INFORMATION IS AVAILABLE IN THE LATEST HIGH DENSITY D-SUBMINIATURE PRODUCT PUBLICATION.
VISIT CONNECTPOSITRONIC.COM/PRODUCTS/59/HIGHDENSITYD-SUBMINIATURE
OR CONNECTPOSITRONIC.COM.
 3. CONNECTORS ARE COMPLIANT TO THE CURRENT ROHS DIRECTIVE.
 4. DIMENSIONS ARE IN INCHES [MILLIMETERS].

DATE	REV	REVISION RECORD	APP	DR	CK
10-25	NC	ECO 34631	COLF	BE	COLF
6-11	A	ECO 39758	COLF	BE	COLF
13					

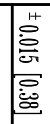
SK12761



POSITRONIC INDUSTRIES INC.
www.connectpositronic.com



DD SERIES
SCALE: N.T.S.
DRAWN BY: B. EVANS
APPROVED BY: COLF



DD78M00000/AA
DATE: 10-25-11
DRAWING NUMBER: SK12761
REV: A