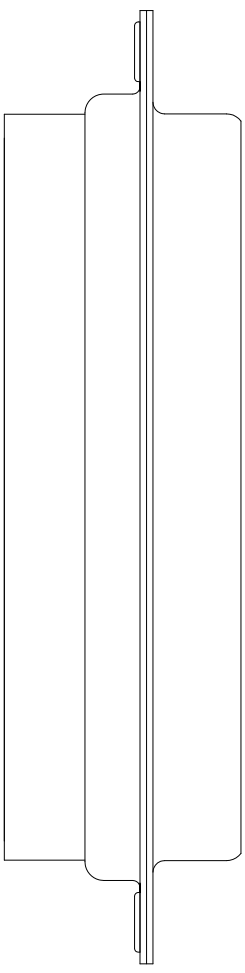
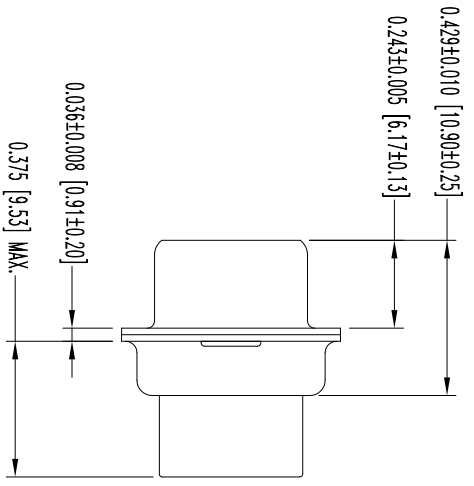
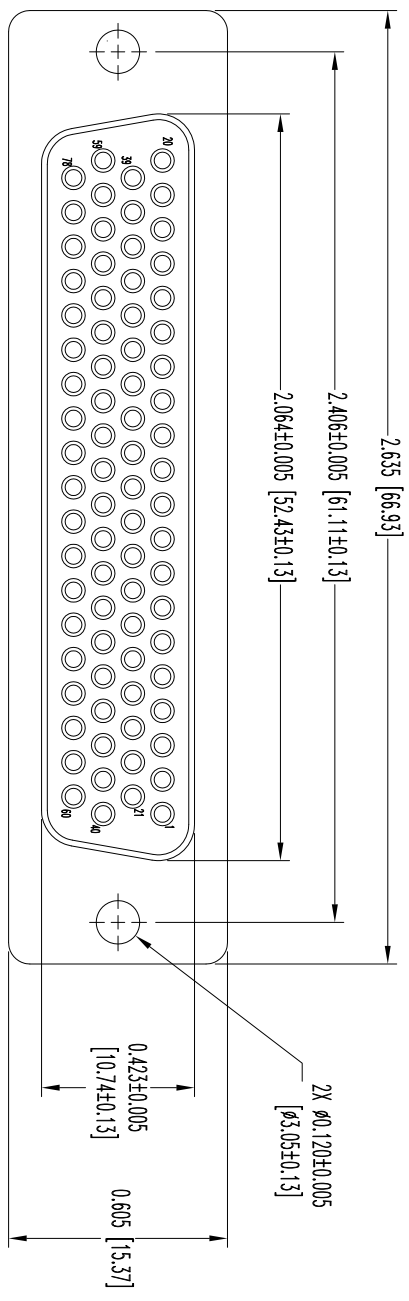


THIS DRAWING CONTAINS INFORMATION PROPRIETARY TO POSITRONIC AND IS SUBJECT TO THE PATENT RIGHTS OF THE COMPANY. THE USER EMPLOY'S SUCH INFORMATION AT HIS OWN DISCRETION. RESULTS OBTAINED OR DAMAGES INCURRED FROM USE OF SUCH INFORMATION IN WHOLE OR IN PART.



DATE	REV	REVISION/RECORD	APP	DR	CK
12-09	NC	ECO 31831	TK	BS	TK
2-17	A	ECO 32121	COLL	BS	COLL
10-27	B	ECO 34638	COLL	TL	COLL
1-8	C	ECO 38115	COLL	BE	COLL

SK11219

POSITRONIC INDUSTRIES INC.
www.connectpositronic.com
 FSCM 28198

DECIMAL TOL. ± 0.015 [0.38]	ANGULAR TOL. ± 5°	DD SERIES	SCALE N.T.S.	DRAWN BY B SHELLARDY	DATE 12-09-09	DRAWING NUMBER SK11219	REV. C
TITLE DD78S00000/AA		APPROVED BY T KEPLER		DATE 12-09-09		DRAWING NUMBER SK11219	

- NOTES:
1. MATERIALS AND FINISHES:
 INSULATOR: GLASS FILLED POLYESTER PER ASTM D5927, UL 94V-0, COLOR: BLUE.
 SHELLS: STEEL, ZINC PLATE WITH CHROMATE SEAL.
 2. DETAILED PRODUCT, MECHANICAL, AND ELECTRICAL INFORMATION IS AVAILABLE IN THE LATEST HIGH DENSITY D-SUB PRODUCT PUBLICATION. VISIT CONNECTPOSITRONIC.COM/PRODUCTS/59/HIGHDENSITYD-SUBMINIATURE OR CONNECTPOSITRONIC.COM
 3. CONNECTOR IS COMPLIANT TO THE CURRENT ROHS DIRECTIVE.
 4. DIMENSIONS ARE IN INCHES [MILLIMETERS].