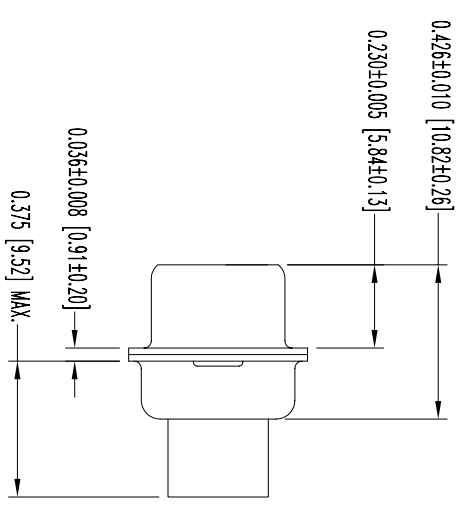
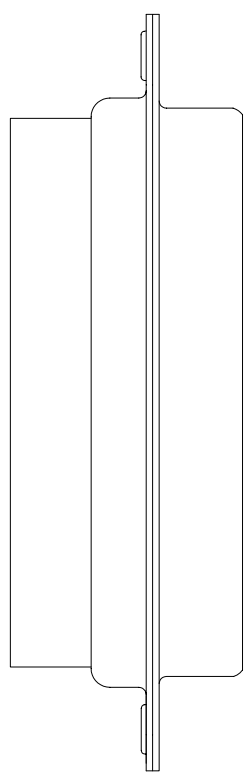
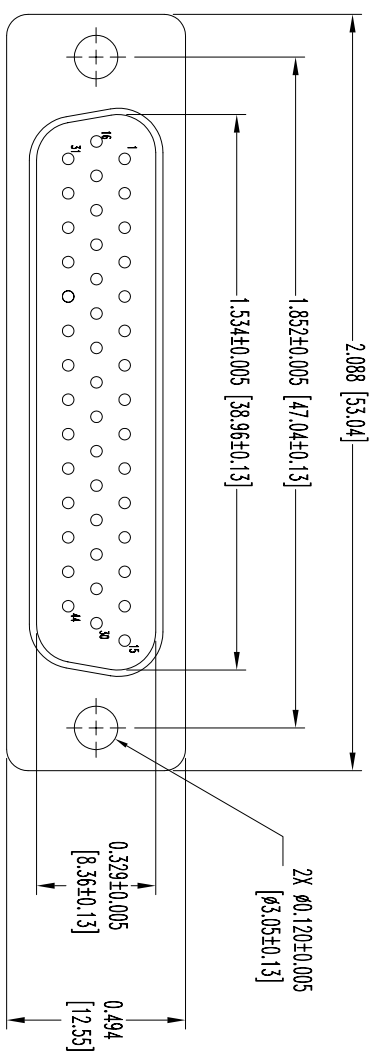


THIS DRAWING CONTAINS INFORMATION PROPRIETARY TO POSITRONIC AND ITS SUBSIDIARIES. POSITRONIC BELIEVES THE DATA ON THIS DRAWING TO BE RELIABLE, SINCE THE USER HAS AGREED TO USE IT AS A BASIS FOR DESIGNATION AND RISK. POSITRONIC ASSUMES NO RESPONSIBILITY FOR RESULTS OBTAINED OR DAMAGES INCURRED FROM USE OF SUCH INFORMATION IN WHOLE OR IN PART.



NOTES:

1. MATERIALS AND FINISHES:
INSULATOR: GLASS FILLED POLYESTER PER MIL-M-24519; UL 94V-0, COLOR BLUE.
SHELLS: STEEL, TIN PLATE.
2. ELECTRICAL CHARACTERISTICS:
INSULATION RESISTANCE: 5 G OHMS.
WORKING VOLTAGE: 300 V r.m.s.
3. TEMPERATURE RANGE: -55°C TO +125°C.
4. CONNECTORS ARE ROHS COMPLIANT PER ROHS DIRECTIVE 2002/95/EC OF 27 JAN 2003.
5. DIMENSIONS ARE IN INCHES [MILLIMETERS].

DATE	REV	REVISION/RECORD	APP	DR	CK
1-21-08	NC	ECO 28888	RCW	YK	TK

SK9194



POSITRONIC INDUSTRIES INC.
www.connectpositronic.com

FSCM 28198

DECIMAL TOL. ± 0.015 [0.38]	SCALE N.T.S.	DRAWN BY YK
ANGULAR TOL. ± 5°	DD SERIES	APPROVED BY RCW
DATE 1-21-08	TITLE DD44M0000X/AA	REV. NC
	DRAWING NUMBER SK9194	