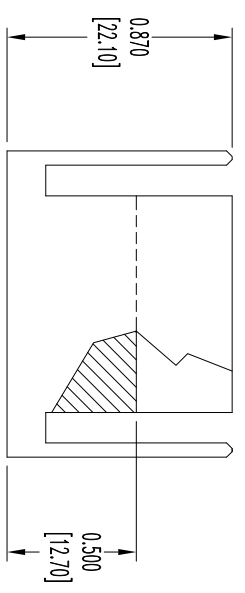
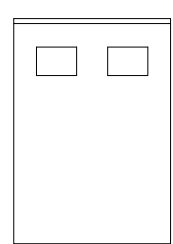
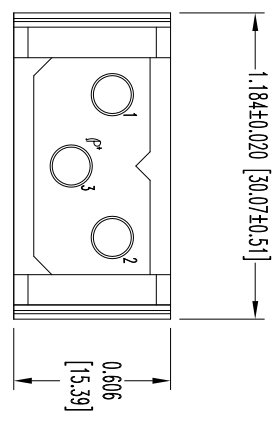



THIS DRAWING CONTAINS INFORMATION PROPRIETARY TO POSITRONIC AND ITS SUBSIDIARIES. POSITRONIC BELIEVES THE DATA ON THIS DRAWING TO BE RELIABLE, SINCE THE USER HAS REVIEWED THE DRAWING AND HAS BEEN ADVISED OF THE LIMITATIONS OF THE DATA. POSITRONIC ASSUMES NO RESPONSIBILITY FOR RESULTS OBTAINED OR DAMAGES INCURRED FROM USE OF SUCH INFORMATION IN WHOLE OR IN PART.

DATE	REV	REVISION RECORD	APP	DR	CK
12-21-12	NC	ECO 38086	TK	LD	TK

SK14758



- NOTES:
1. MATERIALS AND FINISHES:  
INSULATOR: GLASS-FILLED POLYESTER, UL 94V-0. COLOR: BLUE.
  2. DETAILED PRODUCT, MECHANICAL, AND ELECTRICAL INFORMATION IS AVAILABLE IN THE LATEST PCS PRODUCT PUBLICATION. VISIT [CONNECTPOSITRONIC.COM/PRODUCTS/20/POWERCONNECTIONSYSTEMS](http://CONNECTPOSITRONIC.COM/PRODUCTS/20/POWERCONNECTIONSYSTEMS) OR [CONNECTPOSITRONIC.COM](http://CONNECTPOSITRONIC.COM).
  3. CONNECTORS ARE COMPLIANT TO THE CURRENT ROHS DIRECTIVE
  4. DIMENSIONS ARE IN INCHES [MILLIMETERS].

		<b>POSITRONIC INDUSTRIES INC.</b> <a href="http://www.connectpositronic.com">www.connectpositronic.com</a>		<b>POSITIVE CONNECTION SYSTEMS</b> FSCM 28198		
		DECIMAL TOL. $\pm 0.015$ [0.38]	ANGULAR TOL. $\pm 5^\circ$	PCS SERIES N.T.S.	SCALE N.T.S.	DRAWN BY L. OMENS
DATE 12-21-12		DRAWING NUMBER SK14758				REV. NC
TITLE PLB3W3M0000/AA						