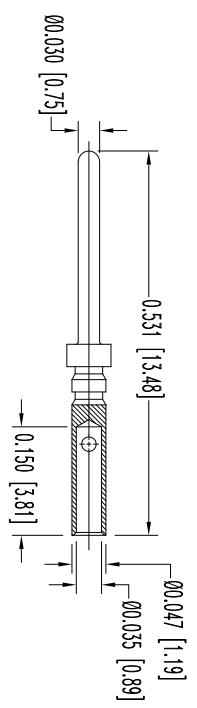
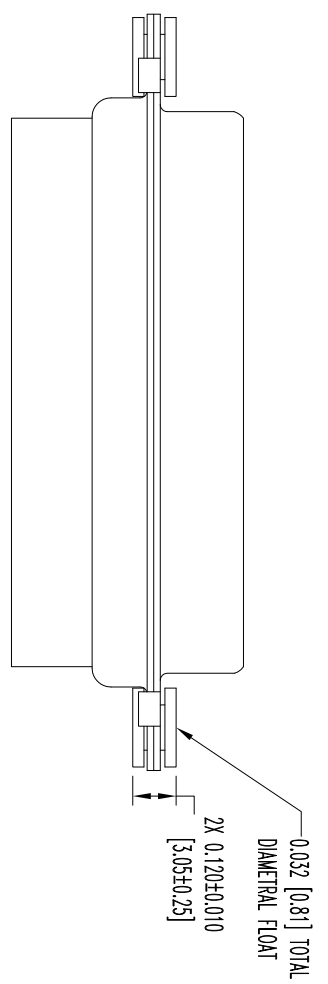
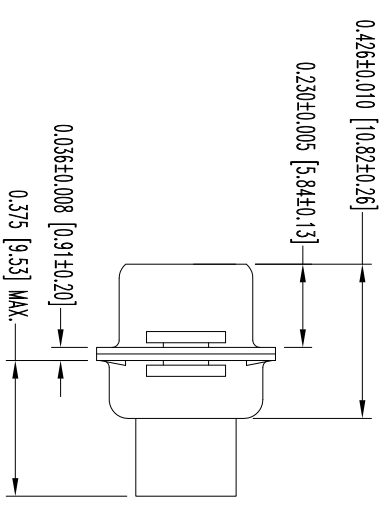
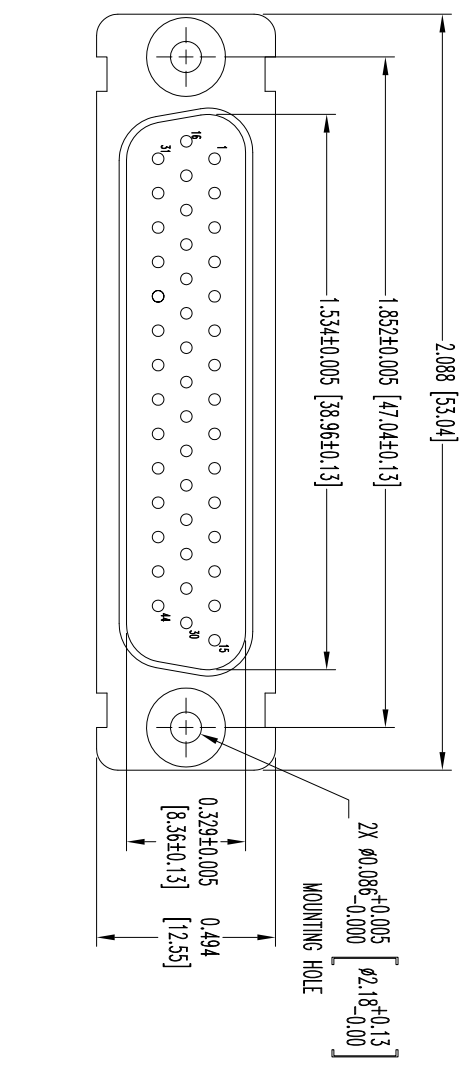


THIS DRAWING CONTAINS INFORMATION PROPRIETARY TO CONNECT POSITRONIC. THE DRAWING IS TO BE RELEASED TO THE USER EMPLOYING SUCH INFORMATION AT HIS OWN DISCRETION. RESULTS OBTAINED OR DAMAGES INCURRED FROM USE OF SUCH INFORMATION IN WHOLE OR IN PART.

SK14244

DATE	REV	REVISION RECORD	APP	DR	CK
7-13	NC	ECO 36283	COLF	BS	COLF



NOTES:

- MATERIALS AND FINISHES:  
INSULATOR: GLASS FILLED POLYESTER PER ASTM-D3927, UL 94V-0, COLOR: BLUE.  
CONTACTS: PRECISION MACHINED COPPER ALLOY, GOLD FLASH OVER NICKEL PLATE.  
SHELLS: STAINLESS STEEL, PASSIVATED.  
FLOAT BUSHINGS: BRASS, ZINC PLATE WITH CHROMATE SEAL.
- DETAILED PRODUCT, MECHANICAL, AND ELECTRICAL INFORMATION IS AVAILABLE IN THE LATEST HIGH DENSITY D-SUB PRODUCT PUBLICATION. VISIT [CONNECTPOSITRONIC.COM/PRODUCTS/59/HIGHDENSITY-D-SUBMINIATURE-OR-CONNECTPOSITRONIC.COM](http://CONNECTPOSITRONIC.COM/PRODUCTS/59/HIGHDENSITY-D-SUBMINIATURE-OR-CONNECTPOSITRONIC.COM).
- DIMENSIONS ARE IN INCHES [MILLIMETERS].

		DATE	DRAWING NUMBER	REV.
		7-17-12	SK14244	NC
<b>POSITRONIC INDUSTRIES INC.</b> <a href="http://www.connectpositronic.com">www.connectpositronic.com</a>		DECIMAL TOL.	SCALE	DRAWN BY
		± 0.015 [0.38]	N.T.S.	B SHELLBY
		ANGULAR TOL.	DD44M1F00S	APPROVED BY
		± 5°	DD44M1F00S	COLF
<b>CONNECT POSITRONIC</b> <a href="http://www.connectpositronic.com">www.connectpositronic.com</a>		TITLE	DD44M1F00S	FSCM 28198
		ODD SERIES	DD44M1F00S	